

2019 - 2020

COPENHAGEN TOURIST

FREE COPY

**EXPLORE
COPENHAGEN**

**SIGHTS &
ATTRACTIONS**

**SHOPPING &
DINING**

**MUSEUMS &
COLLECTIONS**

**TOURIST INFORMATION
& MAPS**

Trips to North Zealand, Funen,
Aarhus, Lund



THE SWISS HOUSE OF WATCHES AND FINE JEWELLERY


ROLEX


CARL F. BUCHERER
LUCERNE 1888

BUCHERER
FINE JEWELLERY


BAUME & MERCIER
MAISON D'HORLOGERIE GENEVE 1830

Cartier

Chopard

GUCCI

IWC
SCHAFFHAUSEN


JAEGER-LECOULTRE

LONGINES

**MONT
BLANC**

NOMOS
GLASHÜTTE


OMEGA

ORIS
Swiss Made Watches
Since 1904

RADO
SWITZERLAND


TISSOT
SWISS WATCHES SINCE 1853


TUDOR


VACHERON CONSTANTIN
GENÈVE, DEPUIS 1755


BY APPOINTMENT TO
HER MAJESTY THE QUEEN OF DENMARK
GEORG JENSEN
ESTABLISHED 1904

MESSIKA
PARIS

MIKIMOTO


OLE LYNGGAARD
COPENHAGEN

Pomellato

and many more

BUCHERER
1888

Bucherer ILLUM | Østergade 52 | DK-1001 København K

Basel Bern Crans-Montana Geneva Interlaken Lausanne Locarno Lugano Lucerne St.Gallen
St.Moritz Zermatt Zurich | Berlin Dusseldorf Frankfurt Hamburg Munich Nuremberg
Vienna | Copenhagen | London | Paris | bucherer.com



SHOPPING AND DINING

Exclusive shopping..... 8

Shopping secrets 23

Copenhagen City of Design 28

Taste the Town 32

Smørrebrød – Danish Delight 42

Shopping Secrets – Hyskenstræde 48

Shopping Secrets – Royal District..... 55

SIGHTS AND ATTRACTIONS

Copenhagen by The Sea 56

Christianshavn 61

The Royal District 62

Amalienborg 63

Castle Island 64

Copenhagen for Kids 74

Frederiksberg 76

TASTE THE BEST OF THE
MEDITERRANEAEN

RIZ RAZ
Modern Mediterranean

GREEN BUFFET, STEAKS AND
BURGERS, SEAFOOD, ORGANIC
BEER AND COCKTAILS



LET'S MEAT
HERE!

RIZ RAZ
MODERN MEDITERRANEAN
SINCE 1969

ST. KANNIKESTRÆDE 19
KOMPAGNISTRÆDE 20
COPENHAGEN

Enjoy our beautiful courtyard
11:30-00:00 rizraz.dk

DAYTRIPS FROM
COPENHAGEN

..... 78

North Zealand..... 80

Elsinore 82

Hillerød..... 83

Kronborg..... 84

Frederiksborg Slot..... 86

Roskilde..... 88

Aarhus and Funen..... 92

Odense..... 94

Lund – Sweden..... 98

COPENHAGEN

**RAGNA
ROCK**
MUSEET FOR
POP, ROCK & UNGDOMSKULTUR

MUSIC AND YOUTH
CULTURE ROCK AT THE
COOLEST MUSEUM IN
DENMARK!

”

”MUST SEE” MUSEUM
Et af verdens 15 bedste museer indenfor
moderne museumsdesign og interaktive
udstillinger...
National Geographic, 2017

”MUST SEE” MUSEUM
One of the world’s 15 best museums
in daring designs and interactive
exhibitions...
National Geographic, 2017

Rabalderstræde 16,
MUSICON, 4000 Roskilde
+45 46 31 68 54
museumragnarock.dk

En del af
ROMU

MUSEUMS AND COLLECTIONS

Parkmuseerne	106
Rosenborg Castle	107
SMK National Gallery of Denmark	108
National History Museum of Denmark	110
The David Collection	112
The Hirschsprung Collection	114
Medical Museion	115
Glyptoteket	116
The National Museum	117
Louisiana	118
Thorvaldsens Museum	120
Copenhagen City Hall	121
Royal Danish Library	122
Karen Blixen and Rudolph Tegn timers Museum	123
KØS	124
Maritime Museum of Denmark	125
The Øresund Aquarium	126
The Viking Ships in Roskilde	127
List of Muesums	128
Practical Information and Maps	138

PARK
MUSEER
NE

FROM
PHILIPSEN
TO SALTO
THE COLLECTION
OF DANISH
EARLY MODERN
ART REVISITED

OPENS
MAY 24, 2019

THE DAVID COLLECTION
WWW.DAVIDMUS.DK

WELCOME

Open, easygoing and liveable, Copenhagen is a city designed for people. With its popular green parks and streets made for pedal-power, Copenhagen invites you to explore its sights and neighbourhoods by foot, bicycle, kayak and waterbus. Copenhagen is a city with quality of life, of world-class dining and innovative New Nordic Cuisine. This issue of 'Copenhagen Tourist' lets you discover some of the very best the Danish capital has to offer and introduces you to the city's great classic attractions as well as new, cutting edge urban landmarks.

ENJOY!

National Museum
of Denmark

Visit the largest
museum of Danish
culture and history.
Right in the heart of Copenhagen

www.en.natmus.dk

Nationalmuseet

MEET THE
DANES AND
THE VIKINGS

EXCLUSIVE SHOPPING

The ease and enjoyment of shopping in liveable Copenhagen

Discover the Scandinavian look – and enjoy a little Danish *hygge*. Relaxed and breezy, the Scandinavian look is all about natural beauty and effortless, comfortable wearability. After all, elegance should come from within.

With a square mile of pedestrian-friendly shopping, Copenhagen is the perfect city to go shopping for exclusive fashion and design. You will find many international flagship stores in the area around Østergade along the city's main pedestrian street, Strøget. Here, there are also major department stores with luxury Scandinavian and international brands. Fast transforming, Købmagergade also offers a blend of high-end stores, bookshops and quaint, storied boutiques.

Running parallel with Strøget for almost a kilometre, the laidback and charming Strædet entices you with sidewalk cafés and Scandinavian craft and jewellery studios.

Copenhagen is also a city of easygoing enjoyment – and *hygge*. So, don't forget to drop your shopping bags and soak in the luxury of the moment. Travelling should be inspiring and fun – and exclusive shopping an enjoyable shared experience.



An advertisement for the Chopard L.U.C. Lunar One watch. The watch is shown against a dark blue background with a large, stylized 'C' shape. The watch has a white dial with Roman numerals, a moon phase sub-dial, and a date window. The Chopard logo and 'L.U.C. LUNAR ONE' are visible on the dial. The watch has a black leather strap. Below the watch, the Chopard logo and 'THE ARTISAN OF EMOTIONS - SINCE 1860' are displayed.

stenstrup
WATCHES & JEWELLERY

Østergade 26 Tlf. 3315 2422
1100 København K stenstrupjuveler.dk



Alphabet™ is a flexible sofa concept inspired by toy bricks consisting of modules that can be combined in an endless variety shapes

Visit us at
Valkendorfsgade 5
1151 København K
fritzhanzen.com

FRITZ HANSEN



BITTE KAI RAND

Timeless Scandinavian fashion

BITTE KAI RAND was established in 1981 in the heart of Copenhagen and has created Danish fashion history ever since. The brand is well known for its innovative approach to modern design. With openness to the always-changing world, each collection shows a display of new, inspiring cuts with contrast or material mix as well as new edgy updates on a timeless design. All collections are of high-quality standards and no compromise is made on functionality or comfort. The brand's vision is to inspire you to live as you wish and not to hold back by your clothes. This is the essence of BITTE KAI RAND's design philosophy: "A Feeling to Wear."

Every season you will find new authentic prints and colors, elegant silhouettes and graphic details. The brand's pure and extravagant play with different materials creates a richness that leaves every collection with an unpretentious and cool expression.

The moment you enter their lavish stores you will experience a creative universe with exceptional guidance by the skilled sales advisors. Each store has a cool Scandinavian atmosphere that creates a perfect place to experience the newest collections. Sales advisors invite you to experience the brand's history while trying on the latest styles.



"It's all about inspiration – and not to overrule and dictate women in their style. Design at its best is when it's functional and has great usability. We should not take ourselves so seriously all the time. It's about living the life you want and gets a sense of wellbeing when you get dressed." Bitte Kai Rand, Creative Director.

Visit BITTE KAI RAND in the center of Copenhagen at Pilestræde 26, Lille Strandstræde 22 or in Magasin Du Nord.



Map page 147 92



BUCHERER

FINE JEWELLERY

ROMANCE

Exclusively available in all Bucherer stores
1001 København - Østergade 52 - bucherer.com

☆☆ Milas Jewellery



Dreams of gold made by hand
Milas Jewellery is a shop and goldsmith studio in the heart of old Copenhagen. The jewellery is hand-crafted using exquisite materials, creating personal treasures of gold, diamonds and other precious stones in wonderful colours. Milas Jewellery was established in 1995.



银联卡伴您畅游丹麦

Enjoy your trip in Denmark with UnionPay



漫步在松德堡的濒海幽径, 伴着Strøget步行街的迷人咖啡香, 游弋于皇家商场和机场免税店的购物繁华...

只需一张银联卡, 即可轻松畅游童话圣地, 尝遍丹麦美食、尊享酒店礼遇、纵情购物狂欢, 领略欧洲异国风情。

享你所想, 约惠银联。

刷银联卡享ILLUM高级百货九折优惠, 活动详情可咨询ILLUM



☎ 00-800-800-95516 www.unionpayintl.com

A Global Payment Network



UnionPay Your Way

APAIR MULTIBRAND STORE
Footwear for men & women

Apair City
Ny Østergade 3
1101 København K

Apair Airport
Copenhagen Airport
Transithallen
2770 Kastrup

Apair Waterfront
Philip Heymans Allé 17
2900 Hellerup

Apair Webshop
www.apair.dk

 follow us, [instagram/apairstores](https://www.instagram.com/apairstores)



Shaping emotions since 1834



Kongelig Hofjuvelerer

P.HERTZ



KØBMAGERGADE 34 · 1150 KØBENHAVN K · WWW.PHERTZ.DK



Duvets and bedlinen of the finest quality



Any size and shape



Geismars Weavers - Since 1866

GEISMARS VÆVERIER A/S . STORE STRANDSTRÆDE 21
1255 KØBENHAVN K . TLF.: 33 33 08 30 . WWW.GEISMARS.DK
(BETWEEN KONGENS NYTORV AND AMALIENBORG CASTLE - A BEAUTIFUL WALK)

GEISMARS
SINCE 1866

SHOPPING SECRETS

Branch off from Strøget and discover inspiring pedestrian high streets.

STRÆDET

LAIDBACK CAFÉS AND TOWNHOUSE BOUTIQUES

Running parallel with Strøget, the city's main high street, Strædet, lets you relax over coffee or lunch in the candlelit cafés. With its many basement boutiques selling arts and crafts the street is ultimately discoverable. One of the most lovable stores is the Danish Art & Christmas Shop that will easily warm your all-year yuletide heart.



KØBMARGERGADE

BUSTLING HIGH STREET WITH THE ROUND TOWER

Branching off from Strøget, Købmagergade leads to Nørreport Station and offers a blend of storied boutiques and multi-floor brand stores. On the way, you'll pass the Round Tower. Climb the tower and enjoy sweeping vistas.

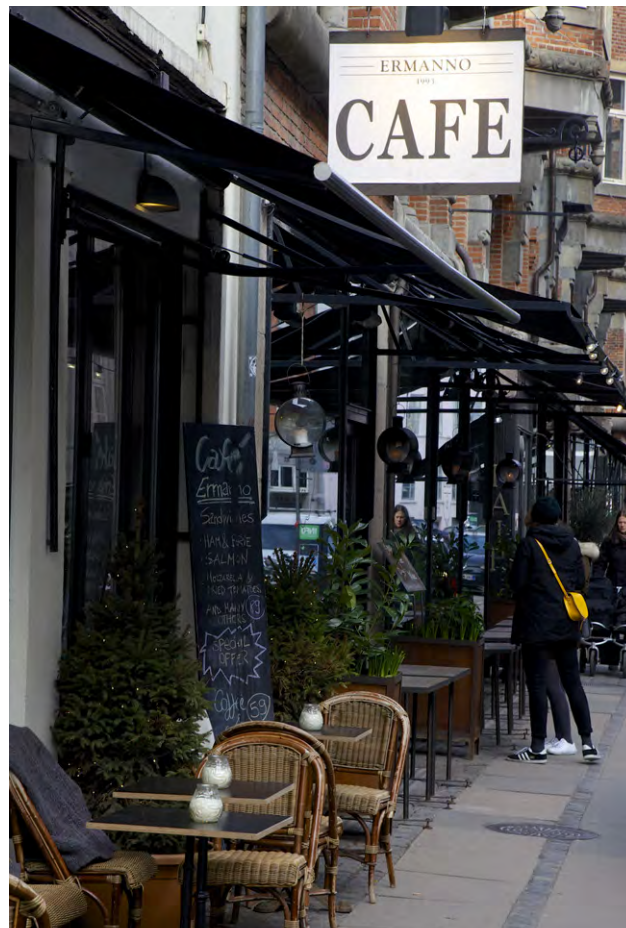


Map page 147 66

STORE STRANDSTRÆDE

DESIGNER BOUTIQUES AND WINE BARS

One of the city's true hidden secrets is a short street called Store Strandstræde branching off one of the city's biggest tourist attractions, Nyhavn Canal – so close to the bustle of the city yet so peaceful. Here you will find elegant design stores, including the lusciously classic Geismar bedding boutique. There are also a wine bar and several restaurants and cafés with a laidback sense luxury.



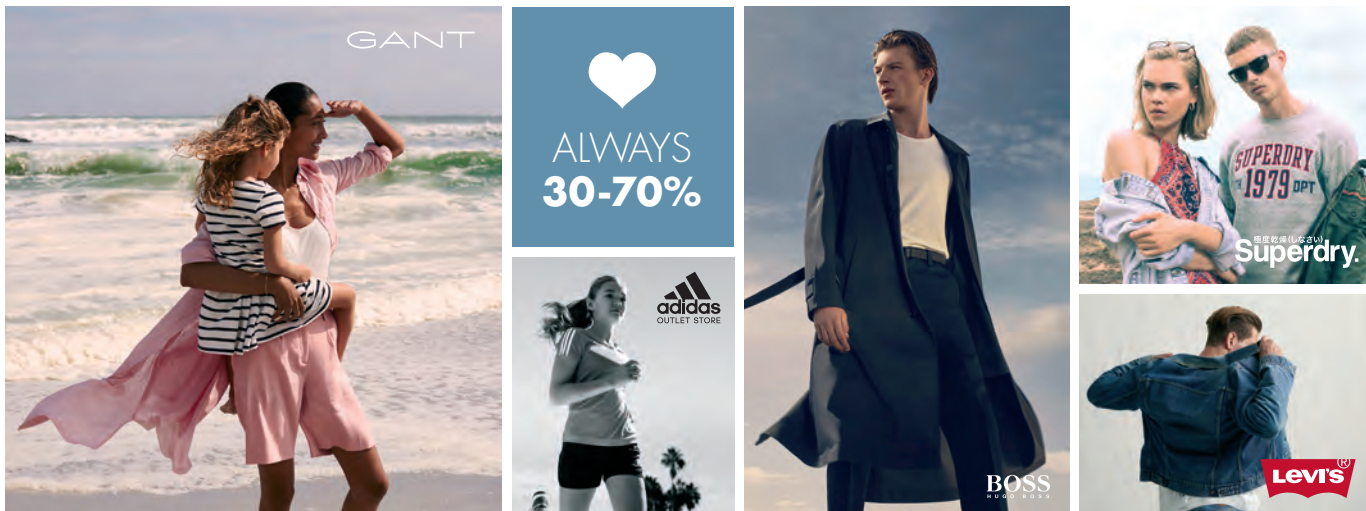
SAVE UP TO 70% ON FAMOUS BRAND PRODUCTS



Come and find your favourite designer brands and save up to 70% on the recommended retail price all year round at Langelinie Outlet. At our unique location, which offers beautiful views of Copenhagen, you can enjoy hot & cold drinks and sandwiches in the café or sandwich bar as well as access to 50 different brands. Parking is free. There is something for everyone. Here you'll find everything from Danish design to iconic fashion brands as well as your preferred sports and casual wear.

LANGELINIEOUTLET

Langelinie Outlet
Centerforening
Langelinie Allé 40
2100 - Copenhagen
www.langelinie-outlet.dk



RINGSTED OUTLET VILLAGE

Visit Ringsted Outlet for a day of unique leisure shopping at Denmark's only international outlet village

Enjoy great savings of 30-70% in top brand flagship outlets such as BOSS, NIKE, LEVI'S, ADIDAS, LACOSTE, SUPERDRY, LE CREUSET, PEAK PERFORMANCE, GANT, GUESS, WOLFORD, PUMA and many more of your favorite brands. Tax Free shopping is offered in most stores.

Ringsted Outlet offers a great variety of fashion for men and women, jeans, children's wear, sportswear, luggage and home & living.

Situated in the beautiful Danish countryside just 40 minutes outside Copenhagen, Ringsted Outlet is part of the typical small Danish village of Ringsted, which is rich in history and everyday life.

The Outlet is located right at exit 36N on the E20 and with 4 trains from Copenhagen every hour, Ringsted is easily accessible by both car and train. From the station the local bus routes will take you to the village.

EXTRA 10% OFF

Bring this advert to our LEGO® Wear Outlet Store to receive our special voucher book offering an additional 10% off in participating stores.
We look forward to welcoming you at Ringsted Outlet

Monday - Friday 10-19 | Saturday - Sunday 10-18
June - July - August: Monday - Friday 9-19 | Saturday - Sunday 9-18
Ringsted Outlet | Klosterparken Allé 1 | 4100 Ringsted | ringstedoutlet.dk



Map page 145 A8

Pixies - Posters - Music - Christmas cards - Paper cutouts — in the heart of Copenhagen



Danish Art & Christmas Shop

Danish designed and traditional handmade
Christmas-ornaments and paper cuts for all seasons



Knabrostræde 3, 1210 Copenhagen K | www.danishshop.dk | phone (+45) 33 32 31 61

Map page 147 15

COPENHAGEN CITY OF DESIGN

Copenhagen is famed for its leading-edge bike infrastructure and contemporary urban design. Get pedalling and discover a city of design!

DANISH ARCHITECTURE CENTRE

New kid on the BLOX

The Danish Architecture Centre (DAC) inaugurated its new home in 2018. The brainchild of Dutch architect studio OMA, the waterside complex, called BLOX, also comprises co-working offices for companies working with sustainable urban design. DAC offers a range of activities and a full programme of exhibitions year-round. There is also a bistro and terrace café – and even a fitness centre. Reach the architecture centre by waterbus No. 991/992 or by biking along Frederiksholms Kanal. www.dac.dk



OFFICINET

Arts and crafts project space

The official project space of the Danish Arts and Crafts Association (K&D) features temporary exhibitions of contemporary works by their many members, including ceramics, textiles and glassware. *Officinet, Bredgade 66*



DESIGN FESTIVALS

3 Days of Design

Design showrooms and design spaces citywide host a three-day design festival with exhibitions, talks and events. Hosted from 23-25 May 2019, the full programme can be found at www.3day-sofdesign.dk



CRAFTS & DESIGN FAIR IN COPENHAGEN

FRUE PLADS MARKED

Dates: 8-9-10 August 2019



Explore the best of Danish crafts and design. With the historical venue *Frue Plads* as scenery for new and established Danish crafts and design professionals, the crafts fair provides an exciting destination as well as a unique look into the world of Danish crafts and design. Meet 130 professionals within the fields of textile, ceramics, glass, jewellery, graphic design and much more.

Opening Hours:

Thursday: 12-7pm
Friday: 10am-7pm
Saturday: 10am-4pm

Nearest metro: Nørreport St.

Free entry



URBAN DESIGN

What better way to discover Copenhagen's new urban districts than by pedal-power. Bike the harbour and explore the city's waterside landmarks. Head out on adventure with Copenhagen's elevated metro line M1 to Ørestad to discover a new district melding into the city's 35km² nature reserve. Or take a metropolitan S-train to Nordhavn Station and stroll through the city's sprawling new dockland developments.



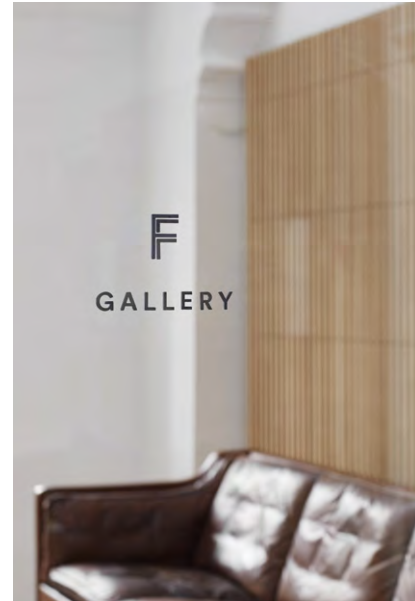
Waterside development in Christianshavn, Krøyers Plads.

FREDERICA FURNITURE

One of the most illustrious proponents of mid-century Danish furniture design, Fredericia Furniture welcomes visitors to their rooftop showroom in the heart of Copenhagen

Fredericia Furniture's Copenhagen Showroom is located at the top of the former Royal Mail House in the heart of the city. Across 1,100 square metres on two floors, Fredericia presents its entire brand universe with stories from its founding until the present day. Visitors can experience everything from classic design icons and creative new products to an inspiring gallery with special highlights, such as Børge Mogensen's prototype 2213 sofa, which for many years stood in the designer's own home.

Fredericia Furniture's was established in 1911 by the Ravnø family with a focus on exceptional craftsmanship, the finest materials and authentic design that transcends time. Today, the company works with a curated circle of international designers. Established names like Jasper Morrison, Space Copenhagen and Welling/Ludvik share the limelight with rising stars on the global design arena. The outcome is a compelling new collection of modern originals that honour Fredericia Furniture's legacy and unique design philosophy.



Fredericia

1 9 1 1



Founded in 1911, Fredericia draws on its heritage of creating iconic, innovative designs developed in collaboration with a circle of internationally recognised designers. Modern originals crafted to last.

Fredericia Showroom, Løvstræde 1, 1152-Copenhagen — [Fredericia.com](https://www.fredericia.com)

JERNBANECAFEEN

The Railroad Pub

Visit my cozy, old fashioned Danish Pub



Agnete Bjørllig
3rd generation owner

Live Music
7 pm every
Sunday
Monday, Tuesday
Wednesday

My guests are young and old, from the city and all over the country - even the whole world. Most guests tell me:

This is the very best pub in town

We always stop by this pub, whenever in Copenhagen



Open
7 am - 2 am
7 days a week

The four generation family behind the success of The Railroad Pub, dressed in typical clothes of 1930'ies. The pub opened here in 1933

JERNBANECAFEEN
The Railroad Pub

Reventlowsgade 16

Find us next to
The Central Station
opposite TIVOLI
1651 Copenhagen V

THE SWEETER SIDE OF COPENHAGEN



DUNKIN'

COPENHAGEN CENTRAL STATION
WWW.DUNKIN-DONUTS.DK

Map page 147 **54**

TASTE THE TOWN

Dining with the locals

Downtown Copenhagen offers a world of dining, not least at charming holiday hotspots such as Tivoli Gardens and Nyhavn Canal. But you'll be surprised just how easy it is to beat the crowds and find laidback eateries almost right around the corner.

Copenhagen is blessed with liveable, leafy historic neighbourhoods with plenty of cafés, bars and eateries. So, hop on a bike and discover the city's buzzing districts. As of August 2019, many neighbourhoods will also become easily accessible by the new circular metro line – a 24/7, fully-automatic service.



MAVEN – RESTAURANT & WINE BAR

Nordic bistro in a medieval church

The church on Nikolaj Plads is home to more than just a contemporary art centre; it also houses a Nordic bistro called 'Maven', which literally means 'The Stomach'. The bistro takes its name from the historic moniker for the inner circle of meat market stalls that sprawled across the church ruins in the nineteenth century. Naturally, the bloody traces has been removed but the informal charm of this historic eatery is still intact. Online table reservation is available and there is outdoor dining on the square during summer months.

Restaurant Maven, Nikolaj Plads 10

www.restaurantmaven.dk

Map page 147 **70**





NØRREBRO

The bikeable neighbourhood of Nørrebro is a travel blogger's favourite. Explore the hipster havens in the side streets to Nørrebrogade, such as Ravnsborggade, Elmegade, Guldbergsgade (bus 5A from Nørreport Station) and Jægersborggade (Metro: Nørrebro Rundel). For a little urban exploring, head to the small street food market, The Tipi Bar, in the most ethnically diverse corner of town.



VESTERBRO

This one-time red light district next to the central station has reinvented itself as one of the city's hippest neighbourhoods. Head to the meatpacking district (Kødbyen) by the Central Station for out-and-about eateries, art galleries and late-night clubbing. For more culinary discovery in the neighbourhood, hotfoot to Istedgade (Metro: Enghave Plads) or Værnedamsvej.

TORVEHALLERNE – THE FOOD HALLS

Bright and shiny, the Copenhagen food halls (Torvehallerne) brim with culinary stalls and food bars. Weekend events add a little extra spirit to the outdoor green market, spilling over to the adjacent park, Israels Plads. Metro: Nørreport Station



STREET FOOD MARKETS

The city's disused shipyard, Refshaleøen has become one of the city's hottest foodie haunts, home to Scandinavia's largest street food market (www.reffen.dk) and numerous under-the-radar eateries, bars and restaurants (waterbus 991/992 and bus 9A). An easier target is the Bridge Street Kitchen market, located on the Christianshavn side of the inner harbour footbridge from Nyhavn. www.bridgestreetkitchen.dk



SECRET DINING PLEASURES IN BOLTENS GAARD

The charming and historical site Boltens Gaard saves secret corners and gastronomic treasures in the heart of Copenhagen. Just next to Kongens Nytorv Metro and with an entrance both from Store Kongens Gade and Gothersgade.

Restaurant “Den Lille Fede” is situated in the old courtyard. Originally the building around Boltens Gaard was central for international trading in Copenhagen.

The courtyard is a small and beautiful oasis in the middle of the city where you can enjoy a lovely dinner. Restaurant Den Lille Fede is cosy and romantic, the staff are humoristic and warm and will make you feel comfortable while they serve delicious courses and plenty of wine.

During summertime you can eat your dinner outside in the little courtyard area.

A guest said on TripAdvisor...

“The staff are really personable and talked us through each dish and wine pairing. The flavours



were incredible, the portions were perfect, it was not a ‘fussy’ restaurant but instead provided a comfortable, intimate and relaxed venue. I would highly recommend this restaurant as I also feel the price was very reasonable for both the 7 taster and the wine pairing. Go, you will not be disappointed!”



The menu is served 5 or 7 courses, with or without wine pairing. The food at Den Lille Fede is inspired from all over the world, but always with a twist of New Nordic Cuisine. Den Lille Fede is open for dinner Monday – Saturday 17:30-22:00 and it is a good idea to make a reservation if you want to be sure to have a table.



Den Lille Fede Restaurant
Store Kongensgade 17
1264 København K
denlillefede.com / 3333 7002
@denlillefederestaurant
Boltens Gård close to Kongens Nytorv
Metro Station

Map page 147 48



First impressions deceive at Restaurant TIGHT. Once you have stepped inside and upstairs then what may from the outside have seemed like a small restaurant becomes a grand three-levelled dining space. The atmosphere is both comfortable and enjoyable. The restaurant décor reveals the original timber frame structure and redbrick masonry of the building.



Restaurant TIGHT is situated in a beautiful historical building from 1800 in the heart of Copenhagen in one of the oldest parts of the city. From its humble beginning as a fifteenth-century merchant’s street, Hyskenstræde where Restaurant TIGHT is located has since evolved into a centre of unique shopping and dining experiences. Read more about the shopping secrets of Hyskenstræde on page 48.



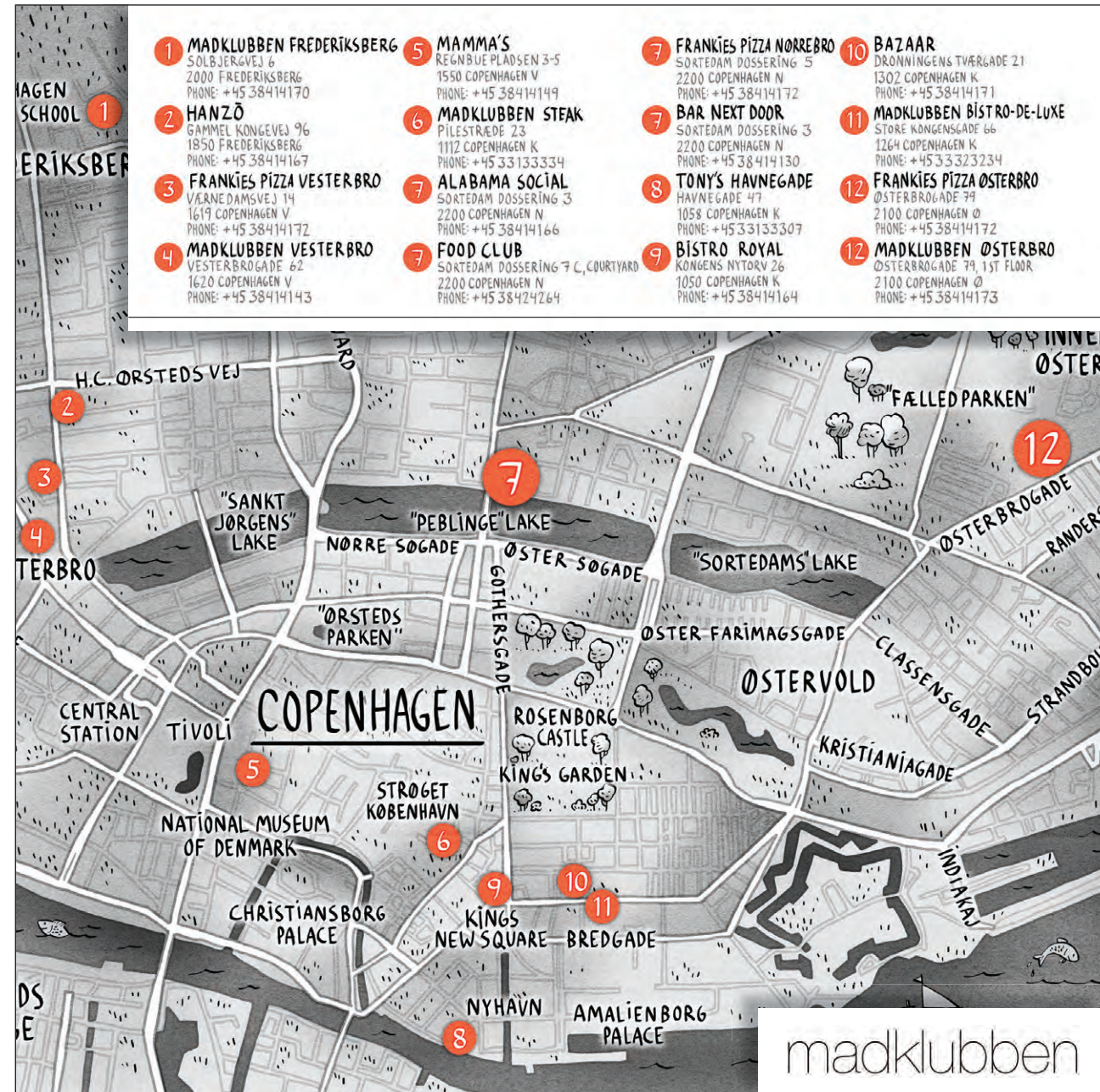
The Nordic cuisine served takes inspiration from the South to create flavourful dishes for lunch and dinner.



Restaurant TIGHT, Hyskenstræde 10, 1207 Copenhagen K
+45 26693999, tightkbh@gmail.com – www.tight-cph.dk



Enjoy a cocktail in the bar.



WHICH RESTAURANTS ARE YOU LOOKING FOR WHEN TRAVELING?

We are a family of restaurants found all over Copenhagen and each location has it's own unique menu and interior design.

At one restaurant you can enjoy a modern European fare, another offers sustainable greens and a third may specialize in Italian cooking.



All our restaurants are open for **dinner** and selected restaurants are open for **breakfast** and **lunch** as well.

Madklubben is Danish for "The Food Club" because we care equally about the culinary and the social aspect of dining out.



Explore all of our tasty locations on the map, through madklubben.dk and [@madklubben](https://www.instagram.com/madklubben)



RIZ RAZ

11.30 - 00.00 RIZRAZ.DK

Modern Mediterranean

GREEN BUFFET, STEAKS & BURGERS, SEAFOOD
ORGANIC BEER & COCKTAILS



ST.KANNIKESTRÆDE 19 * KOMPAGNISTRÆDE 20 * COPENHAGEN

Enjoy our beautiful COURTYARD

Map page 147 19



FLAMMEN

BUFFET WITH SOMETHING FOR EVERY TASTE

Restaurant Flammen is a Danish, family-owned restaurant chain based on the old inn traditions of Southern Jutland, with real Danish cosiness and plenty of food for everyone. Our grill buffet offers 15 different types of meat and a huge salad bar with at least 50 options and 10 hot side dishes, which means just about everyone will leave feeling full and satisfied.

STARTERS

If you want to warm up your palate with some light starters, we always have at least 3 available at the buffet. Enjoy a small, light course before filling up your plate at the large buffet.

MEAT

Our buffet is particularly famous for its broad selection of different cuts of meat. We always have at least 15 different types of meat on the grill, which you can freely choose between. You will find both exotic and very classic selections. If you want to learn more, please ask our friendly and skilled meat carvers, who are ready to help you by the grill.

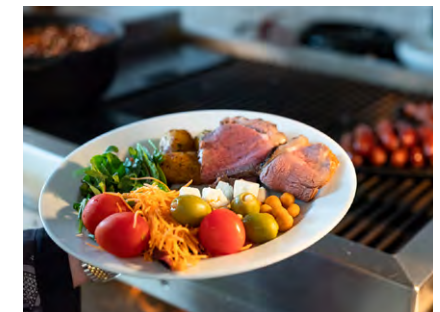
SIDE DISHES

Side dishes are a must. We have a hot buffet that always offers at least 10 different side dishes. We have a varied selection that goes well with the meat on the grill and our different sauces.

If you want to have some greens on your plate, we have a huge salad bar with 50 selections at the buffet. You can mix and match your salad, just the way you like it.

ADDITIONAL PURCHASES

When you buy a buffet at Flammen, you can naturally also buy a selection of delicious items to go with it. We have various beers, soft drinks and wine, which go great with our different types of meat and side dishes. If you want to find just the right beer, please ask our employees for advice. Should the sweet tooth still demand attention after dinner, you can of course also order our delicious desserts.



Nyropsgade 2 – 1602 Copenhagen V
H. C. Andersens Boulevard 37 –
1553 Copenhagen V
www.restaurant-flammen.dk

Map page 147 83



SMØRREBRØD – DANISH DELIGHTS

Nothing says traditional Danish cuisine more than delectable open-faced sandwiches.

Traditional sandwich-making in Denmark is the art of combination – from sweet and sour to hot and cold. Known as *‘smørrebrød’* in Danish, the open-faced sandwich consists of a buttered slice of sourdough rye bread with toppings. Depending on the restaurant, some serve these lunchtime favourites as simple, masterly titbits in the New Nordic tradition, whereas others serve elaborately garnished dishes abundant in flavours and condiments. Two to three such sandwiches are recommended for a full lunch. The usual order is to start with seafood, continue with cold cuts and conclude with a cheese version, which is often presented on sourdough white bread.

Cured, smoked or marinated herring or other kinds of seafood can be

an acquired taste, but when well-made they are delicately balanced and rich in contrasts and textures.

Traditionally, open-faced sandwiches are enjoyed with beer or a small glass of aquavit. Modern drinking habits have modified lunchtime alcohol consumption but recent years have seen a newfound interest in artisanal beers and aquavit, often specifically designed to complement your choice of dishes. No visit to Copenhagen is complete without a *‘smørrebrød’* lunch in one of the city’s warm and friendly lunchtime eateries, such as the charming traditional basement establishments Tivolihallen and Restaurant 1733 – and Fru Nimb in magical Tivoli Gardens.



FRU NIMB

An authentic dining experience in the heart of Tivoli Gardens

Fru Nimb is named after Louise Nimb, founder of one of the first restaurants in Denmark to offer a *‘smørrebrød’* menu in the 1800s. Located in the heart of magical Tivoli Gardens, the restaurant is dedicated to the traditional Danish culinary craft and is a prime location for those seeking authentic *‘smørrebrød’* made with local produce and passion. The restaurant also offers a chance to try these lunchtime favourites in the evening in addition to a choice of hearty dinner-time favourites. Their traditional drinks list includes Fru Nimb’s house-made aquavit infused with fruit and nuts or herbs from Tivoli Gardens. A visit to Fru Nimb requires paying admission to Tivoli Gardens.



Fru Nimb, Bernstoffsgade 5
www.nimb.dk

Map page 147 **7**





GAMMEL HUMLEBÆK KRO
Classic flavours with a modern twist

Nestled under the lush summer greenery of North Zealand just a few hundred metres from the sea, you will find the old wayside inn of Gammel Humlebæk Kro. There is just 200 metres to the Louisiana Museum of Modern Art and 8 km to Elsinore and Kronborg Castle. Your host, Jane Kensler, invites you to enjoy the authentic historic atmosphere of the inn and she takes great pride in serving only the very best home-cooked dishes and famous ‘smørrebrød’.

Gammel Humlebæk Kro, Humlebæk Strandvej 2A www.gamlehumlebaekkro.dk

Map page 145 F2 Map page 80 **6**

KROGS FISKERESTAURANT
Old-world charm and seafood heritage

One of Copenhagen’s oldest and most charming fish restaurants, Krogs is located where once the city’s fish market was to be found. Celebrated for its seafood, the à la carte restaurant also serves meat dishes and tasting menus. Naturally, lunchtime at Krogs means ‘smørrebrød’ with a chance to explore cured and marinated seafood and other savoury open-faced sandwich classics. Online table reservation is available.

Krogs Fiskerestaurant, Gammel Strand 38, www.krogs.dk

Map page 147 **68**



RESTAURANT
1733

In the old toy workshop of Kay Bojesen, overlooking Slotsholmens Kanal, Christiansborg and Thorvaldsens Museum, one of the newest lunch restaurants of Copenhagen is located. Step a few steps down into the lovely bright rooms of Dan and Peter, where they serve classic Danish open-faced sandwiches with a modern touch.

The atmosphere is fresh, unpretentious and down to earth. Here is room for everyone and they are always ready with open arms.

Nybrogade 14, 1203 Copenhagen
Tel.: +45 34 12 17 33 · www.1733.dk



Map page 147 **99**

WELCOME TO TIVOLIHALLEN

Mother's recipes and a friendly welcome

Tivolihallen has been serving Copenhagen since 1791. We offer a wide variety of open-faced sandwiches (smørrebrød) both for lunch and for dinner.

For dinner we also have an exciting selection of time-honored traditional Danish meals including pan-fried fillet of plaice with pickle sauce, and offer a sampler "A taste of Denmark", which will let you taste some of our favorites.

Visit us for a true Copenhagen experience in Danish Cuisine. We are listed in in the book: "1001 Restaurants You Must Experience Before You Die" where only 4 Danish restaurants are listed.

We look forward to seeing you!



We are open from 11:30-9:30 pm
Monday-Saturday

Vester Voldgade 91, 1552 København V
Tel. + 45 3311 0160
www.tivolihallen.dk

Map page 147 **46**



What's on in Copenhagen?

If you're ready for jazz, foodie events or street parties, get the full overview of this month's highlights at www.cph-tourist.dk

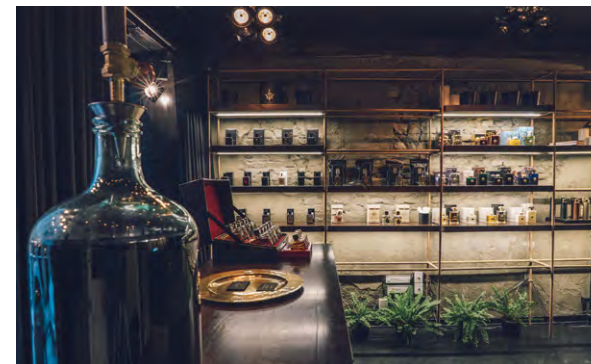
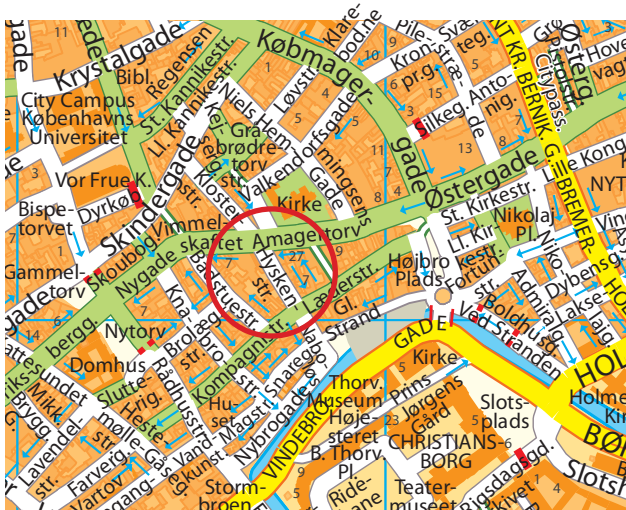


THE SECRETS OF HYSKENSTRÆDE

Connecting Copenhagen's two main parallel shopping drags, the classic street of Hyskenstræde offers a world of boutique shopping.

With almost a square mile of pedestrian-friendly shopping, Copenhagen offers plenty of hidden secrets for those looking for one-of-a-kind crafts and creative fashion. One such secret is the narrow side street of Hyskenstræde, which connects the city's main shopping drag, Strøget, with the Kompagnistræde section of its laidback parallel twin, Strædet.

Hyskenstræde offers such magical boutiques as Rêve de Renard with embroidery and flawless clothing. Also, the bespoke women's fashion store ThiThao and the gala-gown boutique Mannequin Shop. Hyskenstræde is also home to Copenhagen's first niche perfume boutique, Crime Passionnel. Other inspiring stores include the charming gift shop Akimbo and the grand silverware purveyors Sølvkælder and H. Danielsens Eftf. Enjoy refreshments and Nordic dishes at Tight Restaurant & Bar.



CRIME PASSIONNEL PARFUMERIE

Copenhagen's first niche perfume boutique

Crime Passionnel is the first specialized niche perfume boutique in Copenhagen offering narrow range of sophisticated fragrances. Boutique distances itself from the concept of mindless consuming & takes customers to an emotional journey evoked by scents. Store is dedicated to the best that the fine fragrance market has to offer. No one deserves to smell like someone's ex-lover. Therefore the boutique doesn't have best sellers. "Shopping is no longer about buying. It's about experience with extra emotional added value. Our goal is not just to sell – we tell stories that transforms into passion. It's always more than just a business" says the co-founder Aivaras who is also the host of the store.

Tripadvisor Certificate of Excellence.

Come naked – we promise to dress you up with hard to resist gowns of luxury fragrance.

Crime Passionnel Parfumerie
Hyskenstræde 14, st., Copenhagen
After closing hours/private shopping +4542766611
www.crime-passionnel.com

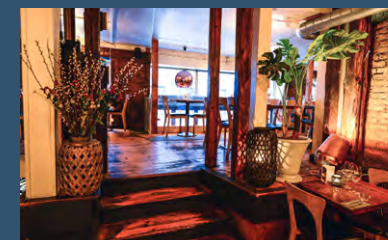
f crimepassionnel
@crime.passionnel



TIGHT
RESTAURANT & BAR

Our Nordic kitchen takes inspiration from the South to create tasteful dishes for lunch and dinner.

3 small dishes
149 kr.



Combine a lunch platter from our selection of small dishes or choose between our large lunch dishes.



An evening in historical surroundings with a charming, authentic atmosphere and delicious cooking. Our friendly staff will welcome you and make sure to give you an exceptional evening.



Restaurant TIGHT, Hyskenstræde 10, 1207 Copenhagen K
+45 26693999, tightkbh@gmail.com – www.tight-cph.dk



MANNEQUIN SHOP – TATJANA DESIGN
Do as the celebs – visit Mannequin Shop!


Mannequin Shop always has up to 500 different, unique and amazing both short and long dresses. The dresses are available in sizes 34-50, and in a price range from DKK 399-1999.

Hyskenstræde 3, www.mannequin-shop.dk, +45 33 13 50 24



AKIMBO
The city's most charming gift shop

A charming vintage basement gift shop filled with creative ideas and hygge. It's the perfect place to find a unique Copenhagen souvenirs and browse through possibly the largest selection of Moomin in Copenhagen.

Hyskenstræde 3, bsmt.  @butik.akimbo  butik-akimbo

H. DANIELSENS EFTF.
The 112 year old H. Danielsen Eftf. store is one of the Old Town Center's oldest exclusive antique stores and is still bustling with activity.

H. Danielsen Eftf. is found just off the elegant pedestrian shopping street of Læderstræde on the cosy side street of Hyskenstræde.

The Kronquist family still runs the tradition-bound store although the store's name gives another impression. The present owner Mr. Jens Kronquist has carefully assembled a wide assortment of modern and antique Danish silver and jewellery as well as other types of antiques including porcelain pieces. Many celebrities have visited the store through the years including Johnny Cash, Meryl Streep and Bruce Springsteen.

Hyskenstræde 5
www.danielsensilver.dk



THITHAO

COPENHAGEN

Visit Thi Thao Copenhagen and bring home a Danish design piece of garment.

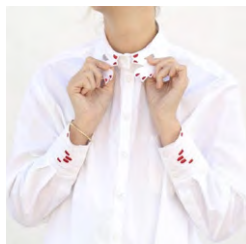
We develop new designs on a daily basis and produce them in limited editions from our sewing facility in Hyskenstræde 7.

Our designs are widely used on TV, by Danish celebrities, members of parliament and leading Danish power-women.

Phone: (+45) 35 14 22 22
www.thithao.com







REVE DE RENARD – HYSKENSTRÆDE

At rêve de renard we dream about flawless clothes, impeccable craftsmanship, and beautiful embroidery.

rêve de renard opened its doors in an old bakery in Hyskenstræde 8 in August 2017, in a building from 1798.

rêve de renard is the reflections of Emilie Schram's dreams. Trained at design school Margrethe Skolen in Copenhagen, and haute couture embroidery school École Lesage in Paris, she has a strong background in fashion design and the making of couture.

In the store you will find a curated selection of brands that no other store in Denmark carry. Among others: Oscar de la Renta, Vivetta, Delpozo, Christian Wijnants, Maticevski, Pallas Paris and more.

rêve de renard

Hyskenstræde 8, 1207 Copenhagen

Go to www.reve-de-renard.com to see opening hours and the full brand list.

SØLVKÆLDEREN

Perhaps the largest of its kind in Europe, Sølvkælderens is the exclusive purveyor of silver and silver-plated artefacts.

Sølvkælderens is more than 100 years old and is located in a heritage-listed building from 1797 on Kompagnistræde – just opposite Hyskenstræde. Here you will find new, vintage and antique silverware pieces, mostly Danish. You can find cutlery, coffee & teapots, sugar bowls & creamers, pitchers, plates, serving pieces, goblets, candlesticks, table flags and everything in between. There is something for everyone. Visit us for an exceptional experience.

Opening hours
Mon-Fri 10:00-17:30,
Sat 10:00-14:00

Kompagnistræde 1,
Phone +45 3313 3634



SIDE STREET SHOPPING

In-the-know shopping in Copenhagen

With almost a square mile of pedestrian-friendly shopping in central Copenhagen there are plenty of side streets and leafy squares to discover. Some of them are true treasure troves of boutique shopping and relaxed dining. Follow in the footsteps of the locals and discover the city's side-street shopping.



PILESTRÆDE

Once lined with late-night dive bars, the street now curates one of the city's finest blends of fashion stores, design boutiques and on-trend eateries.

KRONPRINSENSGADE

A fashion street with flagship stores, mainly local Danish brands. The street, which spills into Pilestræde, has attracted fashionistas for more than two decades.

Afternoon tea at Perch's

Enjoy a delightful afternoon tea menu in the cozy and elegant atmosphere of Perch's Tea Room situated in the heart of Copenhagen. The competent staff will guide you through the list of 150 kinds of tea, served with scones, delicious finger sandwiches and an assortment of beautiful cakes.

The Tea Shop situated below the Tea Room was founded in 1835 and the interior hasn't changed much. A historical shop where quality and tradition is the company's most important key words.



Opening hours MON-THU 9.00 - 17.30, FRI 9.00 - 19.00, SAT 9.30 - 16.00
Tea Room reservation at tearoom@perchstearoom.dk or +45 33 15 35 62
Kronprinsensgade 5, 1114 København K

SHOPPING SECRETS

Copenhagen's royal district

Copenhagen's royal district of Frederikssten leads from the painterly houses of Nyhavn to the city's leafy citadel, Kastellet. Museums, restaurants and art galleries flank the regal arteries of Bredgade and Store Kongensgade. But many side streets are also great places to go treasure-hunting.



GEISMARS

The fine art of weaving

One of Copenhagen's oldest and most venerable brands – purveyor of exquisite bed linen and terrycloth made from the finest of cotton – is to be found on the city's hottest fashionista street, Store Strandstræde, which is located just a short stride from Bredgade. Dating from 1866, the Geismars Væverier weaving company also offers high-quality bedlinen, duvets and pillows for that perfect night's sleep.

Geismars, Store Strandstræde 21
www.geismars.com



ALIDA MARSTRAND

Chocolates fit for royalty.

This timeless boutique selling the finest of handmade chocolates was founded in 1930 by Alida Marstrand, a young widow with five children. Alida had inherited the chocolate recipes from her mother, who had learned the art of chocolate-making from a purveyor to the Russian Imperial Court. The very same recipes are still used today by boutique-owner and chocolatier Gunhild Persson. Local Danes, tourists and even members of the royal family drop by this basement boutique for chocolatier treats.

Alida Marstrand Chokolade, Bredgade 14

www.alida-marstrand.dk



COPENHAGEN A CITY BY THE SEA

*Head to the beach or discover Copenhagen's inspiring waterways
by picnic boat, tourist boat or kayak*

Miles of sandy urban beach, meandering historic canals and ultramodern docklands. Grab a bike, a picnic boat or go kayaking along Copenhagen's inspiring waterways. Or discover a houseboat café or harbourside eatery and savour the moment.

GET ACTIVE

Great ways to discover Copenhagen's nature and waterways



BIKE THE HARBOUR

Urban exploring by pedal-power

Copenhagen harbour has a signposted circular bike route (the Harbour Circle) that takes you along 13 km of waterside bike lanes from the inner harbour footbridge by Nyhavn to the city's modern canal district, Sluseholmen. Here, you'll experience new dockland developments and open nature. Map: www.visitcopenhagen.com/lharbourcircle



GO BOATING

Be your own captain for a day

What better way to discover the city's waterways than in a small electric picnic boat – where you'll be the captain! Book your boat online from www.goboat.dk or www.friendships.dk. You can also hire kayaks from www.kayakrepublic.dk. Less experienced can join guided tours on easy sit-on-top kayaks. The rest of the adventure is up to you – ahoy there!

NETTO-BÅDENE



**A WONDERFUL tour
for 50 kr A/20 kr C**



SIGHTSEEING BY BOAT

Experience Copenhagen from the waterside, on board a blue NETTO-BOAT.

Make yourself comfortable and enjoy the scenery, while our guide tells about the beautiful sights in Danish, English and German.

The tour starts at Holmens Church or Nyhavn (Heibergsgade)

Duration: 60 min.

Prices: Adults 50 DKK - Children 20 DKK.

Map page 147 **23**

THE LITTLE MERMAID*An enduring symbol of love*

For a century, the Little Mermaid statue, the embodiment of Hans Christian Andersen's fairytale, has perched on her stone by the Copenhagen waterfront. Here she cuts a tragic figure, suffering for her dream prince. Small wonder that the statue has been the victim of rebellion. Radicals have painted her over, she's been beheaded by maverick artists (twice!). The statue was created by sculptor Edward Eriksen (1876-1959), who used his wife, Eline, as a model.

**NYHAVN CANAL***Old schooners, storytelling and seafood*

Sun-kissed Nyhavn Canal is one of Europe's most romantic heritage harbours. Once home to shady sailor's joints, today's Nyhavn is a picture-postcard dining spot. The name, Nyhavn, means 'New Harbour', although the canal, dug by Swedish prisoners of war from 1671-73, is one of Copenhagen's oldest. Storyteller Hans Christian Andersen penned his fairytales 'The Princess and the Pea' and 'The Tinderbox' while dwelling at Nyhavn No. 20.

**OFELIA PLADS***Sundown jazz and open-air reverie*

Just a two-minute walk from the bustling Nyhavn Canal you find Ofelia Plads. Here you can enjoy sundown jazz with a view to old schooners. Food

trucks and open-air events also add buzz. To reach the wharf, walk around the Royal Playhouse along the waterfront promenade. Don't forget to walk to the end for a splendid harbour view.



See the main attractions in and around Copenhagen by bus and boat



Hop On – Hop Off bus and boat · The Original 'Grand Tour of Copenhagen' Canal Boat tour · Tivoli combination tours · Royal Castle day tour · Two countries in one day (Sweden and Denmark) · In the Footsteps of the Vikings · Guided Panorama Bus Sightseeing · Music cruises · Authentic lake boat tour north of Copenhagen

For more information and booking, visit

GREEN BIKING

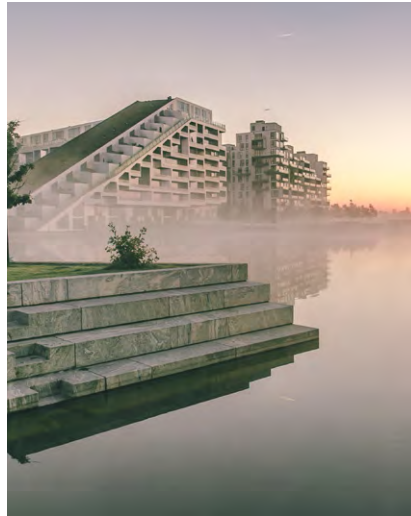
Get wheeling in parkland Copenhagen

An easy city to bike, the streets of Copenhagen can still be daunting for those unfamiliar with urban cycling. Most city parks are off-limits for cyclists but there are leafy urban routes for you to enjoy.



Naturpark Amager - endless nature

Copenhagen has one of the world's largest urban nature reserves, stretching from DR Byen Metro Station all the way to the airport and beyond. The park borders on one of the city's newest neighbourhoods, Ørestad, and offers a total of 35 square kilometres of open plains and scrubland with plenty of cycling paths. Bring your bike on the Metro (avoid rush hours) and head out in the open where you can pick blackberries, wild apples and plums.



A global urban park and romantic rowboats

Explore two of the city's most inspiring parks. Bike down Nørrebrogade to No. 210 and discover a colour-splashed, multi-ethnic urban park (called Superkilen) with furnishings from around the globe. Then head back to Nørrebrogade and cross the street. Follow the green cycling lane (Route No. 51) past urban gardens and activity playgrounds to Frederiksberg. Head to Frederiksberg Garden, a grand romantic green space. Cycling in the park is not permitted but you can reward yourself with a trip on a rowboat along the meandering creek – or watch the roaming elephants in the next-door zoo.



Lakeside cycling to the city's central park

Four major lakes stretch through Copenhagen, separating the inner city from the bustling neighbourhoods. There are bike and footpaths along the embankments. Head across the bridge of Dronning Louises Bro and turn right. Ride along the lakes towards the end and then head to Fælledparken, one of the city's biggest parks with ballgames, activities – and bike lanes. The leafy ride is practically car-free.



CHRISTIANSHAVN

A haven for foodies and bohemians

Languid canals, houseboats and coveted restaurants blend with leafy alternative living and modern designer docklands in one of Copenhagen's oldest heritage quarters, Christianshavn.

A tax break is what it took for King Christian IV (1577-1648) to lure merchants to build their warehouses in the city's Dutch-inspired canal district, Christianshavn, founded in 1618. Today, the neighbourhood tempts you with some of the city's best foodie haunts. Your bohemian soul may also want to discover the city's district of alternative living, Christiania. Walk through the woods and along the lake to spot your dream hippie pad. Towering above it all is one of Europe's most magnificent Late-Baroque church spires, that of the Our Saviour's Church. Jules Verne climbed the spire in the 1880s and was inspired to include it in his 'Journey to the Centre of the Earth'. And the climb still rewards you with a commanding citywide view.



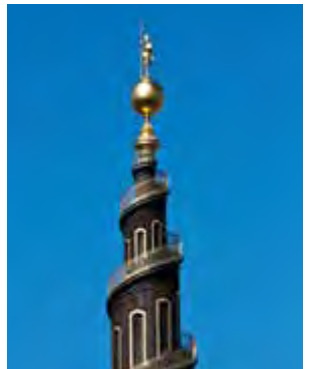
Our Saviour's Church

Vor Frelser Kirke

Our Saviour's Church (1690s) was designed in the Baroque style by royal master builder general Lambert van Haven. The spire was added in the mid-eighteenth century by Lauritz de Thurah, who sought inspiration in the winding spire of the University Church Sant'Ivo della Sapienza in Rome. The exterior spiral stairway has no less than 150 daunting steps. And crowning the spire is a golden globe with a three-metre figure of Christ wielding a victory banner. The splendid altar, designed by Nicodemus Tessin, was commissioned in 1694 and draws inspiration from the altar of Santi Domenico e Sisto in Rome, sculpted by Gian Lorenzo Bernini. Regular church concerts are performed on the magnificent Botzen Brothers organ (built 1696-1698).

Map page 147 **27**

Vor Frelser Kirke Our Saviour's Church



320-year old unique baroque church and organ.
265-year old unique tower with outside, twisted staircase and an impressive view.

Opening hours:

Tower: 23 Feb - 30 April & 1 Oct - 15 Dec:
Mon-Sat 10am-4pm, Sun & Holidays 10:30am-4pm.
1 May - 30 Sep: Mon-Sat 9:30am-7pm, Sun 10:30am-7pm.
Church: Daily all year 11am-3:30pm.

Sct. Annægade 29 • www.vorfrelserkirke.dk

THE ROYAL DISTRICT

Frederiksstaden

Copenhagen's royal district is a place of palatial grace – home to the Queen of Denmark, leading art galleries and vintage design boutiques.

Two regal arteries run through Frederiksstaden, which is Northern Europe's largest Rococo district. Bredgade is known for its art galleries and vintage design showrooms, and Store Kongensgade for its restaurants and easy eateries. In 2019, the new Metro Circle Line will whisk you directly to the Marble Church Station from Kongens Nytorv, but the dis-

trict is well worth discovering on foot. Hotfoot all the way down to Nyboder whose quaint lime-washed boatmen's houses were originally designated for navy personnel, which is why the streets have such exotic names such Krokodillegade (Crocodile Street).



CHANGING OF THE GUARDS

The changing of the royal guards at Amalienborg Palace takes place at 12 o'clock noon. The parade leads the royal guards from Rosenborg Palace through the pedestrianised heart of town to Amalienborg Palace.

THE ROYAL PALACE

The official Copenhagen residences of the royal family, Amalienborg Palace consists of four mansions surround by a monumental octagonal plaza. Visitors can always see when the queen and crown prince are in residence – when the royal ensign flies from their respective homes. Originally, the mansions were the stately dwellings of four noblemen until a winter's night in 1794 when the former royal palace, Christiansborg Palace, was razed by a great fire and the king needed a new home.

ROCOCO DISTRICT

Frederiksstaden was originally envisioned as a new district celebrating the 300th anniversary of the royal Oldenburg dynasty, whose decedents still rule Denmark. The Renaissance-inspired scheme came under way in the 1740s, commissioned by the absolute monarch Frederik V whose equestrian statue is the centrepiece of the Amalienborg Palace square. The founding stone of the district's grandest landmark, the Marble Church was laid in 1749. A project in the making for more than a century, the basilica was finally consecrated in 1894.



Map page 147 **13**

AMALIENBORG PALACE

Complete your visit to the palace square – step inside Amalienborg and experience royal life past and present.

The museum in **Christian VIII's Palace** presents the private interiors of the most recent kings and queens and an exhibit on the monarchy today with its many traditions.

The scope of the museum stretches back 150 years to Christian IX and Queen Louise, who were known as “the in-laws of Europe” because four of their children ascended to the thrones of England, Greece, Russia and Denmark respectively. The museum collection bears witness to a strong family bond with many paintings and cherished photographs of the large family.

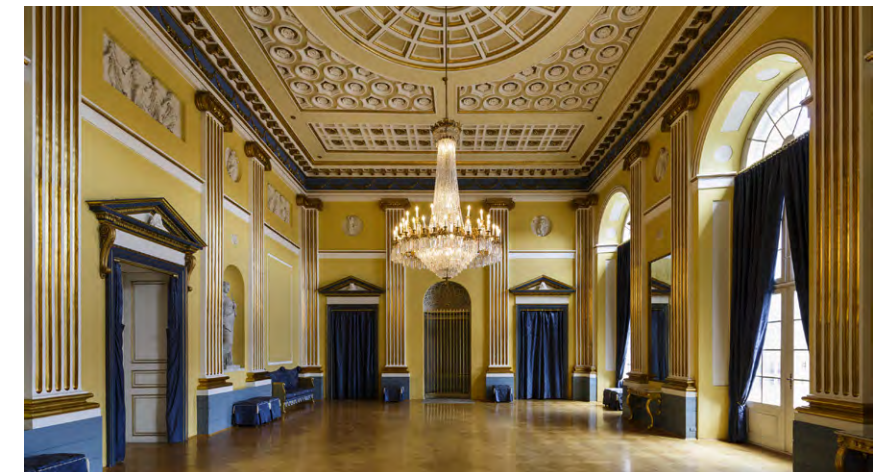
As in a journey through time the rooms of Christian IX, Queen Louise and their descendants stand intact. Each reflects the modern taste of its period and the personalities of the kings and queens, whether it be in military, Victorian, or knightly style.

From the museum there is access to the magnificent royal reception rooms. Not to be missed is the The Gala Hall decorated in neo-classical style at its zenith, and The Appartement Hall in which Bertel Thorvaldsen's gilt-bronze figures are on display.

Christian VII's Palace is also known as HM the Queen's guest palace. You can take a guided tour of the palace and walk in the footsteps of the royal guests. During the tour, you will visit the impressive rooms where the New Year Banquet and other official festivities take place. You can book a place on one of our guided tours on amalienborg.dk or in the ticket office in Christian VI-II's Palace.



The Fabergé coronation brooch is set with diamonds and was made in 1896.



The Gala Hall is impressive in terms of its gilded decoration, size and view to the palace square.

THE CASTLE ISLAND



CHRISTIANSBORG PALACE – VISIT THE QUEEN'S GLITTERING HALLS

Christiansborg Palace is one of the world's few working palaces which you can visit. In The Royal Representation Rooms, The Queen receives kings, queens and presidents. She receives the people in audience, hosts gala dinners, and signs new laws. In the impressive Great Hall you can explore 1000 years of Danish history woven into 17 colourful tapestries.



Go underground and explore the medieval ruins of former castles. This site tells the story of Castle Island which has been the center of power and political intrigue for over 800 years.

The Royal Kitchen glows with all its copper kitchenware. The kitchen is decorated exactly as it was in the 1930s. Take in the smell of sirloin, the sound of sizzling chicken and the beautiful floral decorations.

Meet the royal family's beautiful, white horses in the Royal Stables. The stables along with horses and coaches are still in use today, including the Golden State Coach coated with 24-carat gold leaf. Also visit the impressive palace church. Stand under the dome, look up and let your head spin while staring at the angels 30 meters above you.



DANISH WAR MUSEUM

Take a walk through Danish war history from the 1500s until today.

Experience life as a deployed soldier as you step into Danish military camps from Afghanistan. Stay alert in the watch tower, and climb into an actual PMV hit by a roadside bomb.

Also, get an overview of Danish war history. From knights in shining armour, wars with the Swedish and the English, to World War II, the Cold War and the war in Iraq.

Or relax in the hammocks as you hear stories from the seven seas.

Read more at warmuseum.dk



THE DANISH PARLIAMENT Folketinget

The west and south wings of Christiansborg Castle and King Christian IV's old storage rooms serve as the home of the Danish parliament, the Folketing. The parliament comprises more than 56,000 sq. metres and 750 rooms. Here 179 elected parliamentary members from across the country debate and adopt the laws by which Denmark is governed. To help the parliamentarians conduct their day to day legislative work, all political groups have their own secretariats. Christiansborg also houses the administration of the Folketing and many journalists. During busy periods, more than 1,000 people work in the buildings. Free guided tours in English are conducted selected Sundays and public holidays at 12 pm. Highlights: The Folketing Chamber and Denmark's first democratic constitution from 1849. You are also introduced to the political system in



Denmark. Check dates and book tours at www.ft.dk/visit or call the Visitors' Service weekdays 8.30 am to 3 pm: **+45 3337 3221**. Tickets can also be collected at the main entrance from 10 am on the day of a guided tour. *Map page 147* **25**

TÅRNET – THE TOWER

For almost 100 years there was a secret lumber room at the top of Christiansborg Castle where plaster statues gathered dust and only the Parlia-

ment's officers went when it was necessary to hoist flags. You can enjoy the view from the highest tower in Copenhagen, gain an impression of the fascinating history and visit the spectacular restaurant, where you can enjoy modern Danish dishes and the best of Danish patisserie. The entrance to the tower is at the King's Gate in the centre of Christiansborg Palace - immediately below the tower itself. A visit to the tower is free of charge and it is open every day except Mondays. Find more information at www.taarnet.dk.

Please note that due to renovation, the tower will be closed between 6. June – 31. August 2019".

Map page 147 **14**



THORVALDSENS MUSEUM

Small wonder that the Thorvaldsens Museum is such a favourite. Not only is the museum a paean to the sculptor's own works; its second floor is also home to several small rooms featuring Thorvaldsen's private collections of paintings – one of the best, most intimate collections to be found anywhere in Denmark. Bertel Thorvaldsen (1770-1844) spent more than 40 years of his life in Rome, but in 1838 he bequeathed his comprehensive art collection to the city of his birth, Copenhagen.

The colourful building was erected as a purpose-built museum by architect M.G. Bindesbøll. The frieze surrounding the museum depicts the return of the famous sculptor from Italy and the moving of his sculptures into the museum. Read more about the museum on page 120.



Map page 147 **37**

THE BLACK DIAMOND, ROYAL DANISH LIBRARY Den Sorte Diamant – Det Kgl. Bibliotek

Explore the spectacular architecture, take a break with barista coffee in the café with a splendid view of the harbour canal or enjoy a gourmet meal in the restaurant – the Black Diamond is the contemporary waterfront extension to the Royal Danish Library. A house of culture and a popular spot for the city's many students and other Copenhageners looking for

a calm place to study, work or meet up. The library has Northern Europe's largest collections of rare books and manuscripts. Experience highlights from the collections in a sensual installation by world-famous performance artist Marina Abramović (booking required), or see changing exhibitions of photography and cultural history.

Map page 147 **39**



The Danish Jewish Museum, designed by Daniel Libeskind. Photo: Bitter+Bredt.

THE DANISH JEWISH MUSEUM Dansk Jødisk Museum

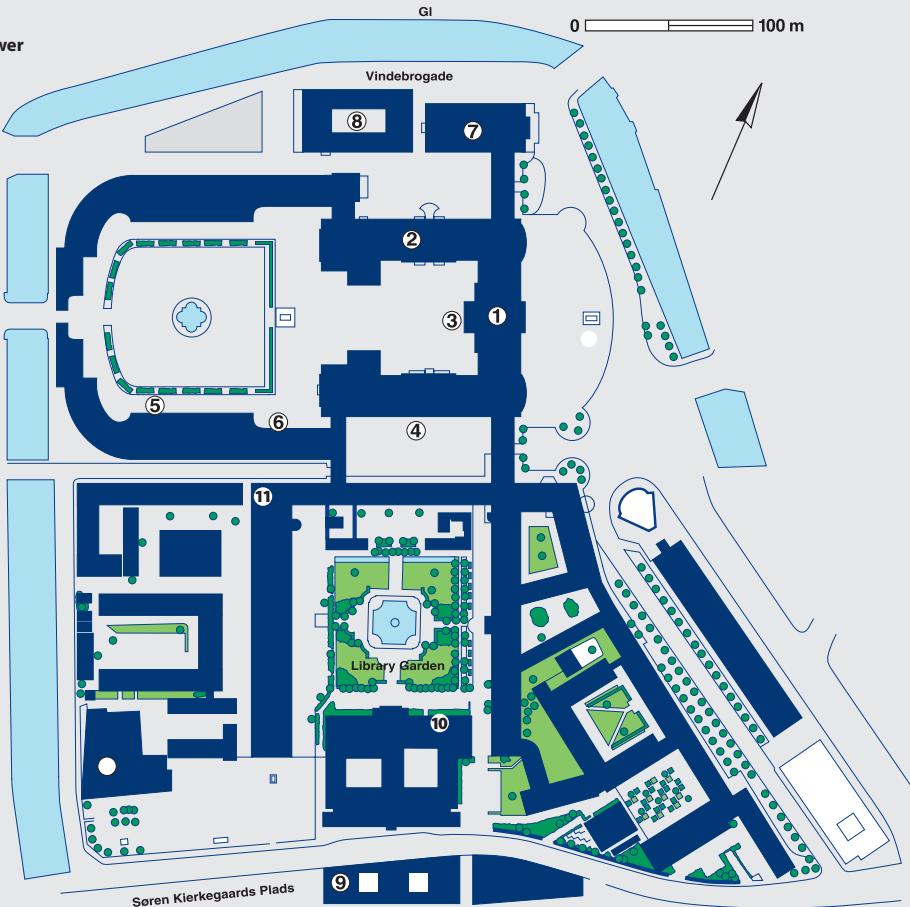
Recounting 400 years of Jewish history in Denmark, the Danish Jewish Museum is located in the old boathouse next to the Royal Danish Library, constructed in the early seventeenth century by Christian IV. The interior of the museum is designed by the world famous architect Daniel Libeskind. The interior reflect the unique story of the Danish Jews during World War II, where most of whom were saved by their Danish compatriots from Nazi persecution. This extraordinary feat is also symbolized in the museum's emblem, 'Mitzvah' – the Hebrew word for 'obligation' or 'good deed'. The Exhibition it self covers all 400 years of Danish Jewish History.

Map page 147 **29**

CASTLE ISLAND

FIND YOUR WAY

- 1. Christiansborg Palace (Slot) and The Tower
- 2. The Royal Reception Rooms
(De Kongelige Repræsentationslokaler)
- 3. The Ruins of Absalon's Castle
(Ruinerne af Absalons Borg)
- 4. The Danish Parliament (Folketinget)
- 5. The Royal Stables and Coaches
(Kongelige Stalde og Kareter)
- 6. The Theatre Museum at the Court Theatre
(Teatermuseet i Hofteatret)
- 7. The Palace Chapel
(Christiansborg Slotskirke)
- 8. Thorvaldsens Museum
- 9. The Black Diamond – The Royal Library
(Den Sorte Diamant – Det Kgl. Bibliotek)
- 10. The Danish Jewish Museum
(Dansk Jødisk Museum)
- 11. Danish War Museum
(Krigsmuseet)



Opening hours: See page 129, 130, 133.

Ripley's Believe It or Not!



GENUINE HUMAN SHRUNKEN HEAD

WE HAVE THE WEIRDEST STUFF IN COPENHAGEN!

Map page 147 17

RÅDHUSPLADSEN 57, CITY HALL SQUARE | RIPLEYS.DK |

©Ripley Entertainment Inc.



EUROPE'S ONLY



ATTRACTION



Map page 147 18

ØSTERGADE 16, STRØGET | TEL 33 32 31 31

©Ripley Entertainment Inc.



ROYAL WOODLANDS

Ancient oaks and roaming deer – just north of Copenhagen you find Jægersborg Dyrehave, a 350-year-old royal hunting ground with ancient oaks, a sandy beach and even the world's oldest amusement park, Bakken.

It's little more than a hop and a skip from central Copenhagen. Just 20 minutes by direct train to Klampenborg Station you reach the ancient oaks of a 350-year-old royal game park with more than 2,000 roaming red deer and fallow deer. You can explore this UNESCO World Heritage site by horse and carriage from the train station. Or if you find the clip-clap of hooves through the 11km² forest a little too slow, you can also rent a mountain bike and go-pro camera for a more rough-and-tumble experience.

The car-free woodland is also the unlikely home of the world's oldest amusement park, Bakken (originally a religious pilgrimage site from 1583).

The folksy park is a great place for the family to let off steam with more than 33 rides and amusements to choose from. You'll find leafy inns and restaurants dotted around the park and in the woodlands by the sandy Bellevue Beach, including the Michelin-starred Røde Cottage. Design buffs also will note that the 1930s modernist beachside complex was designed by one of Denmark's most famous architects, Arne Jacobsen. There is truly something for everyone - children, nature-lovers and gourmants alike – at Jægersborg Dyrehave.



Bakken åbner 12. april 2019

- Tag toget eller bilen til verdens ældste og Danmarks sjoveste forlystelsespark – 10 min. nord for København.
- Køb et turbånd – og få fri adgang til 32 sjove forlystelser!
- Mere end 30 underholdende spil og konkurrencer.
- På Bakken ligger et utal af restauranter, beværtninger, fastfood- og isbarer.

- Besuchen Sie mit dem Zug oder mit dem Auto den ältesten und lustigsten Freizeit- und Erlebnispark Dänemarks – 10 Min. nördlich von Kopenhagen.
- Kaufen Sie ein Mehrfahrten-Armband - und Sie bekommen freien Zugang zu den 32 Fahrattraktionen!
- Mehr als 30 unterhaltsame Spiele und Wettkämpfe.
- Am Bakken liegen unzählige Restaurants, Kneipen, Fastfood-Lokale und Eissalons.

- Take the train or your car to the world's oldest and Denmark's funniest amusement park – 10 minutes north of Copenhagen.
- Buy a wristband and get free access to 32 exciting rides!
- More than 30 entertaining games and competitions.
- At Bakken there are countless restaurants, taverns, fast-food and ice-cream bars.

Åbningstider | Öffnungszeiten | Opening hours

- Besøg www.bakken.dk for åbningstider
- Die aktuellen Öffnungszeiten finden Sie auf www.bakken.dk
- Please visit www.bakken.dk for information on opening hours

Glæd dig til Efterår og Jul på Bakken!

[f Dyrehavsbakken](#) [@bakkendk](#)

Map page 145 FG5 Map page 80 **1**



Dyrehavevej 62 · 2930 Klampenborg
Tlf. +45 3996 2096 · www.bakken.dk

Papercut Paradise

Fairytales were not Hans Christian Andersen's sole art form, as Vincent Van Gogh, a great admirer of his illustrations and papercuts, well knew. Often while talking or telling stories, Andersen made papercuts that he gave to friends and acquaintances - his early designs were not appreciated, but around 1840, when the writer became famous, people started saving them.

Old tradition

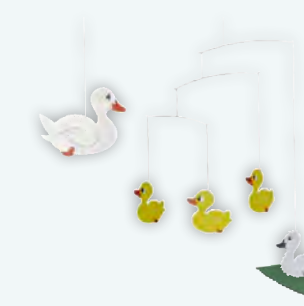
Inspired perhaps by fairytale author Andersen, the papercut or paper art tradition is very old, dating back in Europe to the 16th century and still going strong in Denmark, especially around the festive season.

The visitor will find these cardboard ornaments in homes all round the country, throughout the year, designs changing from season to season. In wintertime, the decorations show Christmas figures and situations, in the spring you will find Easter designs and during the summer and autumn seasonal designs decorate most homes in the form of papercuts or mobiles.



Specialists

In central Copenhagen, The Danish Shop is the absolute mecca for papercut buffs, offering a wide range of cutouts and mobiles of just about everything from ladybirds and tulips to frames featuring angels, dancers and flowers and hearts with trees and Santa figures, cat and heart mobiles, cutouts of trees and pixies – in all imaginable shapes and sizes, oval, round or square.



Danish Art & Christmas Shop

Danish designed and traditional handmade
Christmas-ornaments and paper cuts for all seasons



Knabrostræde 3, 1210 Copenhagen K | www.danishshop.dk | phone (+45) 33 32 31 61

COPENHAGEN FOR KIDS

A great city for families to explore and discover, Copenhagen has much to offer – especially for children.

Fun, educational, inspiring – Copenhagen is a wonder-filled place for kids. The city's science museum, Experimentarium, offers a world of hands-on, minds-on exhibits, including the world's largest interactive cinema. You'll find one of Europe's biggest aquariums, Den Blå Planet, by Copenhagen's 5km sandy urban beach. A 4-million litre Oceanarium and Alaskan sea otters are among the attractions at the whirlpool-shaped aquarium. Copenhagen Zoo lets you explore habitats from every continent in the world and a unique chance to see Tasmanian devils. There's more animal fun in the zoo's tropical biospheres.



Map page 145 F7

CIRCUSMUSEUM.DK
HOVEDPORTEN 6 · 2650 HVIDOVRE

**CIRKUS
MUSEET**
★★★★★

THE NATIONAL MUSEUM FOR CHILDREN

A lot of children think that museums are boring places to visit. You have to be quiet, you can't play and you can't touch anything. But it will no longer be like that. The National Museum has turned everything upside down. Denmark's largest history museum has now got a so-called "boredom button".

LIVE STATUES AND FIRE-BREATHING DRAGONS

Nobody knows what's going to happen when they push the button. Statues come alive, mummies start moving and secret chests open up. Children might encounter fire-breathing dragons or meet intrepid explorers who have risked their life and limb to uncover the mysteries of the past.

THE CHILDREN'S MUSEUM – PLAY AND TOUCH ABSOLUTELY EVERYTHING!

The Children's Museum is an indoor playground where children can play with history surrounding them. They can sail over the sea in a viking ship, play school in a 1930s classroom and cook in an old medieval kitchen. It is a museum where kids can touch absolutely everything and be part of the storytelling!

Visit natmus.dk to find out more!

Map page 147 10



FREDERIKSBERG

Follies, flowerbeds and fun

Wander along the leafy Frederiksberg museum walk through romantic parklands and discover the dark underground cisterns, a heritage home and museums dedicated to satirical sing-alongs and whimsical cartoons.

The green heart of the area is Frederiksberg Gardens, an immaculately kept park in the grand romantic style. Hire rowboat will let you meander down the park stream past follies and flowerbeds. Up on the hill, Frederiksberg Castle nestles in an ochre glow and the gardens even offer a view of the roaming elephants in the next-door Copenhagen Zoo.

A 140-year-old former underground reservoir located in the neighbouring park of Søndermarken, **The Cisterns** is today a unique art space with evoc-



ative exhibitions often involving light setting. Close by, **Bakkehuset** showcases memorial rooms dedicated to its former residents. The sixteenth-century home was once the gathering point of many great personalities, including fairytale writer Hans Christian Andersen. Stroll through the grand romantic Frederiksberg Garden to the main entrance to the park where you will find the **Storm P. Museum**, which spotlights the whimsical cartoons of early nineteenth-century Danish humourist and cartoonist Storm Pedersen. A short stroll will take you to **The Danish Revy Museum** that showcases the nation's rich revue heritage with props, costumes and sound bites.



Cisternerne

Explore a breathtaking underground art space.

On show in 2019:

It is not the end of the world by Danish artist collective SUPERFLEX – a venture into the dark future of climate change.

Storm P. Museum

Life and works of Danish cartoonist and painter Robert Storm Petersen.

On show in 2019:

Storm P. and America (May-Sept)

Alhambra

Museum of humour and satire showing 150 years of Danish entertainment history.



Bakkehuset

Visit an authentic home from the early 1800s, stroll through the romantic garden and enjoy coffee, tea or lunch in the Orangery.

On show in 2019:

Women who write (Jane Austen a.o.) (Apr-Aug)

Møstings House

Exhibition space.

On show: Danish contemporary art.



THE FREDERIKSBERG MUSEUMS

Art, architecture, literature, humor and satire

Enjoy 5 inspirational museums in green surroundings



Museum Pass available for all 5 sites: 145 DKK

See www.frederiksborgmuseerne.dk for opening hours, prices, locations and local websites or see the museumlist at the back.

DAYTRIPS FROM COPENHAGEN

Some of Denmark's most inspiring attractions can be reached within just minutes from central Copenhagen by rail. Combine your stay in the city with the adventure of age-old castles, Viking ships and UNESCO patronage woodlands.

Just 45 minutes by northbound rail from central Copenhagen you reach the historic city of Elsinore, the fictional home of Shakespeare's Hamlet. Along the way, you can explore UNESCO World Heritage woodlands by horse-drawn carriage. And enjoy the views to the sparkling sea. Heading westward from the city, you can reach the ancient city of Roskilde in just 25 minutes. Here you can visit the Viking Ship Museum and Roskilde Cathedral, which is the final resting place for 20 monarchs. With major attractions within an hour's reach, a stay in Copenhagen lets you discover many of Denmark's most inspiring treasures.

The island of Funen in the heart of Denmark is also within easy reach. Here, the city of Odense – hometown of fairytale writer Hans Christian Andersen – can be reached in just 90 minutes by rail. Denmark's second-largest city Aarhus with some of the nation's top attractions is within 3.5 hours by train from Copenhagen.

South Zealand also offers heritage attractions, wide-open countryside and natural wonders such as the mighty white cliffs of the island of Møn – all within a couple of hour's drive from Copenhagen.



ARoS Museum of Modern Art, Aarhus.



*ARoS Museum of Modern Art
Old Town Open-Air Museum*



*Childhood home of
Hans Christian Andersen
Funen Village Open-Air Museum*



*Kronborg Castle
M/S Maritime Museum of Denmark*



*Viking Ship Museum
Roskilde Cathedral*



*Tree-topped white cliffs
UNESCO biotope patronage*



DAYTRIPS TO NORTH ZEALAND

North Zealand offers a lush landscape of UNESCO World Heritage oak woods, royal palaces and inspiring art museums. Winding past seaside villages, Copenhagen’s coastal road offers a sense of old-world grace and charm.

ART AND HERITAGE

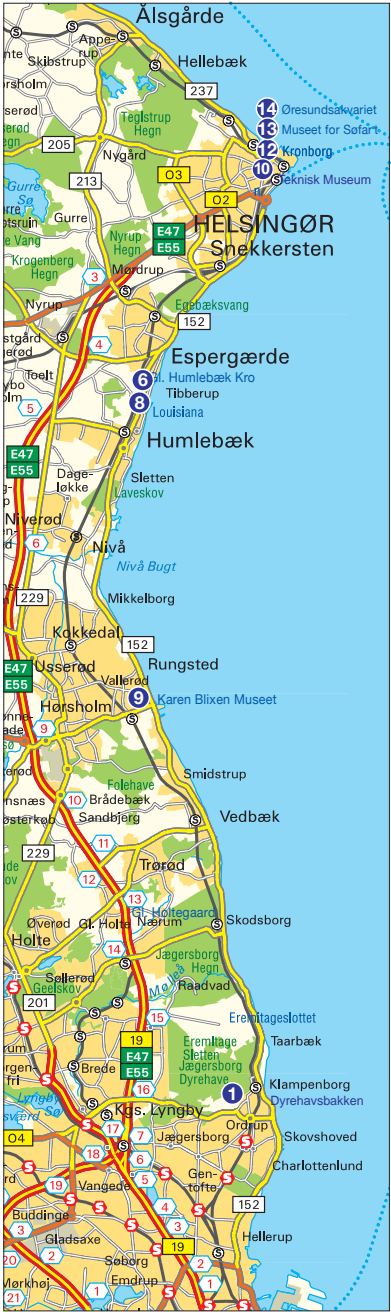
Copenhagen’s coastal road leads north to Elsinore and the fictional home of Shakespeare’s Hamlet – Kronborg Castle. Among the inspiring highlights along the route is the Louisiana Museum of Modern Art, which is one of Scandinavia’s leading art museums. Also sharing a shore-side location is Rungstedlund, the romantic home of a world legend, Karen Blixen, author of ‘Out of Africa’.

Detours from the coastal road let you reach a palatial mansion turned modern art centre, Gl. Holtegaard. Another stately destination, Nivaa-gaard is home to pictorial collections by Baroque

and Renaissance masters. Further inland, you’ll enjoy a chance to visit the Open Air Museum (Frilandsmuseet) with more than 100 historic farms and cottages relocated from the Faroe Islands to northern Germany. Among the unusual experiences are cottages from the islet of Læsø, which are “thatched” using seaweed. Nearby, the romantic mansion of Sophienholm offers lake-side views and contemporary art exhibitions.

ROYAL WOODS

A royal deer park just north of Copenhagen, Jægersborg Dyrehave is a UNESCO World Her-



itage site. Here, you also find the world’s oldest amusement park, Bakken. Park your car by Klampenborg Station and discover the ancient oaks and roaming deer by horse-drawn carriage – or rent mountain bikes. You can also head to the sandy Bellevue Beach by the woods for a dip. There are more UNESCO World Heritage woodlands close to the Queen’s country residence, Fredensborg Palace. And for immaculately manicured formal gardens head to Frederiksborg Castle, which is Denmark’s National History Museum and one of the nation’s finest Renaissance splendours.



Gl. Humlebæk Kro

WWW.GAMLEHUMLEBAEKKRO.DK



Home cooked dishes and famous “smørrebrød” served with a smile in a cosy atmosphere. We are open every day from 12 p.m. Monday closed - then we rest.

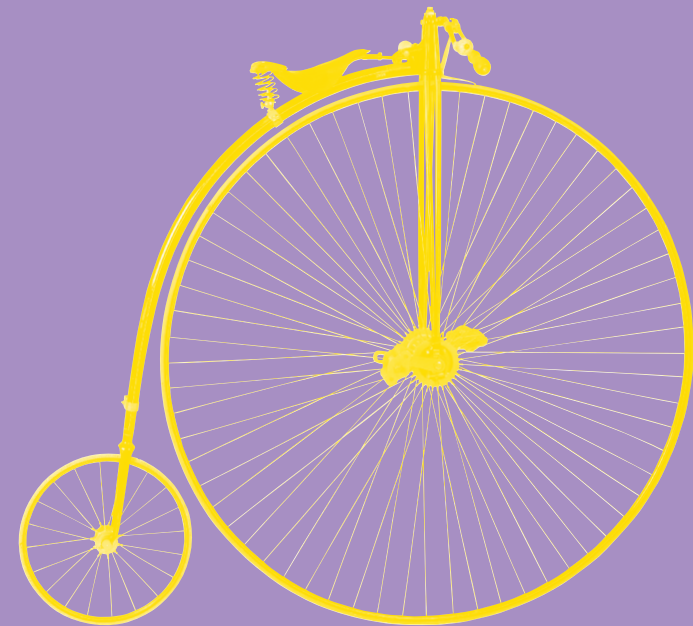
200 m. north of Louisiana - 8 km. to Elsinore and Culture Harbour Kronborg.

**FOR RESERVATIONS
PLEASE CALL US ON +45 49 19 02 65**

Humlebæk Strandvej 2A · 3050 Humlebæk

Map page 145 F3 Map page 80 6

MACHINES THAT CHANGED THE WORLD



FABRIKSVEJ 25
3000 HELSINGØR
TEKNISKUMUSEUM.DK

danmarks
tekniske
museum

Danish Museum of
Science & Technology

EL SINORE

A legendary city with family fun

Few Danish cities are as legendary as Elsinore, the fictional home of Shakespeare's Hamlet, Prince of Denmark. But look beyond the towering castle ramparts and you'll find a medieval city with modern marvels and fun family activities. Elsinore (or Helsingør in Danish) is easily reachable on day-trips from Copenhagen, just 45 minutes by rail.

Technical Museum of Denmark

The museum lets you explore the industrious world of human invention, from fine mechanics to modern robotics. The collections include light aircraft, vintage motorcars and some of Denmark's first computers. There are fun, hands-on activities year-round for the young.

Danmarks Tekniske Museum, Fabriksvej 25, Helsingør

www.tekniskemuseum.dk

MS Maritime Museum of Denmark

An underground museum surrounding the vast open space of a disused dry dock in Elsinore's former shipyard, the MS Maritime Museum features exhibitions on one of Denmark's most successful industries, shipping. Interactive exhibitions make the museum a great place for the whole family.

MS Søfartsmuseet,

Ny Kronborgvej 1,

Helsingør

www.mfs.dk



Museum Nordsjælland

Looking for hidden secrets along Copenhagen's northern Riviera? There's plenty to do besides basking on the sandy beaches next to the wild seals. Museum Nordsjælland comprises exhibitions at local heritage sites across the region, such as the abbey ruins of Æbelholt just outside Elsinore and the boatyards of the historic fishing town of Gilleleje.

www.museumsnd.dk

HILLERØD TOWN MUSEUM

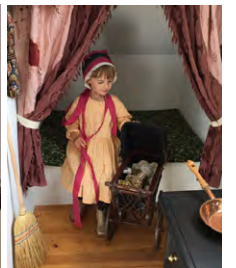
When visiting Frederiksborg Castle in Hillerød, you should also visit Hillerød Town Museum in one corner of the castle gardens.

Visit the "Street of Time" and experience old shops and everyday life as it was in Hillerød in the 1920s – 1960s. Children can turn the handle of the big old cash register, sell and weigh groceries in the old shop. In the old nursery they can cook at the old stove and take the doll for a ride

in the old-fashioned pram or learn how granddad went to school.

Hillerød has experienced many ups and downs with fires, illness and epidemics, poverty and the changing attitudes of the Danish kings. You will learn how Hillerød developed from a tiny village to a thriving market town which is today considered the capital of Northern Zealand.

Map page 87 **2** Map page 147 DE3



OPENING HOURS:

1. May – 31. October
Tuesday – Sunday 10-15

ADMISSION:

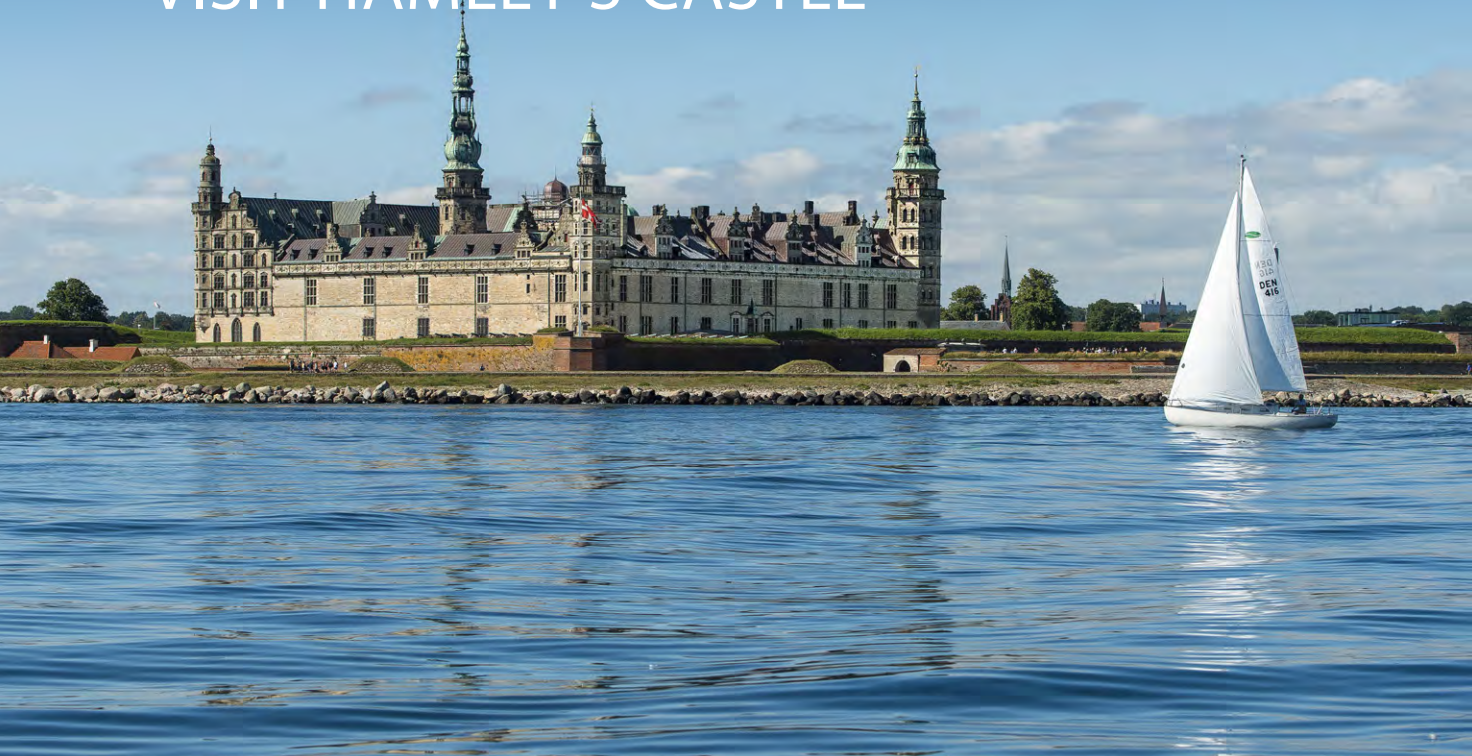
Adults 25 kr. Under 18s free

ADDRESS:

Helsingørsgade 65, 3400 Hillerød
www.museumns.dk

KRONBORG

VISIT HAMLET'S CASTLE



Kronborg is a must-see!
Hamlet's Castle in Elsinore is a UNESCO World Heritage Site with soaring towers, a huge ball room and damp casemates. There are few sites in the world where so much drama and history has taken place.

HAMLET MOVES IN

William Shakespeare made the Danish royal palace in Elsinore world famous when he published the much-loved play about the tragic fate of the Danish prince Hamlet in 1603. During the summer months, Hamlet, Ophelia, Polonius, the ghost and other familiar characters from the play will spring from the pages straight onto the set of Kronborg Castle.



From June to August, the famous scenes come to life and the characters roam the chambers and halls.

Experience their daily lives close up. Talk to the characters and witness their tragic fate as they take up their weapons or poison each other. Sense the atmosphere of tension, fear, intrigue and – true to the spirit of Shakespeare – a good portion of comedy.

THE GRAND BALLROOM

King Frederik II constructed the castle from 1574–1585 at the neck of the Sound – the strait between Denmark and Sweden where passing vessels were once required to pay the so-called 'Sound Dues' to the Danish crown. Kronborg became one of the most magnificent castles in the Renaissance period. Visitors recounted tales of the lavish court life with pomp, splendour and canon blasts.

CASEMATES, HOLGER THE DANE

A damp, musty smell greets you when you go down the stairs to the casemates beneath the castle. Here the ancient Danish hero, Holger the Dane, sits ready to be roused to battle if the country needs him.

A MUST-SEE

'Hamlets Castle in Elsinore' is a must-see for everyone who visits Copenhagen and Northern Zealand.

This UNESCO World Heritage site offers enough experiences for a whole day – but can still be seen in an hour.

HOW TO GET THERE

Kronborg is only a 40-minute train ride from Copenhagen Central Station.

Map page 145 FG2

Map page 80 **12**



HAMLET AT KRONBORG CASTLE 2018

Experience HAMLET LIVE.
From June until the end of August 2019

OPENING HOURS

JANUARY - MARCH

Tuesday - Sunday
11 am - 4 pm

APRIL - MAY

Daily 11 am - 4 pm

JUNE - SEPTEMBER

Daily 10 am - 5:30 pm

OCTOBER - DECEMBER

Tuesday - Sunday 11 am - 4 pm
October also open on Mondays
11 am - 4 pm

The castle is closed on 24, 25 and 31 December, 2019 and on 1 January, 2020.



FREDERIKSBORG CASTLE

History and lush baroque gardens

Northern Europe’s largest and arguably most magnificent Renaissance castle, Frederiksborg Castle is surrounded by Baroque gardens, a castle lake and the vibrant life of one of the region’s most classic merchant towns, Hillerød

A visit to the Renaissance castle in the town of Hillerød just north of Copenhagen not only provides historical insight, it also offers the chance to explore the Baroque castle gardens and go boating on the castle lake aboard MS Frederiksborg.

Furthermore, a stroll through the town’s pedestrian streets lets you experience inspiring boutiques and restaurants.

FREDERIKSBORG CASTLE

The magnificent Renaissance castle was built by Denmark’s most famous king, Christian IV, in the beginning of the seventeenth century, as the potent symbol of a powerful northern European monarch. This intention is reflected in the

many symbolic decorative elements, such as statues and reliefs, the impressive Neptune Fountain and the marble gallery. During the eighteenth century the castle fell out of use as a royal residence, but kept its ceremonial function. During the era of absolute monarchy (1660-1848), the kings of Denmark were anointed in the chapel, and later, under the influence of Romantic nationalism, the castle attained status as a national monument.

THE MUSEUM OF NATIONAL HISTORY

In 1859, a dramatic fire destroyed the greater part of the castle interiors. Only the chapel and the audience chamber with their original and

sumptuous ornamentations escaped the fire. Founder of the Carlsberg Breweries J.C. Jacobsen took an active interest in the restoration of the castle, and in 1878 he established the Museum of National History. He also donated the funds, and the museum was established as a department of the Carlsberg Foundation, as it is still today. The museum illustrates 500 years of Danish history through portraits, history paintings, furniture and decorative art. The historical interiors of the museum and the splendid rooms of the castle, such as the chapel, the Audience Chamber, and the Great Hall, give a sensuous impression of changing styles and epochs. The modern department on the top floor features a substantial collection of twentieth and twenty-first century portraits and history paintings as well as the museum’s photo gallery.

THE BAROQUE GARDEN

The large baroque garden was originally laid out in the 1720s and was re-established in 1996. A

Frederiksborg Castle is an ideal excursion spot, offering cultural experiences as well as scenic walks and boat tours.

walk through the estate offers exceptional views of the castle and a perfect way to round off your visit. Likewise, a visit to the museum can be combined with lunch or refreshments at “Spisestedet Leonora,” the charming little restaurant by the Castle Lake.

ARRIVING

Hillerød is easily reached by car from Copenhagen via motorway no. 16 or by the S-train (line A). Access to Frederiksborg Castle is easy and convenient. There is ample parking space south and west of the castle.

Opening hours: See page 134.

ACTIVITIES

The museum shows a continuous flow of exhibitions reflecting on the main themes of its vast collections; namely portrait art and historical paintings. Children are introduced to the themes of the museum in the children’s exhibition in the old wine cellar of the castle. Go to www.dnm.dk for news and updates.



Explore Frederiksborg Castle and marvel at the detailed artworks.



FREDERIKSBORG

Museum of National History

Royal Castle dating from the 16th and early 17th centuries. Coronation Chapel for Danish Kings, Audience Chamber and Knight’s Hall. Museum of Danish history and portrait collection illustrating the past 500 years of history. New department for the 20th century.

Frederiksborg Castle

3400 Hillerød
Tel. +45 4826 0439
www.dnm.dk



Daily April – October: 10am-5pm
November – March: 11am-3pm
S-train from Copenhagen
Bus no. 301, 302 and 324

Map 1

DAYTRIPS TO ROSKILDE – SACRED MAGNIFICENCE

Discover 1,000 years of Denmark's dramatic past just 25 minutes by rail from Copenhagen.

VIKING SHIP MUSEUM

Sail like a Viking

The Viking Ship Museum is home to five 800-year-old Viking vessels discovered in the local inlet. During summer, visitors can go sailing in reconstructed Viking ships from the museum boatyard where you can also experience the ancient craft of shipbuilding amidst the subtle fragrance of wool, horsehair and resin.

Vikingskibsmuseet, Vindeboder 12

www.vikingskibsmuseet.dk

SKJOLDENÆSHOLM

Open-air tramway museum

You don't need to be a hardcore train-spotter to appreciate the Danish tramway museum, located between the cities of Roskilde and Ringsted. Here, you can ramble along the tracks through leafy woodlands onboard vintage trams from many cities in the world. Great fun for the whole family!

Sporvejsmuseet Skjoldenæsholm, Skjoldenævsvej 95

www.sporvejsmuseet.dk

GULDSMEDENE

Jewellery from Roskilde

A royal city and once the nation's capital, Roskilde is also a charming pedestrianised shopping town. While you're taking in the sights, drop by the city's jewellery store, Guldsmedene. Their designs are crafted in their studio and are exclusively available from the store in Roskilde.

Guldsmedene i Roskilde, Skomagergade 9

www.guldsmedene.dk

RAGNAROCK

The rock and pop museum

Roskilde is famed for its annual rock festival in July. Now, the city is also home to Denmark's official museum for rock and pop music, Ragnarock, which features kaleidoscopic exhibitions of 70 years of youth culture. Bring your bike to Roskilde and ride the new bike lane from Roskilde Station to the museum, located in the creative new neighbourhood of Musicon. The bike lane features a fun pump-track section especially designed for regular bikes with interactive illumination during dark hours.

Ragnarock, Rabalderstræde 16, Roskilde

www.museumragnarock.dk



ROSKILDE CATHEDRAL

The tombs of kings

The 800-year-old sepulchral cathedral is Denmark's oldest Gothic building – and the first cathedral to be built of red brick (3 million of them, to be precise). Enjoying UNESCO World Heritage patronage, the cathedral is the final resting place of 39 Danish kings and queens. Closed to tourists during worship. Check the opening hours online.

Roskilde Domkirke, Domkirkepladsen 3

www.roskildedomkirke.dk

THE LAND OF LEGENDS – AND NATIONAL PARK

Iron Age and Viking Age centre

Just one stop after Roskilde with the regional train, the small town of Lejre is home to an open-air museum, called the Land of Legends, with recreated Iron Age and Viking Age settlements. Fun, hands-on activities bring the museum to life. The area around Lejre and Roskilde has also recently been designated a national park, Skjoldungelandet.

Sagnlandet Lejre, Slangealléen 2, Lejre

www.sagnlandet.dk



RAGNA ROCK

MUSEET FOR
POP, ROCK & UNGDOMSKULTUR

MUSIC AND YOUTH
CULTURE ROCK AT THE
COOLEST MUSEUM IN
DENMARK!

”

”MUST SEE” MUSEUM

Et af verdens 15 bedste museer indenfor moderne museumsdesign og interaktive udstillinger...

National Geographic, 2017

”MUST SEE” MUSEUM

One of the world's 15 best museums in daring designs and interactive exhibitions...

National Geographic, 2017

En del af
ROMU

Map page 145 C7

Rabalderstræde 16,
MUSICON, 4000 Roskilde
+45 46 31 68 54

museumragnarock.dk

Handcrafted jewelry in the heart of Roskilde



Guldsmedene i Roskilde are located in the heart of one of the oldest cities in Denmark – close by the Roskilde Cathedral. Since 1862 there has been a workshop and jewelryshop in the property of Skomagergade 9. Here you will find an exclusive selection of exquisite jewelry from our workshop.

Created by the shopowners and experienced goldsmiths Anders & Vivi Nielsen Hansen.

Our jewelry unites solid and beautiful craftsmanship with our fascination with the magic that occurs – when the raw tool meets with precious metals, finest diamonds, pearls and precious stones.



**GULDSMEDENE
I ROSKILDE**

Skomagergade 9 · 4000 Roskilde
Tlf. 46 35 36 50 · a-v@guldsmed.dk
www.guldsmedene.dk

Map page 145 C7



SKJOLDENÆSHOLM TRAM MUSEUM

A working transport museum, where old trams take you into the surrounding countryside and vintage buses takes you on a bus ride in beautiful Mid Zealand landscape. Located just 65 kilometers southwest of Copenhagen right in the heart of Zealand. The museum is a Danish based international tramway museum and ranks among the five top working tramway museums in the world. The collection comprises about 90 trams, 3 trolleybuses and about 50 vintage buses. There are several exhibition halls and a typical street scene from the 40'ies to the 70'ies is under creation. Unique in the collection is an iconic 1950-built Melbourne tram donated to Danish Crown Princess Frederik and Australian-born Crown Princess Mary as a gift from Melbourne in 2006. Trams run into the woods on the 1,8 kilometer tram line every 10 minutes and vintage buses normally run four times a day.

Open: 21 Apr-20 Oct Sat-Sun & holidays, 10:00-17:00.
25 June-11 Aug also Tue-Fri 10:00-17:00. Monday closed.
31 Aug & 28 Sep late night open 10:00-22:00.
Week 42: daily 10:00-17:00.
14-15 Dec: Christmas open 10:00-16:00.
Admission: Adult DKK 120. Child DKK 60.

Sporvejsmuseet Skjoldenæsholm
Skjoldenæsvvej 95
4174 Jystrup Midtsjælland
www.sporvejsmuseet.dk

Map page 145 A8



AARHUS & FUNEN

Get inspired by Aarhus, Denmark's new destination for the arts, gastronomy and heritage, and discover the adventure of the island of Funen with its fairytale castles and living history.



AARHUS

Emerging as a new European city destination, Aarhus is home to one of Scandinavia's largest and most inspiring art museums, ARoS, which is crowned by a rainbow skywalk that lets you soak in the cityscape while bathed in the hues of the spectrum. The city has an open-air heritage museum that even features a reconstructed street with boutiques from the 1970s. An old university town, Aarhus also has a buzzing Latin Quarter with Nordic-centred eateries and boutique shopping. Cutting into the hillscape just outside town, the Moesgaard Museum is a spectacular new museum relating the history of mankind. Among the unique exhibits is an almost lifelike Iron Age man preserved naturally in a bog for more than 2,000 year. www.visitaarhus.com

FUNEN

The home island of fairytale storyteller Hans Christian Andersen, Funen offers a haven of adventurous attractions. Just an hour by rail from Copenhagen, the heritage town of Nyborg hosts medieval markets at its 800-year-old royal fortress in July and September. Around 30km south of the island's capital, Odense, you reach Egeskov Castle, which was hailed by CNN Travel as one of the world's 12 most amazing historic gardens. www.visitfyn.com

ARoS

AARHUS ART MUSEUM



**FREE
ADMISSION**
18 and under

Take a walk in *Your rainbow panorama*, experience the big sculpture *Boy*, see the unique *The 9 Spaces* with contemporary art and the other galleries of the museum.

TUESDAY-SUNDAY 10-17
WEDNESDAY 10-22
MONDAY OPEN JUNE, JULY AND AUGUST

ARoS Allé 2, 8000 Aarhus C • aros.dk

MEET GRAUBALLE MAN AT MOESGAARD

The world's best preserved bog body



MOMU
MOESGAARD MUSEUM

Moesgaard Museum | Moesgård Allé 15 | 8270 Højbjerg | moesgaardmuseum.dk
Exciting prehistory and ethnographic exhibitions and experiences for the whole family

**#1 of 143
museums
in Denmark**

According to TripAdvisor
Travellers as of February 2019





ODENSE A FAIRYTALE TOWN

‘The Ugly Duckling,’ ‘The Snow Queen’ – many of our childhood’s favourite fairytales were penned by Hans Christian Andersen. And you can’t help but catch the Andersen spirit in his hometown of Odense



The Danish Railway Museum

Experience the history of Denmark’s railways when you step inside the Danish Railway Museum, situated in an authentic engine-shed from 1954.

Take a look inside the royal carriages, experience travelling third class and see Denmark’s oldest preserved steam engine from 1868.

You may enter many of the Museum’s engines and carriages.

Lots of activities for children

Visit the Children’s Railway Station, try the popular mini-train and our large outdoor play area.

Danmarks Jernbanemuseum

Dannebrogsgade 24 • 5000 Odense C



Every day
10 am–4 pm
jernbanemuseet.dk



The son of a cobbler and a laundry woman, Hans Christian Andersen left his hometown Odense on the island of Funen at the tender age of 14 – only to return as a world-famous fairytale writer. Two heritage museums relate the rags-to-riches story of the storyteller, including his childhood home. And close by, The Tinderbox invites children on a journey into Andersen’s universe through storytelling, drama, visual art and music. Here you can also experience the Andersen Parade, a small spectacle that brings Andersen’s famous fairytale characters to life. And there is more learning about the local heritage at the Møntergaarden Museum. But perhaps the most magical experience in Odense is meandering upstream in a riverboat to experience the age of Andersen at the Funen Village, an open-air rural heritage museum complete with old farms, a windmill and watermill relocated from across the island of Funen.

H.C. Andersen’s Odense

Nowhere in the
world do you get as
close to H.C. Andersen
as in Odense

5 in 1

5x Museum
1 Billet/Ticket

H.C. Andersen Museum
Claus Bergs Gade 11, 5000 Odense C
Tel. 65514601 museum@odense.dk

hcandersensodense.dk

ODENSE BYS MUSEER | ODENSE CITY MUSEUMS



MILL TOWN CHARM

Odense is an old mill town and today the city's heritage textile mills have been converted into designs stores, restaurants and the Brandts contemporary arts centre. Make your way down the narrow allies around Vintapper Stræde with their boutiques and eateries.



THE DANISH RAILWAY MUSEUM

Huffing and puffing in the city of Odense

The Danish Railway Museum in Odense is located in a rustic round-house from 1954 right next to the railway station. You can board many of the museum's engines and carriages. Imagine you are the driver of an enormous steam engine or a passenger sitting on an uncomfortable wooden seat in an old carriage. Take a look inside the carriages of Denmark's Royal Family and feel what it is like to travel first class.

The city of Odense is just a 90-minute trip from Copenhagen by rail. heritage textile mills have been converted into designs stores, restaurants and the Brandts contemporary arts centre. Make your way down the narrow allies around Vintapper Stræde with their boutiques and eateries.



There are plenty of opportunities for hours of fascinating play and activities in the Danish Railway Museum for the whole family, and all ages are welcome.

EGESKOV

The Living Castle in Funen

Egeskov is no ordinary castle - it is one of Europe's finest Renaissance buildings, featuring a real moat, spires and ghostly creatures in its masonry. You are more than welcome to take a look inside the castle! The count loves having guests at the castle, in the park, at the playground and at the many inspiring exhibitions in the castle's beautiful farm buildings.

Visit one of Europe's most beautiful historic gardens, which has received an honorary award from The European Garden Network.

OPEN DAILY
27/4 - 20/10 2019



EGESKOV GADE 18 · DK-5772 KVÆRNDRUP
WWW.EGESKOV.DK





LUND

One of Sweden's oldest cities, Lund is a destination of history and charm but also a bustling university city with inspiring boutiques and creative eateries. A unique city experience only half an hour from Copenhagen Airport by regional rail service.

SALUHALLEN

The city's foodie haunt

The turn-of-the-century Saluhallen in Lund is a buzzing food market hall, complete with restaurant annex, located on the city's foodie street Klostergatan. A great time of day to go food-sightseeing is around lunchtime when local shoppers add life to the food bars and stalls. Saluhallen, Mårtenstorget 1, Lund

LUND CATHEDRAL

Listen to history ticking

With more than 900 years of history, Lund Cathedral is one of Scandinavia's oldest places of worship. Steeped in history – and with only the light of the Romanesque windows to guide you



– the cathedral has many secrets and wonders, including the fifteenth-century astronomical clock that shows the phases of the Moon and the direction of the sunset.

Lunds Domkyrka, Kyrkogatan 4

BOTANICAL GARDEN

The world in a hothouse

Among the many leafy parks in the city of Lund, the Botanical Garden, dating from 1690, is one of the most enjoyable and varied. With more than 7,000 varieties of plants from all over the world, half of them thriving in classical hothouses, the garden is well worth a visit at any time of year. Botaniska trädgården, Östra Vallgatan 20

LEXIS PAPPER

Write a travel letter

Why not send a real letter by post to your loved ones from this learned university city? After all, emails and Facebook posts are mere stray thoughts that will never last a lifetime. Lexis Papper is one of Scandinavia's most well-assorted stationery stores and the purveyors of handpick brands from Europe, USA, Japan and Korea. You'll also find the finest Italian paper and a large selection of inks as well as calligraphy brushes and pens. Drop by the store, just 100 metres from Lund Cathedral.

Lexis Papper, Stora Gråbrödersgatan 13
www.lexis.se



Foto: ©Leif Johansson, Xrayfoto

Take a break from your Copenhagen visit with a cross-border daytrip to historical university town Lund in Sweden. With a mere 45 minute train ride from Copenhagen city center, you'll have Lund at your feet!

Find out about things to see and do at www.visitlund.se.

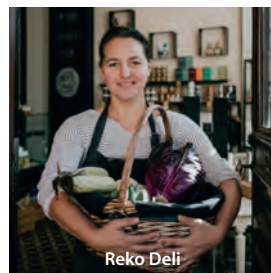


@visitlund



@visitlund

VISIT
LUND



Reko Deli



Lund Cathedral



Lek & Sak



Café in the Botanical Garden



Soup restaurant Buljong



Broder Jakobs Stenugnsbageri



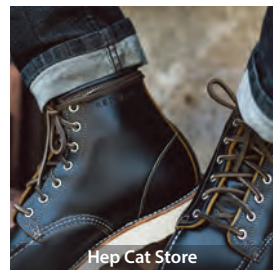
Alfredo Pasta Saluhallen



Ostabengtson



Lexis Papper



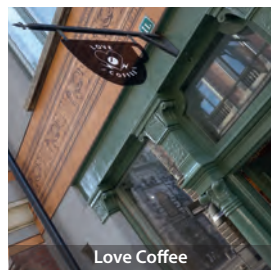
Hep Cat Store



Tehuset Java



Skomakaren Henry



Love Coffee



Ahlgrens Konfektyr



Klostergatans Vin & Delikatess



Malmstens fisk, Saluhallen



**LUND
CITY**
SAMVERKAN



COPENHAGENCARD

SEE MORE. PAY LESS.



GET YOUR
COPENHAGEN
CARD ON
YOUR
SMARTPHONE



Free access to 87
museums and
attractions

Free transport by train,
bus and Metro
in the entire
metropolitan area

One adult can bring
along 2 children
under the age of
10 for free

WWW.COPENHAGENCARD.COM

VISIT
COPENHAGEN



MUSEUMS & COLLECTIONS

Our full catalogue of museums and collections in Copenhagen lets you browse between heritage palaces, art museums and grand parks in the city and beyond.

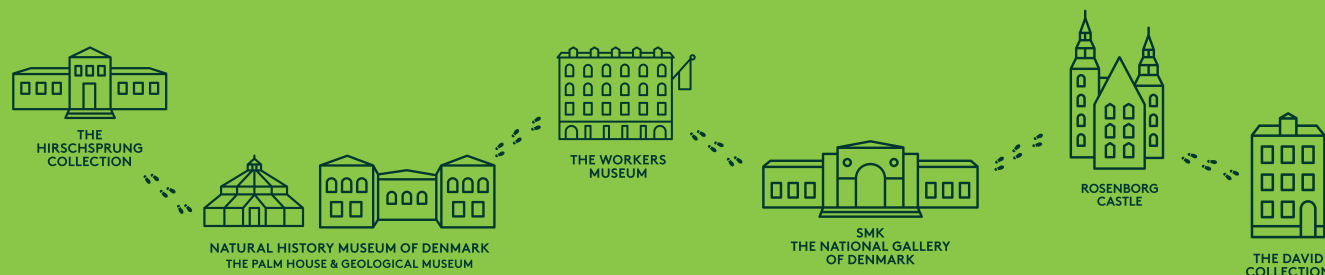


MUSEUMS & COLLECTIONS

Our full catalogue of museums and collections in Copenhagen lets you browse between heritage palaces, art museums and grand parks in the city and beyond.

1 TICKET 6 MUSEUMS 50% DISCOUNT

ONE YEAR - SIX VISITS



ROSENBERG CASTLE

A royal hermitage set in the King's Garden in the heart of Copenhagen, Rosenborg Castle features 400 years of splendor, royal art treasures and the nation's well-guarded Crown Jewels and Royal Regalia.

Rosenborg Castle was built by one of the most famous Scandinavian kings, Christian IV, in the early 17th century. Christian IV fathered more than 20 children, was a patron of the arts and built some of the most significant buildings in Copenhagen. Of his many castles, Rosenborg became his favorite.

Today, the glory of the past can be experienced through the impressive possessions of

Christian IV and his descendants. Among the main attractions is the Great Hall with the coronation thrones and three life-size silver lions standing guard.

The king's coronation throne is made of narwhale tusk with gilt figures, while the queen's is of silver. Tapestries on the walls commemorate battles between Denmark and Sweden.

The interiors are well-preserved and invite the visitor to take a journey in time. The visitor can experience the king's private writing cabinet, his bathroom, and see wax figures of former royal inhabitants. Rosenborg also houses an exquisite collection of Flora Danica and one of the world's finest Venetian glass collections, both set in tower chambers.



The crowns of the Danish kings and queens are kept in special vaults with access from Rosenborg's basement. The crowns are embellished with table-cut stones, enamel and gold ornamentation. They were last used for coronations in 1840.

The crown jewels are living treasures, as they are the only ones in the world which are both displayed to the public and in royal use, by HM Queen Margrethe. They primarily consist of four garnitures: a brilliant set, a rose-cut diamond set, a ruby and pearl set and an emerald set – the emeralds being among the world's finest.



The Great Hall at Rosenborg Castle.

SMK National Gallery of Denmark



Photo: Ida Høytrup

SMK (Statens Museum for Kunst) is the National Gallery of Denmark and the largest art museum in the country. Here you can explore Danish and international art spanning more than 700 years, right from the early Renaissance to cutting-edge contemporary art. SMK also presents a wide range of special exhibitions, events, performances and concerts, and we invite children to get creative in our workshops and you to join us on one of our guided tours. We look forward to seeing you!

MASTERPIECES AND CUTTING-EDGE ART

The collections have their roots in the private collections of Danish kings, but now belong to the people.

SMK is especially famous for its collection of Danish Golden Age art, for the country's most comprehensive collection of Danish and international contemporary art, and for having one of the world's best Matisse collections. In the collections you can meet artists such as C.W. Eckersberg, Anna Ancher, Vilhelm Hammershøi, Franciska Clausen, Henri Matisse, Emil Nolde, Ursula Reuter Christiansen, André Derain, Rembrandt van Rijn, Peter Paul Rubens and Andrea Mantegna.

ARCHITECTURE AND SURROUNDINGS

SMK is located in the heart of Copenhagen between three historic parks – The King's Garden, The Botanical Garden and Østre Anlæg. The museum architecture merges the aesthetics of two different centuries and is an attraction in its own right. You will find the main entrance in the magnificent museum building from 1896, designed by the architect Vilhelm Dahlerup. From here you can access the modernist wing from 1998, designed by architect Anna Maria Indrio. The two buildings are united by a beautiful, high-ceilinged Sculpture Street where a glass roof allows natural light to flood the museum, causing the space to reflect the cycles of the day and the seasons.



L.A. Ring, *The Artist's Wife*, 1897
Statens Museum for Kunst © SMK Foto

SHOP AND KAFETERIA

Even if you don't have the time to view the exhibitions, you are always welcome to visit the SMK Shop and KAFETERIA. In the SMK Shop you can choose from a selection of art books, design products and gift articles. The KAFETERIA serves healthy, delicious lunches, cakes and some of the best coffee in Copenhagen. Free admission

SMK FRIDAYS

Explore SMK after hours and experience art in new and informal ways. SMK Fridays presents a new theme and programme each time, and you can always expect a great blend of art, music, performances, art talks, film screenings as well as drinks and street food. No advance booking required. Visit smk.dk for more information.

26. April

21. June

16.00–22.00

Free admission



SMK WEDNESDAY

Every Wednesday night, SMK invites visitors to have dinner, listen to art talks or take part in special events. A new programme is presented each week. See what's on next Wednesday at smk.dk

CHILDREN'S WORKSHOPS

Saturdays and Sundays 11.00–16.00. Free with standard admission ticket/SMK Annual Pass.



Exhibitions

Map page 147 30

9 February–5 May 2019

Sonja Ferlov Mancoba

In this spring's main exhibition, we pull one of the most important Danish Sculptors in recent times into the limelight: Sonja Ferlov Mancoba, who lived from 1911 to 1984.

Delve into the story of a person whose life was entirely interwoven with her art and explore the work created by this uncompromising artist – a realm full of poetic and ferocious beings, guardians and masks. Her sculptures testify to a lifelong interest in non-Western culture and carry an important message of community.

27 April–1 September 2019

There I belong

Hammershøi by Elmgreen & Dragset

An exhibition with works by the Danish painter Vilhelm Hammershøi and contemporary artists dealing with the notion of home compiled in collaboration with the artist duo Elmgreen and Dragset.

24 August–8 December 2019

Danish Golden Age

World-class art between disasters

Experience the largest exhibition ever presented about the Danish Golden Age! We tell the story of how one of the most creative periods in Danish art and culture came to arise, and how the artists of the Golden Age created those quintessential images of Denmark and Danish landscapes that we have known and idealized ever since.

8 February–24 May 2020

Anna Ancher

SMK presents the largest ever retrospective exhibition about the Danish painter Anna Ancher. Get up close and personal to the artist, her experimenting works and explore how she renewed Danish art.

OPENING HOURS

Tuesdays–Sundays 10–18 • Wednesdays 10–20
Mondays closed.

ADMISSION See smk.dk for more information.



Address:
Sølvgade 48–50
1307 Copenhagen
T: +45 3374 8494
www.smk.dk
smk@smk.dk
[smk@smk.dk](https://www.instagram.com/smkmuseum)
[#smkmuseum](https://www.instagram.com/smkmuseum)

NATURAL HISTORY MUSEUM OF DENMARK

Botanical Garden • Geological Museum • Zoological Museum



The Botanical Garden by the lake in front of the Victorian Palm House from 1874.
Photographer: Birgitte Rubæk.

From skeletons of prehistoric creatures over twenty-ton meteorites from outer space to endangered plant species – the Natural History Museum of Denmark offers a treasure trove of specimens collected over hundreds of years on expeditions to all corners of the world.

BOTANICAL GARDEN

The beautiful Botanical Garden is situated in the heart of Copenhagen. The historic garden is home to Denmark's largest scientific collection of living plants with about 11,000 species. The hothouses and the various sections of the garden feature all kinds of vegetation from carnivorous plants and spectacular orchids to rare cacti and cycads from the time of the dinosaurs. In the Victorian Palm House, you get to experience the rain-forest from above, and from May to September you can also visit the Butterfly House. The garden has a shop and an outdoor café that offers refreshments on sun blessed days.

Map page 147 **43**



ACTIVITIES

Find information on guided tours, activities for children and other events at snm.ku.dk.



- [statensnaturhistoriskemuseum](https://www.facebook.com/statensnaturhistoriskemuseum)
- [@statensnaturhistoriskemuseum](https://www.instagram.com/statensnaturhistoriskemuseum)
- [@NHM_Denmark](https://twitter.com/NHM_Denmark)
- [#statensnaturhistoriskemuseum](https://twitter.com/NHM_Denmark)

GEOLOGICAL MUSEUM

Take a stroll through the Botanical Garden to the Geological Museum where you can experience the impressive mineral halls, touch a 20-ton meteorite and explore the world of nature in the changing special exhibitions. Do not miss the exhibition *Butterflies – nature's silent messengers* that tells the story of climate change and the ongoing loss of species. From 13 April to 1 September 2019, the exhibition *Fashioned from Nature* will challenge you to rethink your wardrobe and invite you to dive into 400 years of colourful fashion history with exclusive dresses from the Victoria and Albert Museum, London, displayed side by side with colourful beetles, a huge whale skeleton, precious gems and other fascinating specimens from the collections of the Natural History Museum of Denmark. In the fall, the exhibition *Meteorites* will take you to outer space. Visit the shop and bring home a piece of the experience.

Map page 147 **42**

ZOOLOGICAL MUSEUM

Explore natural history among musk oxen, whales and extinct species, or venture into the world of Charles Darwin in the exhibition on evolution. The 17-meters-long dinosaur 'Misty' is on display in the exhibition *Precious Things*, accompanied by a range of the museum's most beautiful and valuable treasures. In the Natural History Laboratory, you can study insects under a microscope, handle stuffed animals and assemble a real skeleton. The museum features a shop and activities for the whole family.

Opening hours: See page 103, 104, 108.

BOTANICAL GARDEN AND
GEOLOGICAL MUSEUM ARE PART OF

PARK
MUSEERNE

Map page 145 F6

SPECIAL EXHIBITION

Fashioned from Nature

GEOLOGICAL MUSEUM

13 APRIL – 1 SEPTEMBER 2019

The exhibition explores the fabric of fashion and highlights fashion's dependence on the riches of nature

fashionedfromnature.dk

THANK YOU TO

MANUFATURHANDLERFORENINGEN
I KØBENHAVNS ALMENE FOND

NATURAL
HISTORY MUSEUM
OF DENMARK

UNIVERSITY OF
COPENHAGEN



Map page 147 **42**



Embroidered silk waistcoat, France, 1780 – 9. Image: Vee Speers © V&A

Fashioned from Nature is based on an exhibition created by the Victoria and Albert Museum, London

THE DAVID COLLECTION

Davids Samling

The home of one of the world's finest collections of Islamic art and of unique collections of European and Danish art.

*Miniature. "Portrait of a Rohilla Afghan." Northern India, 1821-1822.
Photo Pernille Klemp*



Located in the heart of Copenhagen across from the King's Gardens, the David Collection offers an inspiring atmosphere of elegant nineteenth-century interiors and fine collections of furniture, porcelain, silver, and works by renowned Danish artists, from Golden Age painters Jens Juel and Christen Købke to the internationally acclaimed Vilhelm Hammershøi. Then enter a completely different cultural sphere through one of the world's most significant collections of Islamic art.

THE SWEEP OF HISTORY

The David Collection was founded in 1945 in the home of Christian Ludvig David (1878-1960), a lawyer who collected European fine and applied art from the seventeenth and eighteenth centuries as well as Islamic art from the seventh to the nineteenth century. Since the death of C. L. David, the foundation that he created has continued to expand the collections – particularly that of Islamic art.

THE COLLECTIONS

The museum comprises three permanent collections.

ISLAMIC ART

The internationally acclaimed collection of Islamic art is among the world's most important. On display is art from the Islamic cultural sphere: ceramics, textiles, glass, metalwork, and paintings from Spain in the west to India in the east. The impressive collection takes you on a magical quest through 1,200 years of art history.

From Firdaws's Shahnama. "A Princely Couple with Courtiers in a Garden." Western Iran or Iraq, beginning of the 15th century. Photo Pernille Klemp



*Fritware bowl. Minai type. Iran, Kashan, c. 1200.
Photo Pernille Klemp*

EUROPEAN EIGHTEENTH-CENTURY ART

The collection of European eighteenth-century art is displayed in period rooms furnished and decorated with porcelain and silverware to offer an impression of a 200-year-old private residence.

DANISH EARLY MODERN ART

The collection of Danish early modern art (1880-1950) was curated by C. L. David himself. It consists of sculptures, ceramics, and paintings by such masters as Vilhelm Hammershøi and J. F. Willumsen. From May 24, 2019, a special exhibition "Philipsen to Salto – Revisiting the Modern Danish Collection" is on display until autumn 2020. The entire museum's works by Vilhelm Hammershøi (1864-1916) can be seen until December 2019, at which time they will be on loan to museums in Japan.

- Admission to the museum is free.
- Guided tours in English every Saturday from June through August.
- Several special exhibitions each year.

Opening hours: See page 130.

Map page 147 **3**



C. W. Eckersberg. "Ida Mariane Brockenhuus," 1817. Photo Pernille Klemp

OPENING HOURS

TUESDAY TO SUNDAY 10-17

WEDNESDAY 10-21

MONDAY CLOSED

PARK
MUSEER
NE



DAVIDS SAMLING

WWW.DAVIDMUS.DK

THE HIRSCHSPRUNG COLLECTION

Den Hirschsprungske Samling



Christen Købke:
Portrait of the
landscape painter
Frederik Sødring,
1832

Inspiring art in a green Copenhagen parkland

The Hirschsprung Collection is an art museum in a class of its own, representing Danish art from the nineteenth and early twentieth centuries, and spanning the period from the Danish Golden Age to the Skagen painters and the advent of Modernism. The collection includes masterpieces by C.W. Eckersberg, Christen Købke, P.S. Krøyer, Anna Ancher og Vilhelm Hammershøi.

Founded by Heinrich Hirschsprung, the collection was donated to the Danish state in 1902.

Hirschsprung was a tobacco manufacturer of German-Jewish descent and his great interest in contemporary art made him an ardent collector and a leading patron of the arts. He and his wife, Pauline, were an influential force within Danish art.

The museum building is a magnificent example of Neoclassicism where the salon galleries create an intimate atmosphere.

Opening hours: See page 131.

Map page 147 **34**



ACTIVITIES

The museum hosts temporary exhibitions, events, activities for children and guided tours.



Vilhelm Hammershøi: Bedroom, 1890

19TH CENTURY DANISH ART

www.hirschsprung.dk
Stockholmsgade 20-21.00 Cph Ø
Open: Wed-Sun 11.00-16.00.
Open until 20.00 on selected Thursdays
Monday and Tuesday closed.
Closed 23-26 & 31 Dec & 1 Jan.
May be closed due to changing exhibitions.
Check website

Admission: Adult: DKK 95. Under 18 free.
The Parkmuseerne ticket: DKK 245.



MEDICAL MUSEION

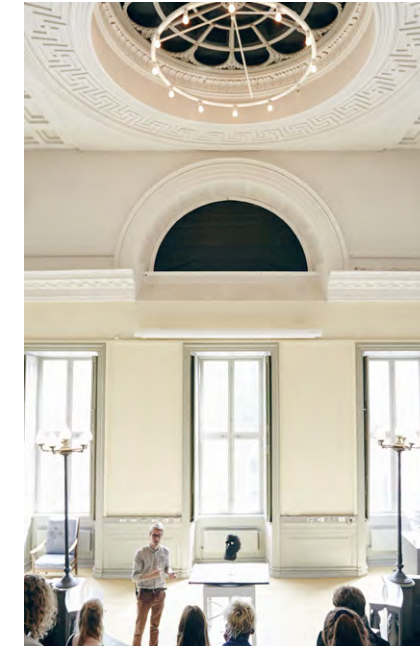
Medicinsk Museion

A *must see* museum for all who are curious about the human body and mind, disease and health.

Medical Museion is a museum of medical history and culture located in the historical Royal Academy of Surgeons (from 1787). Here medical students once attended lectures and demonstrations in the magnificent Neoclassical auditorium. Today the exhibitions take you on a journey through the world of medicine from historical understandings of the body to current challenges in public health.

Medical Museion is for everybody who is curious about how the human body and mind have been understood and treated – from Antiquity to the age of the gene.

The auditorium at the Royal Academy of Surgeons.



Map page 147 **40**

From the exhibition "The Body Collected".



Explore the beautiful
exhibitions on your own
or on one of our
daily guided tours
(included in admission fee).

Tuesday-Friday
10 am – 4 pm

Saturday-Sunday
12 pm – 4 pm

For more information visit
museion.ku.dk

Bredgade 62, 1260 Cph K





Glyptoteket

An Oasis in the Heart of Copenhagen

Ny Carlsberg Glyptotek
Dantes Plads 7 • 1556 Cph

glyptoteket.com

Map page 147 **6**

THE NATIONAL MUSEUM

Meet The Danes and the Vikings at the National Museum of Denmark and experience world-famous treasures with a starring role in Danish history! Welcome to the largest museum of Danish culture and history – right in the heart of Copenhagen

MEET THE DANES

Take a guided tour with a Dane and get a local's personal view on Danish cosiness, happiness and life-work balance. Are Danes really the happiest people in the world? How does the Danish royal family manage to be so popular? Why are there so many cycles in Denmark? Why on earth do Danes think it's safe to leave their babies sleeping in prams on the street while they are in a café? What is that famous Danish liberal-mindedness all about?



MEET THE VIKINGS

The National Museum's new and very popular exhibition: Meet The Vikings welcomes visitors to the multifaceted universe of the Vikings. The exhibition includes one of Denmark's largest treasure troves of gold and silver jewellery. Join a guided tour and learn more about myth and facts about our famous ancestors.

FOR CHILDREN

Let the kids hunt for the hidden magical button. Anything can happen when they press it. Stat-

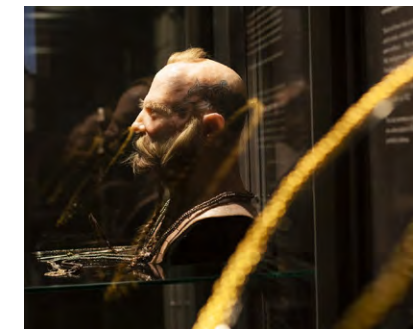
ues turn to life, dragons spit fire and ancient skeletons break wind!

You can also visit the Children's Museum, an indoor playground where children can sail across the sea in a Viking ship or cook in the old kitchen. This is a museum where kids can touch absolutely everything!

EAT FOOD

With clear references to classic lunch and local dishes, the museum's restaurant serves new interpretations of Danish food.

Map page 147 **10**

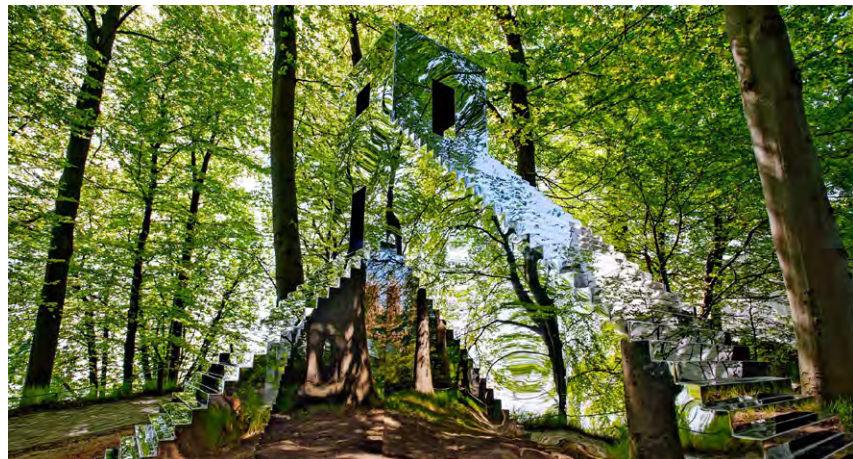


ADMISSION

Day Ticket Adult: DKK 95
Family Ticket (1 child + 1 adult) DKK 80
Child under 18 is free

OPENING HOURS

October-May:
Tuesday-Sunday: 10.00-17.00
June-September:
Monday-Sunday: 10.00-18.00



Not Vital's 'House to Watch the Sunset' from 2015 in the Sculpture Park. Part of the Louisiana Collection. Anonymous donation. Louisiana Museum of Modern Art. Photo: Kim Hansen.

LOUISIANA

Museum of Modern Art

Louisiana is often hailed as “the most beautiful museum in the world”. Here you find a combination of world class art, nature and architecture that is truly unique and unforgettable.

Unlike most of the large museums of this world Louisiana is not situated in the city centre, next to the theatre or the opera. It is the destination of an excursion. When you have arrived, you move through one intimate gallery after the other, taking in new impressions along the way inside and outside in the wonderful park facing the coastline. In fact this interplay between art, architecture and nature, is a principle at Louisiana.

OPEN UNTIL 22:00 FROM TUESDAY-FRIDAY

Louisiana is more than a museum. It is also a dynamic framework for concerts, lectures, conferences and encounters with artists.

THE TEMPORARY EXHIBITIONS

Louisiana offers a rich and internationally acclaimed exhibition program, taking both a fresh look at 20th-century classics as well as new developments in contemporary art. The interaction of the arts plays an important role at Louisiana, and major exhibitions are regularly devoted to architecture, photography and cross-cultural themes.

THE PERMANENT EXHIBITION

The collection, which is shown in varying displays, includes significant chapters in 20th century art history. The art of Alberto Giacometti is one of the museum's distinct fields of force as is the art of Alexander Calder whose sculptures have almost

become a symbol of Louisiana, and Henry Moore who has contributed unmistakably to the character of the park with its view of the Sound. Not to mention Picasso, Dubuffet, Warhol, Rauschenberg, Klein and many others.

A MUSEUM FOR ALL AGES

For children the great attraction is the Louisiana Children's Wing with its adjacent Lake Garden and a wealth of activities. The Louisiana Café has one of the most beautiful views in Denmark, and offers sandwiches, refreshments and in-season, Nordic buffet menu. One of the very best design shops in Denmark, the Louisiana Shop offers design products, fashion, accessories, books, posters and much more.

OPENING HOURS

Tuesday – Friday 11-22
Saturday – Sunday 11-18
Closed on Mondays

Gl. Strandvej 13
DK-3050 Humlebæk
www.louisiana.dk



The Panorama Room. Louisiana Museum of Modern Art. Photo: Ulrik Jantzen.



Alberto Giacometti's 'Homme qui marche' in the Giacometti Gallery. Louisiana Museum of Modern Art. © Succession Alberto Giacometti/VISDA 2019. Photo: Kim Hansen.



Dan Graham's 'Square Bisected by Curve' from 2008 in the Sculpture Park. Part of the Louisiana Collection. Acquired with support from Nørgaard paa Strøget. Photo: Kim Hansen.



The Calder Terrace. Louisiana Museum of Modern Art. Photo: Bjarke Ørsted

Map page 80 **8** Map page 145 F3

EXHIBITIONS 2019

Dea Trier Mørch
Into the World
Louisiana on Paper
Until 28 April

Pipilotti Rist
Åbn min lysning
(Open My glade)
1 March – 23 June

Liu Xiaodong
Expedition to Uummannaq,
Greenland
21 March – 10 June

Birgit Jürgenssen
Ich Bin / I am
Louisiana on Paper
13 June – 22 September

Homeless Souls
27 June – 15 September

Lauren Greenfield
Generation Wealth
22 August 2019 – 26 January 2020

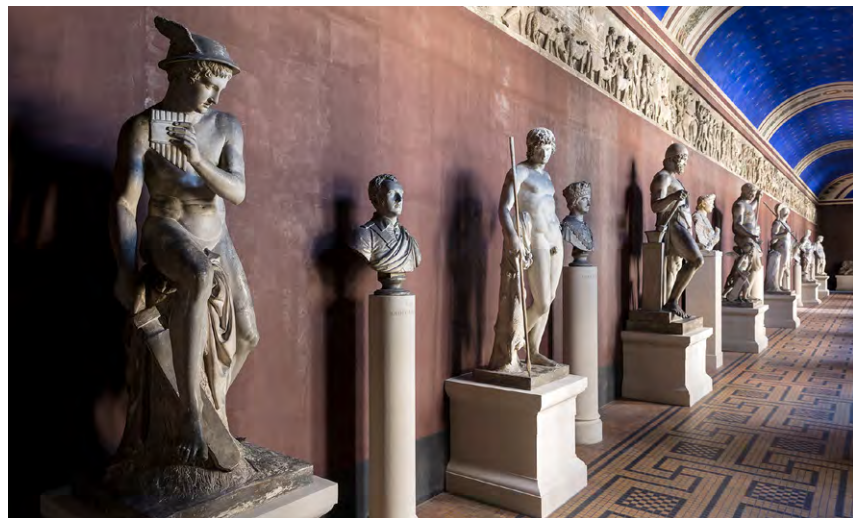
Marsden Hartley
19 September 2019 – 19 January 2020

Tatiana Bilbao
The Architect's Studio
11 October 2019 – 2 February 2020

Dates are subjects to change. For updates and information please visit www.louisiana.dk. For videos on the arts see www.louisiana.dk/channel.

THORVALDSENS MUSEUM

The epitome of Neoclassical genius



South Corridor. Photo: Sarah Coghill

Thorvaldsen's Museum opened to the public in 1848 as the first Danish art museum – and it still looks today as it did back then. The museum is dedicated to the Neoclassical art of Danish sculptor Bertel Thorvaldsen (1770- 1844) and is also home to his private collections, including paintings by his contemporaries, vases and statues from Antiquity, as well as rare books, coins and much more.

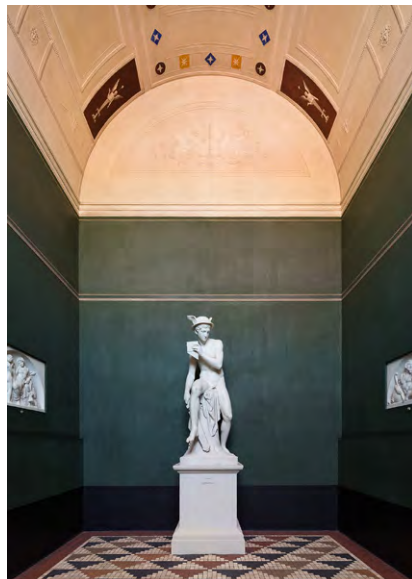
A fascinating combination of architecture and sculpture, the museum, designed by M.G. Bindsbøll, offers a flow of mosaic patterns as you walk from room to room. The colour-saturated interiors alternate between hues of green, red and yellow. And the ceilings are all individually styled, drawing inspiration from famous buildings of ancient Rome and Pompeii.

Opening hours: See page 133.

Map page 147 **37**



Venus with the Apple. Photo: Ole Woldbye.



Mercury. Photo: Sarah Coghill



THORVALDSEN'S WORKS AND HIS COLLECTIONS

Bertel Thorvaldsen Plads 2
1213 Copenhagen K
Tel.: +45 33 32 15 32

E-Mail: thm@thorvaldsensmuseum.dk
Web: www.thorvaldsensmuseum.dk

Daily 10-17
Monday closed

COPENHAGEN CITY HALL

Castle of the citizens

Map page 147 **28**



Visit Copenhagen City Hall, built in the years 1892-1905. The architect Martin Nyrop was part of the great Arts and Crafts movement and just as Gaudi in Barcelona he created everything from keys, doorknobs to the tower. Take a guided tour or visit the tower, a historic landmark celebrating the Danish constitution from 1849. From the tower there is a great view, overlooking the old city and on a clear day you can see even as far away as the coast of Sweden.

The City Hall was designed by Danish architect Martin Nyrop (1849-1921) and although he was influenced by the political changes in continental Europe, he also brought the Scandinavian traditions and the Danish to life in his creative work; really it is a poetic tale of how the city of



Copenhagen came to be. The City Hall houses the Lord Mayor and the central administration. The 55 members of the council are still having their meeting in the beautiful City Hall Council Chambers, in the very heart of the city.

THE CITY HALL OFFERS A RANGE OF TOURS:

MONDAY-FRIDAY:
THE TOWER
DKK 30 • 11am and 2pm

MONDAY-FRIDAY:
GUIDED TOURS
DKK 50 • in Danish at 10am
and 3pm • in English at 1pm

SATURDAY:
THE TOWER
DKK 30 • 12 noon

SATURDAY:
GUIDED TOURS
DKK 50 • in Danish at 11am
in English at 10am

Tickets are sold at the information office at the main entrance. No reservation required. Credit cards and CPH card accepted for the Tower.

It is also possible to book special tours in English or Italian, including The tours last approximately 1-2 hours and include the famous City Hall Pancake and a glass of sparkling wine. For further information email us at Rundvisning@kk.dk or call +45 33 66 25 86

ROYAL DANISH LIBRARY

The national library dates back to the 17th century. Today it is much more than a library

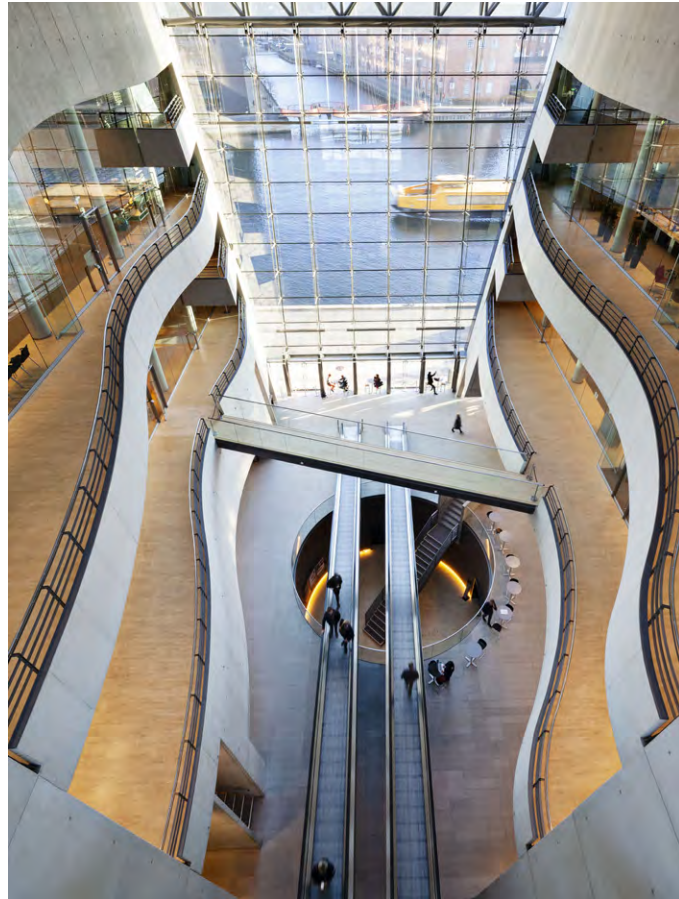
Explore the spectacular architecture, take a break with barista coffee in the café or enjoy a gourmet meal in the restaurant with a splendid view of the harbour canal – The Black Diamond is the contemporary waterfront extension to the Royal Danish Library.

An installation by world-famous performance artist Marina Abramovic shows gems from the library collections - Northern Europe's largest collections of rare books and manuscripts (booking required). Also check out the changing exhibitions of photography and cultural history or live music and author talks in the stylish Queen's Hall.

Guided tours Mondays at 3 pm or by prior arrangement.

Opening hours: See page 133.

Map page 147 **39**



THE KAREN BLIXEN MUSEUM

Rungstedlund

The museum, with a lovely park and bird reserve, is situated north of Copenhagen overlooking the sea



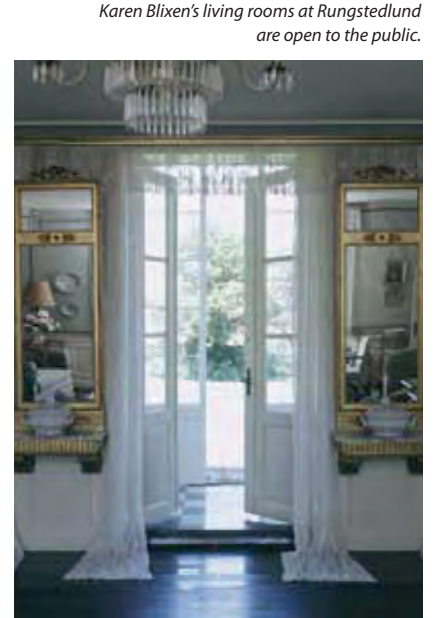
Karen Blixen is one of Denmark's greatest literary figures. Many people will know her from her books 'Out of Africa' and 'Babette's Feast' which both were turned into Oscarwinning movies.

Karen Blixen was born at Rungstedlund where she lived most of her life except for the 17 years she spent in Kenya, and she is buried in the park behind the museum.

Cozy café with a beautiful view.

Opening hours: See page 134.

Map page 145 F4 Map page 80 **9**



Karen Blixen's living rooms at Rungstedlund are open to the public.

RUDOLPH TEGNER MUSEUM AND STATUEPARK

A single artists passion in a fusion of sculpture, architecture and nature



Discover a talented Danish artist Rudolph Tegner (1873-1950) who fought in the shadows of the naturalism to find an expression that would move the viewer and take danish sculpture to a new level. The heretage of Auguste Rodin and Michelangelo is obvious in the artist early years..

He build his own museum in a peculiar area on the northcoast of Sealand covered by heath and founded his Statuepark here with 14 beautiful sculptures raised against the sky with a backdrop of heath and coastline. The museum points toward the modernism built in concrete in the same years where Arne Jacobsen made his famous buildings in Denmark and is considered amongst the 100 most important danish buildings.

The museum contains more 250 of the artist's other works in plaster, clay, marble and bronze. After his death in 1950 Tegnors body was buried beneath the floor of the museum's 11 metre tall main hall.

Have a unique experience visiting this museum and its surroundings. The Statuepark is open all year (free admission). The museum is open in summer from 15th of April until 20th of October www.rudolphtegner.dk.

Rudolph Tegner Museum and Statuepark
Museumsvej 19, Villingørød, 3120 Dronningmølle
www.rudolphtegner.dk

Opening hours: See page 135



Exhibitions
The Northcoast Art Triennale presents from 22 of June to October 20th 2019 under the subject Heritage:
"Tovborg and the heritage of Tegner – the god and its creators" an exhibition by Alexander Tovborg

"A Hymn over the Arch of Life" a soundinstallation by Tim Hinman/Third Ear
"Rudolphs onions" an artwork in the statuepark by Sophia Kalkau

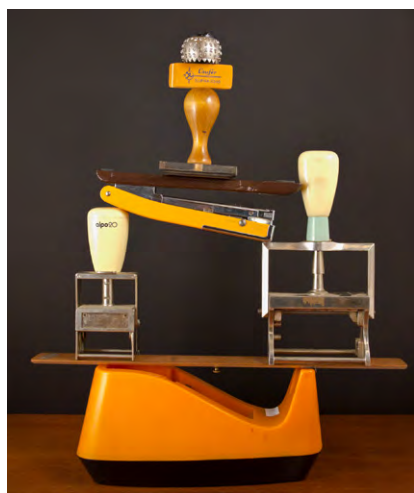
Map page 145 E1



KØS

KØS is Denmark's only museum of art in public spaces – and one of only very few museums of its kind in the world. KØS presents, mediates and discusses art created for urban settings, schools, workplaces, churches and landscapes across the country. Presenting a succession of international and national special exhibitions and dissemination activities, KØS calls attention to how art in public spaces can foster participation and create meaningful encounters between the realm of art and the general public. Through its research, exhibitions and discussion events, KØS contributes to informing and distilling the often heated debate on art in public spaces.

From 11 April, KØS will place the most recent developments in public art firmly on the agenda with the exhibition project FUEL. The exhibition presents a range of international art projects that have, in the last decade or so, changed our notions of what art in public spaces can be, fuel-



Lasse Krog Møller, *Bureaukratiske apparater*, 2015, photo: Lasse Krog Møller, Courtesy: The artist



Alex Hartley, *Nowhereisland*, 2012 © Situations, photo: Max McClure

ling new, engaging and relevant meetings between the general public and contemporary art. Art in public spaces is seeing rapid development internationally. In Denmark as elsewhere, art is now more emphatically present than ever in many settings: at festivals, in urban spaces, as startling and sensuous elements in the various institutions of the welfare state, and as investments helping to further a particular ambience or activity in urban settings. As ever, public art prompts many discussions about its value and purpose. But what is so special about this kind of art – art that can be found all around us in everyday life, in the places we visit, pass through, work, live and breathe? And how does it affect us as a society?

On 24 and 25 May, KØS joins Vallekilde Højskole and Ungdomsbureauet for the third year in a row to present the Røst Festival – Denmark's first oratory festival for young people. Come and view a massive turnout of young speakers, art, debate and music in the square in front of KØS. Visit roest.dk for more info.

In the autumn, KØS will present the exhibition 'the other city', where Danish artist Lasse Krog Møller engages the museum's collection in new conversations. In his works, the artist takes a documentary look at various surprising and fascinating qualities of everyday objects we generally tend to overlook. Lasse Krog Møller's found objects from urban spaces will join select-



Røst Festival at KØS, 2018, photo: I DO ART Agency

ed works from the museum's collection of preparatory works for public urban projects, thereby unfolding a multifaceted narrative about 'the other city' as a vision and as a potentiality.

Finally, visitors can enjoy the acclaimed Danish artist Bjørn Nørgaard's designs for the Queen of Denmark's tapestries – a particular highlight in the permanent collection. These full-scale drawings present vivid tableaux from 1,000 years of Danish history.

KØS offers a museum café and shop. The museum is located just a two-minute walk from Køge station (40 minutes from Copenhagen).

Map page 145 D8

Opening hours: See page 135.



MARITIME MUSEUM OF DENMARK

M/S Museet for Søfart



The Maritime Museum of Denmark has been called 'A cutting-edge cultural venue' by The New York Times and 'One of the eight greatest new museums' by the BBC.

With a dramatic and inspired setting next to Hamlet's castle in Elsinore just north of Copenhagen, the Maritime Museum of Denmark invites visitors to dip into the nation's seafaring history from the early renaissance to the present. Follow the sloping bridges down to an underground maritime world with a range of exhibitions presented in evocative and dramatic settings. Stand face to face with a torpedo, get tattooed with original sailor tattoos and see the world's biggest model of a container ship!

Children can play on THE DREAM SHIP – a maritime universe with plenty of space to run, play and experience the maritime.

The spectacular museum is built around an old dry dock of the Elsinore shipyard and is designed by the internationally acclaimed BIG - Bjarke Ingels Group.

The museum café is serving barista-grade coffee, local specialities and refreshments, and for those looking for a unique keepsake the museum shop features a wide selection of nautical inspired items.



FOR MORE INFO VISIT:

www.mfs.dk

FOLLOW US ON:

Facebook www.facebook.com/mfsdk

Instagram @maritimemuseumdenmark

Map page 145 G2 Map page 80 **13**



THE ØRESUND AQUARIUM

Near by Hamlet's Castle in Elsinore

Feel and touch the magnificent wildlife of Øresund at Denmark's cosiest saltwater aquarium – just 45 minutes from Copenhagen.

The Øresund Aquarium displays the amazing world of local marine life in the waters between Denmark and Sweden called the Sound (Øresund). Join us on a adventure below the surface and explore the diverse and unique flora and fauna. In our habitat aquaria you can meet our octopus, sharks, rays and colourful fishes – all living in Danish waters. You can experience our animals up-close at the aquarium's touch pools - hold a starfish, pet a flatfish and touch a ray. All day the quarium guides are ready with interesting stories and every hour we feed the animals.

We offer a wide range of year-round marine activities for the whole family. During the summer months you can join guided activities, such as crab fishing at the harbor and beach seining. Or you can join whale watching, bird watching and snorkeling from our large RIB boat.

The Øresund Aquarium is part of University of Copenhagen.

Read more at www.oresundsakvariet.ku.dk

Opening hours: See page 136.



Photo: Tania Lundberg Lykkegaard



Photo: Tania Lundberg Lykkegaard



Map page 145 F2 Map page 80 14

THE VIKING SHIPS IN ROSKILDE

Vikingskibsmuseet



Authentic Viking ships and a scenic Museum Harbour – watch the work at the Boat yard and try sailing like a Viking on one of the daily boat trips from 1 May – 30 September.

From May 1st – October 20th you can join one of the free tours of the original five Viking ships in Danish or English Language.

MUSEUM HARBOUR

Just outside the Exhibition Hall you will find true replicas of the five Viking ships moored in the Museum Harbour side by side with the Museum's large collection of traditional, Nordic wooden boats.

At the Museum Island you can visit the Museum's Boatyard where the skilled Boat Builders reconstruct 1,000-year-old ships using ancient methods and copies of the Viking's tools.

From 1 May to 20 October you will meet various craftsmen and women, such as the rope maker, sail maker, blacksmith or woodcarver. Check the daily schedules at www.vikingshipmuseum.dk.

During high season – daily from 29 June to 25 August – children can discover their inner Viking by joining the Vikings' Workshops and try their hand at Viking craftwork and embark on one of the free family tours in Danish or English involving both children and adults.

Several other activities are staged throughout the year. During the summer season and in all Danish school holidays, the Museum highlights different themes of the Viking's maritime life.

To be updated on current events and special exhibitions, please check out the daily schedules at www.vikingshipmuseum.dk.

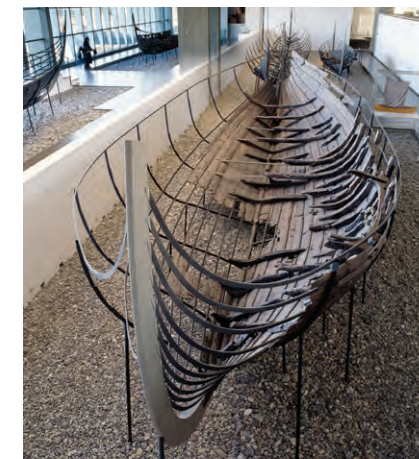
SAIL AND DINE LIKE A VIKING!

What could be more inspiring than sailing on a Viking ship? The daily voyages between 1 May and 30 September are open to everyone aged 4 and up at an additional fee of DKK 120. Tickets can be bought in the ticket office on the day after 'first come first served' principle.

Sailing is also a great way to work up an appetite. Try New Nordic Viking with flavours from the Vikings' Cuisine at the Café Knarr located at the Museum Island next to the Boat Yard. The ancient Viking diet is reinterpreted using local produce and served as modern, season-related dishes.

You are also welcome to enjoy a picnic on the lawns.

The Michelin Guide has awarded the Viking Ship Museum in Roskilde its highest rating – three stars: an attraction worth the trip!



TRANSPORT:

Free car park. Or take the train to Roskilde (20 minutes from Copenhagen Central Station). Change to bus route 203 or walk about 25 minutes.

Map page 145 C7

Opening hours: See page 136.



COPENHAGEN

Map references No.

Alhambra – museum of humor and satire

Allégade 5, 2000 Frederiksborg
Tel. (+45) 38 10 20 45, www.revymuseet.dk
Metro Frederiksberg.
Bus 6A, 8A, 9A, 26.
Map page 145 F7
See also page 77..

DESCRIPTION

Opening hours and admission

Danes value humor. Alhambra tells the story of 150 years of entertainment history and Danish history through some of Danish theater's greatest stars and the theatres they performed at.
Open: All year Wed-Thu 12 am-7 pm. Fri-Sun 11 am-4 pm. Monday closed.
Admission: Adult DKK 50. Child free (0-17). Students and seniors (+65) DKK 40.



Amalienborg, Christian VIII's Palace and Christian VII's Palace

Gate on the left when coming from Frederik's Church
Tel. (+45) 33 12 21 86, amalienborg.dk
Metro: Kgs. Nytorv.
Bus 1A, 20E, 26, 350S.
Map page 147 no. 13. See also page 63.

Experience the monarchy through the last 150 years in the museum in Christian VIII's Palace. Take a guided tour of Christian VII's Palace and see the magnificent rooms where official festivities are held.
Open: Christian VIII's Palace: 1 Jan 11-19. 2 Jan-30 Apr Tues-Sun 10 am-3 pm. 1-31 May daily 10 am-4pm. 1 June-31 August daily 10 am-5 pm. 1 Sep-31 Oct daily 10 am-4 pm. 1 Nov-31 Dec Tues-Sun 10 am-3 pm.
Book tours of Christian VII's Palace on amalienborg.dk or in the ticket office in Christian VIII's Palace.
Admission: Adults 95 DKK. Groups (min. 12 pers.) 85 DKK. Children (0-17): free. Students: 65 DKK.

Hans Christian Andersen's Fairytale House

Rådhuspladsen 57, 1550 København V
Tel. (+45) 33 32 31 31, www.ripleys.dk
Train and S-train to Copenhagen Central Station.
Bus to Town Hall Square 2A, 5A, 6A, 10, 12, 14, 26, 33, 250S.
Map page 147 no. 17. See also page 69.

A multi-sensory experience: Walk through the enchanting fairy tales of Hans Christian Andersen and learn about his life.
Open: 15 Jun-31 Aug daily 10 am-10 pm. 1 Sep-14 June Sun-Thurs 10 am-6 pm. Fri-Sat 10 am-10 pm. 24, 25 & 31 Dec 10 am-4 pm, 1 Jan 12 am-6 pm.
Tickets sale closes an hour before.
Admission: Adult DKK 60. Child (4-11) DKK 40. Child (0-3) free.
Save money with a Fun Pass for all four attractions: Adults DKK 215, children DKK 130.

Bakkehuset

Rahbeks Allé 23, 2000 Frederiksberg
Tel. (+45) 33 31 43 62, www.bakkehusmuseet.dk
S-train Carlsberg. Metro Frederiksberg.
Bus 4A, 6A, 8A, 26.
See page 145 F7.
See also page 77.

Museum of literature and cultural history from the Danish Golden Age. Exhibitions and authentic interiors. On show in 2019: Women who write (Jane Austen a.o.). Historical garden from Kamma Rahbeks era. Orangery serving coffee, tea, cakes and lunch meals.
Open: Tue-Sun 11 am-5 pm. Monday closed. Closed from September 1.
Admission: Adult DKK 50. Child (0-17) free. Students and seniors (+65) DKK 40.

The Black Diamond see Royal Danish Library

Botanical Garden – Botanisk Have

Gothersgade 128, 1123 Copenhagen
Tel. (+45) 35 32 22 22, www.BotanicalGarden.dk
Metro, trains and S-trains to Nørreport Station.
Bus no. 5A, 6A, 11A, 350S, 14, 40, 42, 43, 184 and 185.
Map page 147 no. 43. See also page 110-111.

The beautiful Botanical Garden is situated in the heart of Copenhagen's green museum district. The historic garden is home to Denmark's largest scientific collection of living plants from rare orchids to cycads from the time of the dinosaurs. The garden has a shop and an outdoor café that offers refreshments on sun blessed days.
The Botanical Garden is part of the Natural History Museum of Denmark.
Opening hours in the garden: Summer: 1 April - 30 Sept. every day 8:30 am-6 pm. Winter: 1 Oct. - 31 March every day 8:30 am-4 pm.
Opening hours in the Palm House: Summer: 1 April - 30 Sept. 10 am-5 pm. Monday closed. Winter: 1 Oct. - 31 March 10 am-3:30 pm. Monday closed. From May to September you can also visit the Butterfly House within the opening hours of the Palm House. For special opening hours during holidays, please visit www.BotanicalGarden.dk.
Admission to the Botanical Garden: Free
Admission to the Palm House: Adult 60 DKK / Child (3-17 years) 40 DKK.



COPENHAGEN

Map references No.

Christiansborg Palace Chapel

Christiansborg Slotsplads
Tel. (+45) 33 92 64 92, christiansborg.dk
Bus 1A, 2A, 9A, 15, 26, 29, 66. Harbour Bus 901, 902. Metro Kongens Nytorv.
Map page 147 no. 21. See also page 64-65.

DESCRIPTION

Opening hours and admission

The Palace Chapel is used for ceremonies and services for members of the royal family. The Palace Chapel from 1826 is in Neoclassicist style. The entrance looks like a Greek temple. The interior is more informal with walls decorated in stucco marble - the finest marbling technique in the world.
Open: Sun 10 am-5 pm. July: daily 10 am-5 pm. Always check christiansborg.dk for today's opening hours before your visit.
Admission: Free.

Christiansborg Palace – The Royal Kitchen

Christiansborg Palace
Tel. (+45) 33 92 64 92, christiansborg.dk
Bus 1A, 2A, 9A, 15, 26, 29, 66. Harbour Bus 901, 902. Metro Kongens Nytorv.
Map page 147 no. 20. See also page 64-65.

In 2016, the legendary Royal Kitchen at Christiansborg was restored to its former glory. The Royal Kitchen under Christiansborg Palace is equipped and furnished as it was in the days of Christian X, boasting one of Europe's largest collections of copperware. See, feel, smell and hear the preparations for king's Silver Jubilee in 1937.
Open: Daily 10 am-5 pm. Mondays closed November-March. Always check christiansborg.dk for today's opening hours before your visit.
Admission: Adults DKK 60. Students DKK 50. Children under 18: Free.



Christiansborg Palace – The Royal Reception Rooms

Christiansborg Palace, Prins Jørgens Gård 5
Tel. (+45) 33 92 64 92, www.christiansborg.dk
Bus 1A, 2A, 9A, 15, 26, 29, 66. Harbour Bus 901, 902. Metro Kongens Nytorv.
Map page 147 no. 20. See also page 64-65.

A functioning royal palace with magnificent state rooms. The Royal Reception Rooms are used by the Queen for royal dinners and receptions. They are richly decorated with works of art, chandeliers and gold. The tapestries in The Great Hall were completed in 2000 and tell the history of Denmark in colourful woven images.
Open: Daily 10 am-5 pm. Mondays closed November-March. The Royal Reception Rooms may be closed in connection with official functions of HM the Queen. Always check christiansborg.dk for today's opening hours before your visit.
Admission: Adults DKK 95. Students DKK 85. Children under 18: Free.



Christiansborg Palace – The Royal Stables

Christiansborg Ridebane 12, 1218 København K -
Tel. (+45) 33 92 64 92, www.christiansborg.dk
Bus 1A, 2A, 9A, 15, 26, 29, 66. Harbour Bus 901, 902. Metro Kongens Nytorv.
Map page 147 no. 20. See also page 64-65.

Christiansborg Palace riding ground is surrounded by the elegant stables from the 1740s. The stables are home to the horses and state coaches used by the Queen of Denmark for royal events. Don't miss the Queen's Golden Carriage.
Open: Apr-Oct daily 1:30 pm-4 pm. July: Daily 10 am-5 pm. Nov-Mar: Tue-Sun 1:30 pm-4 pm. Always check christiansborg.dk for today's opening hours before your visit.
Admission: Adults DKK 60. Students DKK 50. Children under 18: Free.

Christiansborg Palace – The Ruins

Christiansborg Palace
Tel. (+45) 33 92 64 92, christiansborg.dk
Bus 1A, 2A, 9A, 15, 26, 29, 66. Harbour Bus 901, 902. Metro Kongens Nytorv.
Map page 147 no. 20. See also page 64-65.

Underneath the palace lie the atmospheric underground ruins of previous castles. Explore the remains of Absalon's Castle from 1167 and the mighty Blue Tower of Copenhagen Castle. This site has been the center of political power for more than 800 years.
Open: Daily 10 am-5 pm. Mondays closed November-March. Always check christiansborg.dk for today's opening hours before your visit.
Admission: Adults DKK 60. Students DKK 50. Children under 18: Free.



Cisternerne

Søndermarken, 2000 Frederiksberg
Tel. (+45) 30 73 80 32, www.cisternerne.dk
Bus 4A, 6A, 8A, 26. Metro Frederiksberg. S-train Carlsberg.
Map page 145 F7. See also page 77.

Explore the 140-years-old underground former water cisterns, which have been transformed into a spectacular exhibition space. On show in 2019: 'It is not the end of the world' by Danish artist collective SUPERFLEX – a venture into the dark future of climate change.
Open: Tues-Wed 11 am-6 pm. Thu 11 am-8 pm. Fri-Sun 11 am-6 pm. Closed from December 1.
Admission: Adult DKK 10. Child (0-17) free. Students & seniors (65+) DKK 50.



COPENHAGEN

Map references No.

The Danish Jewish Museum – Dansk Jødisk Museum
Proviantpassagen 6, 1218 København K
Tel. (+45) 33 11 22 18, www.jewmus.dk
Bus 1A, 2A, 26, 29, 66. Harbour Bus 901, 902. Metro Kongens Nytorv.
Map page 147 no. 29. See also page 67.



The Danish Parliament – Folketinget, Christiansborg Palace
Christiansborg Slot 1, 1218 København K
www.thedanishparliament.dk
Metro to Kgs. Nytorv or Christianshavn.
Bus 1A, 2A, 26, 40, 66.
Map page 147 no. 25. See also page 66.



Danish War Museum Krigsmuseet
Tøjhusgade 3, 1220 København K
Tel. (+45) 41 20 63 72
Train: Copenhagen Central St.
Bus: 1A, 2A, 9A, 12, 14, 26, 40, 66.
Harbor bus: 991, 992.
Map page 147 no. 22.
See also page 65.

The David Collection - Davids Samling
Kronprinsessegade 30, 1306 København K
Tel. (+45) 33 73 49 49, www.davidmus.dk
S-train & train to Nørreport. Metro to Nørreport & Kgs. Nytorv. Bus 5A, 6A, 14, 15E, 26, 37, 42, 150S, 173E, 184, 185, 350S.
Map page 147 no. 3. See also page 6 and 112-113.



Geological Museum - Geologisk Museum
Øster Voldgade 5-7, 1350 Copenhagen K
Tel. (+45) 35 32 22 22, www.GeologicalMuseum.dk
Metro, trains and S-trains to Nørreport Station.
Bus no. 5A, 6A, 11A, 350S, 14, 40, 42, 43, 184 and 185.
Map page 147 no. 42. See also page 110-111.

DESCRIPTION

Opening hours and admission

Four centuries of Danish Jewish history, illustrious personalities and commoners alike. The interior, designed by the world-renowned architect Daniel Libeskind, is a tribute to peaceful co-existence and compassion.
Open: Jun-Aug Tue-Sun 10 am-5 pm. Monday closed.
Sep-May Tue-Fri 1 pm-4 pm. Sat-Sun 12 am-5 pm. Monday closed. Closed on Yom Kippur 9. October 2019.
Admission: Adults DKK 60. Students/seniors DKK 50. Child (0-17) free.

Christiansborg Palace is the seat of the Danish parliament with 179 elected members from across the country. The parliament occupies most of Christiansborg Palace. Free guided tours in English 12 pm. selected Sundays, public holidays and some weekdays during summer. Highlights: The Folketing Chamber and Denmark's first democratic constitution from 1849. You are also introduced to the political system in Denmark. Check and book tours at www.ft.dk/visit or call the Visitors' Service weekdays 8:30 am to 3 pm: (+45) 33 37 32 21. Tickets can also be collected at the main entrance 10 am on the day of a guided tour.

Explore a world of gunpowder and flying bullets in Christian IV's solid weaponry from 1604. Enter a Danish military camp from the war in Afghanistan, or gain an insight into Denmark's wars from the 1500s until now, with everything from a samurai sword to a German V-1 bomb from World War II and an AK47 from a Somali Pirate.
Open: Tuesday-Sunday 10 am-5 pm. Monday closed. Check warmuseum.dk for guided tours and opening hours.
Admission: Adults DKK 80. Adults in company of a child DKK 70. Children under 18 free.

The David Collection consists of three permanent collections: European 18th century art, Danish Modern Art, and the internationally acclaimed Islamic Collection.
Open: Tues-Sun 10 am-5 pm, Wed 10 am-9 pm. Monday closed. Also closed December 23, 24, 25, and 31.
Admission: Free. Guided tours in English: Saturdays from June through August.

The Geological Museum is beautifully situated in the corner of the Botanical Garden. Here you can experience the impressive mineral halls, touch a 20-ton meteorite and explore the world of nature in the changing special exhibitions. Do not miss the special exhibition *Butterflies – nature's silent messengers*.
The Geological Museum is part of the Natural History Museum of Denmark.
Open: Tue-Sun at 10 am-5 pm. Monday closed. For special opening hours during holidays, please visit www.GeologicalMuseum.dk.
Admission: Adult DKK 105 / Child (3-17 years) DKK 50.



COPENHAGEN

Map references No.

Glyptotek, Ny Carlsberg
Dantes Plads 7, 1556 København V
Tel. (+45) 33 41 81 41 www.glyptoteket.com
1A, 2A, 9A, 37. Stops at "Glyptoteket".
12, 14, 26, 33. Stops at "Rådhuspladsen" (towards Amager) or Stormgade (towards Indre By/ City Center). 5 min. walk. All trains (local, s-trains and intercity) to Copenhagen Central Station.
Map page 147 no. 6. See also page 116.



Guinness World Records
Østergade 16, 1100 København K
Tel. (+45) 33 32 31 31, www.guinness.dk
Metro: Kongens Nytorv.
Bus: 1A, 26, 350S.
Map page 147 no. 18. See also page 69.

The Hirschsprung Collection - Den Hirschsprungske Samling
Stockholmsgade 20, 2100 København Ø
Tel. (+45) 35 42 03 36, www.hirschsprung.dk
Metro Nørreport, S-train Nørreport & Østerport.
Bus 6A, 14, 40, 42, 150S, 184 & 185.
Map page 147 no. 34. See also page 114.



Medical Museion – Medicinsk Museion
Bredgade 62, 1260 København K
Tel. (+45) 35 32 38 00, www.museion.ku.dk
Bus 1A.
Map page 147 no. 40. See also page 115.

The Mystic Exploratorie
Østergade 16, 1100 København K
Tel. (+45) 33 32 31 31, www.ripleys.dk
Metro: Kongens Nytorv. Bus: 1A, 26, 350S.
Map page 147 no. 18. See also page 69.



DESCRIPTION

Opening hours and admission

Museum of international standing featuring collections of ancient art and French and Danish art from the 19th and early 20th centuries.
Open: Tues-Sun 11 am-6 pm, Thurs 11 am-10 pm.
Admission: DKK 115.
Tuesday: free admission / except special exhibitions.
Children under 18 free.

The only Guinness World Records Museum in Europe! Meet the world's tallest man who measured 272cm and try to break a record in the interactive Play Zone.
Open: 15 Jun-31 Aug daily 10 am-10 pm.
Rest of the year: Sun-Thurs 10 am-6 pm. Fri-Sat 10 am-8 pm. 24, 25 & 31 Dec 10 am-4 pm. 1 Jan 12 am-6 pm.
Tickets sale closes an hour before.
Admission: Adult DKK 105. Child (4-11) DKK 60. Child (0-3) free.
Save money with a Fun Pass for all four attractions: Adults DKK 215, children DKK 130.

Unique collection of 19th century Danish art, ranging from Golden Age art to the Skagen Painters and Symbolists.
Open: Wed-Sun 11 am-4 pm, Monday and Tuesday closed.
Open until 8 pm on selected Thursdays. Check the museum's website.
Closed 23-26 & 31 Dec & 1 Jan. May be closed during installation of exhibitions. Check the museum's website.
Admission: Adult: DKK 95. Under 18 free. The Parkmuseerne ticket: DKK 245.

A must see museum for all who is curious about the human body, disease and health. In the historical Royal Academy for Surgeons from 1787.
Open: Tues-Fri 10 am-4 pm & Sat-Sun 12 am-4 pm. On weekdays guided tours at 1 pm and 2 pm (in English) Weekend guided tours at 12:30 am, 1:30 pm (in English) and 2:30 pm.
Admission: Adult DKK 75. Children age 5-16 DKK 50.
Children under 5 free.
Students & pensioners DKK 50.

A hands-on attraction where your senses will be tested in many ways. Control the weather, sit in an electric chair and leave your shoes behind.
Open: 15 Jun-31 Aug daily 10 am-10 pm. 1 Sep-14 Jun Sun-Thurs 10 am-6 pm. Fri-Sat 10 am-8 pm. 24, 25 & 31 Dec 10 am-4 pm, 1 Jan 12 am-6 pm.
Tickets sale closes an hour before.
Admission: Adult DKK 60. Child (4-11) DKK 40. Child (0-3) free.
Combi Ticket available for four attractions: Adult DKK 215.
Save money with a Fun Pass for all four attractions: Adults DKK 215, children DKK 130.



COPENHAGEN

Map references No.

Mostings House

Andebakkesti5, 2000 Frederiksberg
Tel. (+45) 69 13 80 90, www.moestingshus.dk
Metro Frederiksberg. Bus 8A, 9A.
Map page 145 F7. See also page 77.

National Museum of Denmark – Nationalmuseet

Ny Vestergade 10, 1471 København K
Tel.(+45 33 13 44 11)
Train: Copenhagen Central Station
Bus: 1A, 2A, 9A, 12, 14, 26, 33, 40, 66, 350S.
Harbour bus: 991, 992
Map page 147 no. 10. See also page 7 & 75 & 117.

Our Saviour’s Church - Vor Frelzers Kirke

Sankt Annæ Gade 29, Christianshavn,
1416 København K
Tel. (+45) 32 54 68 83, www.vorfrelserskirke.dk
Metro: Christianshavns Torv.
Bus: 2A, 9A, 40, 350S.
Map page 147 no. 27. See also page 61.

Ripley’s Believe It or Not!

Rådhuspladsen 57, 1550 København V
Tel. (+45) 33 32 31 31, www.ripleys.dk
Train and S-train to Copenhagen Central Station.
Bus to Town Hall Square 2A, 5A, 6A, 10, 12, 14, 26,
33, 250S.
Map page 147 no. 17. See also page 69.

Rosenborg Castle

Øster Voldgade 4A
Tel. (45+) 3315 3286, rosenborgcastle.dk
Metro & trains: Nørreport. Bus 14, 42, 184, 185, 5C,
6A, 15W, 150S, 350S.
Map page 147 no. 11. See also page 107.

DESCRIPTION

Opening hours and admission

Møstings House is an exhibition hall with special emphasis on contemporary art. The exhibits cover a wide range of expressions, from painting, photography and video to sculpture and installation.
Open: All year Tue-Sun 11 am-4 pm. Monday closed.
Admission: Free.

Visit Denmark’s largest history museum and meet the Danes. From the first settlers that hunted the forest-dwelling giant aurochs to the sun worshippers who built towering burial mounds. Meet the Vikings that tamed the seas and raided the four corners of the known world and the freethinking people that spearheaded the sexual revolution. Discover some of the world’s most precious cultural treasures.

Open: Tues-Sun 10 am-5 pm. Monday closed, with the exception of July and August. The Children’s Museum closes at 4.30 pm. Open on special days: News year’s day, 2nd day of Easter, Constitution Day, 2nd day of Christmas and Monday October 16 (autumn break). Closed on December 24, 25, and 31.
Admission: DKK 95. Family Ticket (1 adult and 1 child) DKK 80. Children under the age of 18 are free.

The newly restored 320-year-old baroque church features an impressive period piece organ. Access to the 265-year-old tower with the famous outside twisted spire and the most impressive view of the city.

Opening hours:
Tower: 23 Feb-30 Apr Mon-Sun 10 am-4 pm.
1 May-30 Sep Mon-Sun 9:30 am-7 pm. 1 Oct-15 Dec Mon-Sun 10 am-4 pm.
Sundays & holidays the tower opens at 10:30 am.
Church: All year daily 11 am-3:30 pm. Closed during services.
Admission Tower:
Low season: Adult DKK 35. Child free. Students, groups & seniors DKK 25.
High season: Adult DKK 50. Child DKK 10. Students, groups & seniors DKK 40. Seanticket DKK 75. **Church free**

The weirdest museum in Copenhagen! Experience incredible works of art, strange people and optical illusions in the only Ripley’s Believe It or Not! In Scandinavia.

Open: 15 Jun-31 Aug daily 10 am-10 pm. 1 Sep-14 June Sun-Thurs 10 am-6 pm. Fri-Sat 10 am-8 pm. 24, 25 & 31 Dec 10 am-4 pm, 1 Jan 12 am-6 pm.
Tickets sale closes an hour before.
Admission: Adult DKK 105. Child (4-11) DKK 60. Child (0-3) free.
Save money with a Fun Pass for all four attractions: Adults DKK 215, children DKK 130.

Beautiful 400-year-old castle with a Great Hall, preserved interiors, and an impressive art collection. Visit the treasury with the priceless royal regalia and the crown jewels. Book your ticket at rosenborgcastle.dk.

Open: 2 Jan-15 Apr Tues-Sun 10 am-3 pm. 16 Apr - 31 May daily 10 am-4 pm (closed 29 Apr). 1 June-31 Aug daily 9 am-5 pm. 1 Sep - 31 Oct daily 10 am-4 pm. 1 Nov-31 Dec Tues-Sun 10 am-3 pm.
Admission: Adults: 115 DKK. Child (0-17): free. Groups 95 DKK (min. 12 pers.). Students: 75 DKK. Combined ticket with Amalienborg Palace 160 DKK.



COPENHAGEN

Map references No.

Royal Danish Library & The Black Diamond

Søren Kierkegaards Plads 1, 1221 København K
Tel. (+45) 33 47 47 47, www.kb.dk/
Bus 66, Harbour Bus 991, 992,
Map page 147 no. 39. See also page 67 & 122.

SMK – National Gallery of Denmark

Sølvgade 48-50, 1307 Copenhagen K
Tel. (+45) 33 74 84 94. www.smk.dk #smkmuseum
Nearest metro, trains & S-trains: Nørreport.
Buses: 5A, 6A, 11A, 14, 26, 42, 150S, 184, 185, 350S.
Map page 147 no. 30. See also page 108-109.

Storm P. Museum

Frederiksberg Runddel, 2000 Frederiksberg
Tel. (+45) 38 86 05 00, www.stormp.dk
Bus 6A, 8A, 9A, 26. Metro Frederiksberg.
Map page 145 F7. See also page 77.

Thorvaldsens Museum

Bertel Thorvaldsens Plads 2, 1213 København K
Tel. (+45) 33 32 15 32, www.thorvaldsensmuseum.dk
Metro Kongens Nytorv. Bus 1A, 2A, 9A, 26, 37 and 66. Harbour Bus 991, 992.
Page 147 no. 37. See also page 66, 120.

The Tower – Folketinget, Christiansborg Palace

Christiansborg Slotsplads - Kongeporten
www.taarnet.dk
Bus 1A, 2A, 26, 40, 66 and 350S or metro to Kgs. Nytorv or Christianshavn.
Map page 147 no. 14. See also page 66.

Zoological Museum – Zoologisk Museum

Universitetsparken 15, 2100 Copenhagen Ø
Tel. (+45) 35 32 22 22, www.ZoologicalMuseum.dk
Bus no. 18, 42, 43, 184 and 150S.
Map page 145 F6. See also page 110-111.

DESCRIPTION

Opening hours and admission

The Black Diamond is a striking modern addition to the Royal Danish Library - and a venue for cutting-edge culture and historical insight alike. Shop, café and restaurant. Concerts, talks and exhibitions.
Open: All year Mon-Fri 8 am-8 pm Sat 9 am-6 pm. Reduced hours Jul-Aug. Exhibitions Mon-Fri 10 am-7 pm Sat 10 am-6 pm.
Admission: Free access to the building.
Exhibitions: Adult DKK 60 Children/Copenhagen Card free. Student DKK 30.

Experience 700 years of Danish and international art, special exhibitions, guided tours, late night events, Children’s Workshop, the KAFETERIA, shop and much more. Or simply enjoy the beautiful architecture and relax in the museum garden.

Open: Tue-Sun 10 am-6 pm, Wed 10 am-8 pm. Mondays closed.
Admission: See www.smk.dk for more information.

Museum for Danish humorist, cartoonist and painter Robert Storm Petersen (Storm P) and for humor and satire in art. Alternating special exhibitions. On show in 2019: Storm P. and America (May-Sept).
Open: All year Tue-Sun 10 am-4 pm. Monday closed.
Admission: Adult DKK 50. Child (0-17) free. Students and seniors (+65) DKK 40.

The museum presents a fascinating combination of marble and plaster sculptures and warm - hued decorative interiors, featuring the works of Denmark’s most famous sculptor, Bertel Thorvaldsen (1770-1844).
Open: All year Tue - Sun 10am - 5 pm.
Monday closed. 24, 25, 31 Dec & 1 Jan closed.
Admission: Adult DKK 70. Student DKK 50. Child (0-17) free.
Wednesday free admission.

With a height of 106 metres, the tower on Christiansborg Palace is the highest tower in Copenhagen. Enjoy the amazing view of Copenhagen and visit a restaurant that is a cut above many.
Find more information at www.taarnet.dk.
Open: The View – Monday closed. Tues-Sun 11 am-9 pm.
Please note that due to renovation, the tower will be closed between 6. June - 31. August 2019.
Admission: Free.

Explore natural history among musk oxen, whales and extinct species, or venture into the world of Charles Darwin in the exhibition on evolution. The 17-meters-long dinosaur ‘Misty’ is on display in the exhibition *Precious Things*, accompanied by a range of the museum’s most beautiful and valuable treasures. The museum features a shop and a Natural History Laboratory with hands-on activities for the whole family. The Zoological Museum is part of the Natural History Museum of Denmark.
Open: Tue-Sun at 10 am-4 pm. Monday closed.
For special opening hours during holidays, please visit www.ZoologicalMuseum.dk.
Admission: Adult DKK 105 / Child (age 3-17) DKK 50.



BEYOND COPENHAGEN

Map references No.

Circus Museum - Cirkusmuseet
Hovedporten 6, 2650 Hvidovre, Copenhagen
Tel. (+45) 36 49 00 30, www.cirkusmuseet.dk
Bus 1A & 133. S-train A to Avedøre station.
Map page 145 F7. See also page 74.

DESCRIPTION

Opening hours and admission

Experience a fun-filled visit for the entire family at the Circus Museum. See Beautiful costumes, special props and lots of films and pictures with amazing acts in the exhibition. You can also try costumes, walk the tight rope or take the treasure hunt for children. On every Sunday and during school Holidays you can step into the circus ring and try out everything from juggling to trapeze under the guidance of a circus artist. It takes place in a special building next to the museum dedicated to circus activities.
Open: All year Sun-Thurs 10 am-3 pm. Closed 23 Dec-1 Jan. Closed Friday and Saturday.
Admission: Adult DKK 60. Children are free when accompanied by an adult. Groups of min 10 persons DKK 48.
Danish Museum of Science and Technology -



Danmarks Tekniske Museum
Fabriksvej 25, 3000 Helsingør/Elsinore
Tel. (+45) 49 22 26 11, www.tekniskmuseum.dk
Train to Helsingør, bus 802 or 353
Map page 145 F2. See also page 82.

A museum for the whole family. From the first childlike fascination with technology and machines, through the contemporary critical view of technology and everyday life, to the nerdy insight into mechanics and function. At the museum you can explore a breathtaking collection and unique narratives, from the first technical inventions to the notion of what may await in the future.
Open:
Feb. - Oct.: Tuesday - Sunday 10 am - 5 pm
Nov. - Jan.: Tuesday - Sunday 10 am - 4 pm
Closed on Mondays (except during school holidays)
Admission: Adults: 90 DKK., Senior (65+): 80 DKK., Student (Valid ID): 80 DKK. Children (under 18): Free.



Frederiksborg Castle, Museum of National History – Det Nationalhistoriske Museum på Frederiksborg Slot
Frederiksborg Slot, 3400 Hillerød, Tel. (+45) 48 26 04 39, www.dnm.dk, S-train to Hillerød, line E. Bus 301, 302 or 303. Map page 145 E3. Map page 87 no. 1.
See also page 86-87.

A magnificent Renaissance castle from the early 17th century and home to the Museum of National History that features paintings, furniture and art treasures.
Chapel from 1617.
Open: 1 Apr-31 Oct 10 am-5 pm. 1 Nov-31 Mar 11 am-3 pm.
Admission: Adult DKK 75. Child (6-15) DKK 20. Student & Seniors (+65) DKK 60.

Hillerød Town Museum – Hillerød Bymuseum
Helsingørgade 65
Tel. (+45) 72 17 02 40, www.museumns.dk
S-train to Hillerød Station. 10 minutes walk from here.
Map page 145 E3. Map page 87 2. See also page 83.

In a corner of the gardens of Frederiksborg Castle, you will find a museum that shows 500 years of Hillerød's history: from tiny village to capital of Northern Zealand. Let the children play and explore Hillerød's history in the "Street of time".
Open: 1. May - 31. October Tues-Sun 10 am-3 pm.
Admission: Adult DKK 25 w/18 free admission.

Karen Blixen Museum – Karen Blixen Museet
Rungsted Strandvej 111, 2960 Rungsted Kyst
Tel. (+45) 45 57 10 57, www.blixen.dk
Train to Rungsted Kyst, bus 388.
Map page 145 F4. See also page 123.

Rungstedlund, the birthplace and home of famous Danish author Karen Blixen, exhibitions, film and exciting events. Garden with bird reserve. Library, bookshop & café.
Open: May-Jun Tue-Sun 10 am-5 pm, Monday closed. July-Aug Mon-Sun 10 am-5 pm.
Sep Tue-Sun 10 am-5 pm, Monday closed. Oct-Apr Wed-Fri 1 pm-4 pm. Sat-Sun 11 am-4 pm, Monday and Tuesday closed.
Admission: Adult DKK 100. Child (0-13) free.

Kronborg Castle
3000 Helsingør/Elsinore
Tel. (+45) 49 21 30 78, www.kronborg.dk
Train to Helsingør/Elsinore (40 minutes from Copenhagen). Map page 145 G2. See also page 84-85.

'Hamlet's Castle' in Elsinore is a must-see! A world heritage Renaissance castle with soaring towers, a huge ballroom and damp casemates.
Open: Oct-May: Daily 11 am-4 pm (Nov-March Mondays closed). June-Sep: Daily 10 am-5:30 pm.
Admission: Adults DKK 95-145. Children under 18 free.



BEYOND COPENHAGEN

Map references No.

KØS Museum of Art in Public Spaces - KØS Museum for kunst i det offentlige rum
Nørregade 29, 4600 Køge
Tel. (+45) 56 67 60 20, www.koes.dk
S-train line A and E to Køge.
Bus: 101A, 102A, 108, 109, 120, 245, 253, 255, 260R.
Map page 145 D8. See also page 124.

DESCRIPTION

Opening hours and admission

KØS is Denmark's museum dedicated to art in public spaces - from our shared urban spaces, hospitals, schools, churches, and other public areas. KØS exhibits both inside and outside the museum and often invites to artist talks, seminars, debate, and workshops for children.
Open: Tues-Sun 11 am-5 pm, Monday closed.
Admission: see www.koes.dk

Louisiana Museum of Modern Art
Gl. Strandvej 13, 3050 Humlebæk
Tel. (+45) 49 19 07 19, www.louisiana.dk
Train to Humlebæk and bus 388.
Map page 145 F3. See also page 118-119.

Leading international museum of modern art. A sculpture park with panoramic sea view. Café, Shop and a Children's Wing.
Open: Tue-Fri 11 am-10 pm, Sat-Sun & public holidays 11 am-6 pm. Mondays closed. Closed 24, 25 & 31 Dec, 1 Jan.
Admission: Adult +18 DKK 125. Under 18 free. Student DKK 110. Online tickets available.



Maritime Museum of Denmark (M/S Museet for Søfart)
Ny Kronborgvej 1, 3000 Helsingør
Tel. (+45) 49 21 06 85, www.mfs.dk
Map page 145 F1-G2. See also page 125.

Award winning museum with spectacular architecture and engaging exhibitions. Follow the sloping bridges down to an underground maritime world with interactive exhibitions telling the story of Denmark as a seafaring nation in an international world. Museum shop and café.
Open: Tues-Sun 11 am-5 pm, July-Aug Daily 11 am-6 pm.
Closed: 23-25 and 31 Dec and 1 January.
Admission: Adults 120 DKK. Children (0-18 years) and students under 26: Free. Free entrance with Copenhagen Card. 25 % discount with a ticket to Kronborg Castle. Further info: www.mfs.dk



The Rudolph Tegner Museum and Statue Park - Rudolph Tegnens Museum og Statuepark
Museumsvej 19, Villingørød, 3120 Dronningmølle
Tel. (+45) 49 71 91 77, www.rudolphtegner.dk
Map page 145 E1. See also page 123.

A unique monument to a single artist – conceived and realized by himself as a synthesis of sculpture, architecture and nature. Family-friendly. Café. Several of the artist's sculptures have been erected near Kronborg Castle in Helsingør/Elsinore. Rent a car or travel by train/bus to Villingørød Station. From here a 20min walk. Plan your visit on www.krak.dk or www.rejseplanen.dk and print a map for the journey.
Open: 15 Apr - 31 May: Tue-Sun 12 am-5 pm. 1 June - 31 Aug: Tue-Sun 11 am-6 pm. 1 Sep-20 Oct: Tue-Sun 12 am-5 pm. Monday closed.
The Sculpture Park is open all year.
Admission: Adult DKK 60. Child (0-15) free. Groups min. 10 persons DKK 50. The park is for free.



Skjoldenæsholm Tram Museum – Sporvejsmuseet Skjoldenæsholm
Skjoldenæsvej 95, 4174 Jystrup Midtsjælland
Tel. (+45) 57 52 88 33 or (+45) 40 45 82 10, www.sporvejsmuseet.dk
Map page 145 A8. See also page 91.

A working museum where historic trams take you out into the surrounding countryside. There are 90 tramcars, 3 trolleybuses, 50 vintage buses and an interesting exhibition of both trams and buses.
One special unit is an iconic green 1950-vintage Melbourne tram, which the Danish Crown Prince and Princess received as a gift from Melbourne in 2006.
The museum ranks among the five leading of its kind in the world.
Open: 21 Apr-20 Oct Sat-Sun & holidays, 10 am-5 pm. 25 June-11 Aug also Tue-Fri 10 am-5 pm. Monday closed. 31 Aug & 28 Sep late night open 10 am-10 pm.
Week 42: daily 10 am-5 pm. 14-15 Dec: Christmas open 10 am-4 pm.
Admission: Adult DKK 120. Child DKK 60.





BEYOND COPENHAGEN

Map references No.

The Viking Ship Museum – Vikingeskibsmuseet
Vindeboder 12, 4000 Roskilde
Tel. (+45) 46 30 02 00, www.vikingshipmuseum.dk
Train to Roskilde and bus 203 from Roskilde station or about 25 minutes' walk.
Map page 145 C7. See also page 127.

DESCRIPTION

Opening hours and admission

Public Transport
see www.rejseplanen.dk

Experience five original 11th century Viking ships and the Sea Stallion from Glendalough, the World's largest Viking ship reconstruction. The museum boatyard features reconstructions of Viking ships and other traditional, Nordic wooden boats in which you can even go sailing on daily trips from 1 May - 30 September. Exhibitions, films and activities for all the family every day year round.
Open: 1 Jan-30 April + 21 Oct-30 Dec: Daily 10 am-4 pm. 1 May-20 Oct + Danish school holidays: Daily 10 am-5 pm
Closed 24, 25 & 31 Dec.
Admission: Child (0-17) free. 1 May-20 Oct + Danish school holidays: One adult DKK 150 (Subsequent adults DKK 140).
1 Oct-30 Apr.: Adult DKK 110 (Subsequent adults DKK 100).
Boat trip, supplement DKK 120.



The Øresund Aquarium – Øresundsakvariet
Strandpromenaden 5, 3000 Helsingør
Tel. (+45) 3532 1970, www.oresundsakvariet.ku.dk
Map page 145 F2. See also page 126.

The Øresund Aquarium shows the amazing world of local sea life in Øresund. Join us on a journey below the surface and experience the animals up-close at our touch pools - hold a starfish and pat a crab. During the summer and holidays you can join special activities as crab fishing, beach seining and whale watching.
Open: July - August Daily 10 am-6 pm. September-June Mon-Fri 10 am-4 pm, Sat-Sun 10 am-5 pm.
Admission: Adults DKK 79 and children (3-11 years) DKK 59. Family ticket (2 adults + 2 children DKK 240).

FUNEN AND JUTLAND

Map references No.



ARoS Aarhus Art Museum – ARoS Aarhus Kunstmuseum
Aros Allé 2, 8000 Aarhus
Tel. (+45) 87 30 66 00, www.aros.dk
See also page 92.

DESCRIPTION

Opening hours and admission

The ARoS Aarhus Museum of Modern Art is the nation's largest art collection outside Copenhagen – a spectacular home for arts offering exciting experiences for all ages, not least the skywalk 'Your rainbow panorama' by Danish-Icelandic artist Olafur Eliasson, which lets you soak in the cityscape bathed in the hues of the rainbow.
Open: All year Tue-Sun 10 am-5 pm, Wed 10 am-10 pm, Monday closed.
Admission: Adult DKK 135. Child (0-17) free. Students DKK 105.

Danish Railway Museum – Danmarks Jernbanemuseum.
Dannebrogsgade 24, 5000 Odense C
(+45) 66 13 66 30, www.jernbanemuseet.dk
Located in the centre of Odense, just north of Odense Central Station. A five-minute walk from the bus stop for city and regional buses and a two-minute walk from the train platform.
See also page 95.

Situated in an old roundhouse dating from 1954. Travel back in time when you look inside the many engines and carriages. Sit on the bench of an old passenger car, see the carriages of Denmark's Royal Family and pretend you are the train driver of an impressive steam engine.
Open: 2 Jan-23 Dec Every day 10 am-4 pm. 26 Dec-30 Dec Every day 10 am-4 pm. **Admission:** Adult DKK 80: All other periods. Adult DKK 110: 13-22 April; 29 Jun-11 Aug & 12-20 Oct 2019. Adult DKK 150: 16-19 May 2019. Child (5-17) Free: All other periods. Child (5-17) DKK 50. 13-22 April; 29 Jun-11 Aug & 12-20 Oct 2019. Child (5-17) DKK 65. 16-19 May 2019. Children (0-4) Free.

Egeskov Castle – Egeskov Slot
Egeskov Gade 18, 5772 Kværndrup, Fyn/Funen
Tel. (+45) 62 27 10 16, www.egeskov.dk,
info@egeskov.dk
See also page 97.

Egeskov is one of Europe's best-preserved Renaissance castles. Visit the castle, the garden and themuseums featuring vintage automobiles, motorcycles and historical agricultural equipment – and the Titania's Palace (doll's house). Make a daytrip to one of the most beautiful places in Europe. Buy tickets online: www.egeskov.dk
Open: daily 27 April- 20 Oct 2019. **Admission:** Adult: DKK 195-225 / Child (4-12) DKK 115-135 depending on the season.



FUNEN AND JUTLAND

Map references No.

H. C. Andersen Museum
Claus Bergs Gade 11, 5000 Odense
Tel. (+45) 65 51 46 01, www.hcandersens odense.dk
See also page 95.

DESCRIPTION

Opening hours and admission

Public Transport
see www.rejseplanen.dk

A new, exceptional exhibition offers you a genuine presentation of Hans Christian Andersen's life, words, images and famous private possessions. See the writer's workshop, the high hat and travel requisites - and enjoy looking at the many poetical papercuts he made. They are small fairytales in themselves that go straight to the heart of all those who love Hans Christian Andersen.
Open: 2 Jan-14 June & 16 Sep - 30 Dec Tue-Sun 10 am-4 pm. Monday closed.
15 June - 15 Sep Mon-Sun 10 am - 5 pm.
16 Sep - 30 Dec Tue-Sun 10 am-4 pm. Monday closed.
Open Mondays on 22/4, 10/6 and 14/10. Closed 24, 25, 31 Dec & 1 Jan.

H. C. Andersen's Birthplace
H.C. Andersens Hus
Hans Jensen Stræde 45, 5000 Odense
Tel. (+45) 65 51 46 01, www.hcandersens odense.dk
See also page 95.

The now iconic small yellow corner house was situated in the poorest part of Odense. Here Hans Christian Andersen was born in 1805 as the son of a poor shoemaker and a washerwoman. Denmark's great writer of fairytales came from a humble background, but via his considerable writings he managed to become one of the greatest writers that have ever lived. He wrote more than 156 tales as well as 14 novels and short stories, 50 dramatic works, 1000 poems and a large number of biographical works.
Open: 2 Jan-14 June & 16 Sep - 30 Dec Tue-Sun 10 am-4 pm. Monday closed.
15 June - 15 Sep Mon-Sun 10 am - 5 pm.
16 Sep - 30 Dec Tue-Sun 10 am-4 pm. Monday closed.
Open Mondays on 22/4, 10/6 and 14/10. Closed 24, 25, 31 Dec & 1 Jan.

H. C. Andersen's Childhood Home – H.C. Andersens Barndomshjem
Munkemøllestræde 3-5, 5000 Odense
Tel. (+45) 65 51 46 01, www.hcandersens odense.dk
See also page 95.

The house where fairytale writer Hans Christian Andersen lived from the age of two until he was fourteen. The small cobbler's dwelling is only 18 sq meters in size. Today, it houses an exhibition on Hans Christian Andersen's links to his native city of Odense. Here you'll find a small exhibition of childhood memories, told by Hans Christian Andersen himself.
Open: 2 Jan-14 June & 16 Sep-30 Dec Tue-Sun 11 am-4 pm. Monday closed.
15 June-15 Sep Mon-Sun 10 am - 5 pm
16 Sep-30 Dec Tue-Sun 10 am-4 pm. Monday closed
Open Mondays on 22/4, 10/6 and 14/10. Closed 24, 25, 31 Dec & 1 Jan
Admission:
2 Jan-14 June & 16 Sep-30 Dec Adults 110 DKK – Groups (min. 10 pers.) 100 DKK
15 June-15 Sep Adults 135 DKK – Groups (min. 10 pers.) 125 DKK
With this ticket you get admission to H.C. Andersen Museum, H.C. Andersen Birthplace, H.C. Andersen Childhood Home, The Tinderbox and Møntergården on day of purchase.
Children (0-17 years incl.) 0 DKK

Moesgaard Museum
Moesgaard Allé 15, 8270 Højbjerg
Tel. (+45) 87 39 40 00, www.moesgaardmuseum.dk
Bus 18 from central Aarhus stops at the museum.
Regional bus 100 stops appr. 0.7 miles from the museum. Free parking.
See also page 93.

Moesgaard Museum presents archeological and ethnographic exhibitions and special exhibitions with artefacts from Denmark as well as from around the world. Moesgaard Museum is an impressive attraction not only because of the architectural design of the museum and the exhibitions, but also because of its location in the beautiful surroundings overlooking the forest and the sea.
Open: Wed 10 am-9 pm. Tues, Thu-Sun 10 am-5 pm. Mon closed, with the exception of holidays and the period 20. may to 26. aug 2019.
Closed: December 24, 25 and 31 and January 1.
Admission: Adults DKK 120-140 (season). Children (17 and under) free. Students (with valid ID) DKK 90-110 (season).

GETTING AROUND

AIR-RAIL TRAINS

Link Copenhagen Airport and the Central Station in Copenhagen. The journey takes approx. 14 minutes and trains run every 10 minutes, The Metro also links the airport and central Copenhagen, and takes approx. 15 minutes to Nørreport and run every 5-6 minutes. One way ticket: Dkr 36.

CPH CARD

The CPH Card offers free and unlimited travel by buses, trains and the Metro throughout the Greater Copenhagen region in addition to entrance-fees to 87 museums and attractions. It also allows you discounted prices at a number of activities, restaurants etc. The card is valid for either 24, 48, 72 or 120 hours for both adults and children. www.visitcopenhagen.dk and www.copenhagencard.dk



PARKING

When parking, visitors can pay with cash or card: Use the pay stations placed in the streets. Important: You need to enter your license plate. Sometimes time-limited parking is free but a special parking disc must be used. These are available at service stations in Denmark. You have to pay for parking at all times from 08:00 on Monday until 17:00 on Saturday. Your parking ticket is valid for the zone in which it was bought and also in any cheaper zones. Note: Your parking is valid for all zones from 18:00 in the evening until 08:00 the next morning because charges are the same everywhere for that time period. www.kk.dk/parking

PUBLIC TRANSPORTATION

S-trains, trains, Metro and buses link the areas of inner and outer Copenhagen. Single tickets or travel cards are valid for all four means of transport and for transfer between them. Copenhagen Airport www.cph.dk Copenhagen Metro www.m.dk Copenhagen Central Station www.hovedbanen.dk

Where to purchase tickets and travel cards Ticket or travel cards can be purchased at most sta-

tions, a number of kiosks and at your mobile at 1415.dk Furthermore, you can purchase single tickets from bus drivers, and the City Pass can also be purchased at Copenhagen Airport. www.moviatrafik.dk

Harbour Buses line 991, 992 and 993 interconnect the city daily. Discount cards, 24-hour tickets and CPH Cards are all valid for the Harbour Bus. Cash tickets are available on board.

REGIONAL TRAINS

Depart frequently from Copenhagen Central Station to major neighbouring towns. Kystbanen (the Northern Line) runs between Copenhagen Airport and Helsingør/ Elsinore 3-6 times/hour. Western line runs to Roskilde 3-6 times/hour. www.dsb.dk InterCity trains Hourly services connect Copenhagen with Odense/Funen and the main towns of Jutland. Seat reservation is not required, but recommended. www.dsb.dk

CHILDREN

One adult can bring along two children under the age of 12 free, on several of the tickets. Children under the age of

16, can buy tickets. (half price), and bring along one child, under the age of 12 free.

TAXI

In Copenhagen you can hail a taxi on the street or pick one up at taxi stands throughout the city. You can also book a taxi by phone (increased basic fare!). A vacant taxi carries the sign “FRI” (free) in the window.

GOING TO SWEDEN

Scandlines - car & passenger ferry Helsingør-Helsingborg, 2-3 departures / hour. Duration: 20 min. Tel. +45 3315 1515 or www.scandlines.dk

ÖRESUNDSBRON – BY TRAIN AND CAR

The Öresund Bridge linking Denmark and Sweden is a toll bridge. It is open to motorists and trains. Bicycles are not allowed but you can bring them with you on the trains that cross the bridge between Copenhagen and Malmö every 20 minutes. www.oresundsbron.dk

TRANSPORT TO THE CRUISE TERMINAL

Copenhagen has four cruise terminals, Langelinie Quay, Nordre Toldbod, the Freeport (Frihavnen) and Ocean Quay (Oceankaj). The new cruise terminal Ocean Quay in Copenhagen’s North Harbour, Nordhavn, was inaugurated in 2014 and is expected to welcome 60% of cruise calls in Copenhagen.

Bus 27 runs from Oceankaj to Østerport Station and further on to Nørreport Station (only when we have a cruise line)

Bus 26 is a regular route to Kongens Nytorv, Copenhagen Central Station, Østerport and Rådhuspladsen. During the season, the bus is also extended to Søndre Freeport Ferry Terminal and Langelinie Quay and Ocean Quay (Oceankaj).

You will need a two-zone ticket, which costs Dkr 24.



SIGHTSEEING BY BOAT

Experience Copenhagen from the waterside, on board a blue NETTO-BOAT. Make yourself comfortable and enjoy the scenery, while our guide tells about the beautiful sights in Danish, English and German. The tour starts at Holmens Church or Nyhavn (Helbergsgade) Duration: 60 min. Prices: Adults 50 DKK - Children 20 DKK.

Map page 147 23



GUIDED TOURS

Why not discover the city in the company of local guides and other fellow travellers? The city offers many creative and fun tours in English.

CPH:COOL

City walks for urban explorers. Tours include visits to climate-change initiatives, craft beer makers and some of the city's creative neighbourhoods.
CPHcool.dk

FOODS OF COPENHAGEN

Guided tours of the city's food scenes, including a 4-hour culinary walk, a sweet-tooth tour and visits to some of the city's local foodie-districts.
foodsofcopenhagen.com

BIKE COPENHAGEN WITH MIKE

A very personal guided bicycle tour with a local called Mike. Adventures and urban discovery by bike. The summer and winter tours include the city's highlight attractions.
bikecopenhagenwithmike.dk

COPENHAGEN FAIRY TALES

Discovery tours on foot and by bike. The tours include full-day excursions, walking tours and food tours. Bicycle tours are also offered.
copenhagenfairytales.dk

CHRISTIANIA TOURS

Guided walkabouts in the city's freetown of Christiania. Tour guides are local residents,

who offer a very personal introduction to this alternative-living district.
rundvisergruppen.dk

GHOST TOUR

The spooky way to discover Copenhagen. Group tours take place during the dark hours of dusk and include hair-raising tales and even dining experiences.
ghosttours.com

SEGWAY TOURS COPENHAGEN

Get whizzing through the city. There are one-hour and two-hour tours of the city's highlight attractions and most charming historic downtown districts.
segwaytourscopenhagen.com

RUNNING COPENHAGEN

Strap on your sneakers and discover the city's modern architecture. There are also running tours through Christiania and a combined running exercise and sauna experience.
running-copenhagen.dk

KAJAKOLE

Guided tours of the city's waterways by kayak. They also offer Stand Up Paddle (SUP) courses and kayak polo facilities by the city's 5km sandy urban beach.
kajakole.dk

KAYAK REPUBLIC

Guided city tours and kayak rental. There is a Nordic Food Tour with titbits by the quayside. And there is an architecture tour of the city's many waterside marvels.
kayakrepublic.dk

BIKING COPENHAGEN

Bike the city and its green surroundings. There are tours of between 4 and 7 hours where you get to experience local wildlife and parklands. Tours are also offered in Spanish.
bikingcopenhagen.com

COPENHAGEN FREE WALKING TOURS

Pay what you like! There are classical tours by foot of the city's highlights as well as guided walks in historic neighbourhoods. There is even a pub crawl!
copenhagenfreewalkingtours.dk

SHOW ME COPENHAGEN

Guided tours by bike and on foot. There is a wide program of different tours, including a royal tour and an introduction to the city's design and fashion. There is even a treasure hunt!
showmecopenhagen.dk

HISTORICAL CITY WALKS

Discover the city's history period by period. Wander through the city's Rococo district or explore medieval Copenhagen with a guided walk through history.
historytours.dk

COPENHAGEN WALKING TOURS

Enjoy the inspiring company of storytellers as they walk you through the historical city. The tours include a Hans Christian Andersen walk and a visit to Rosenborg Castle.
copenhagen-walkingtours.dk



CITY PASS

The easiest ticket for bus, train and metro

City Pass is your all-in-one ticket to Copenhagen's public transportation network which is valid for up to 5 days. City Pass makes it easy to visit popular attractions in Copenhagen City and Greater Copenhagen.

CITY PASS SMALL FROM 80 DKK

Unlimited travel
within Copenhagen
City, including
the airport

CITY PASS LARGE FROM 160 DKK

Unlimited travel
within Greater
Copenhagen, including
Copenhagen City

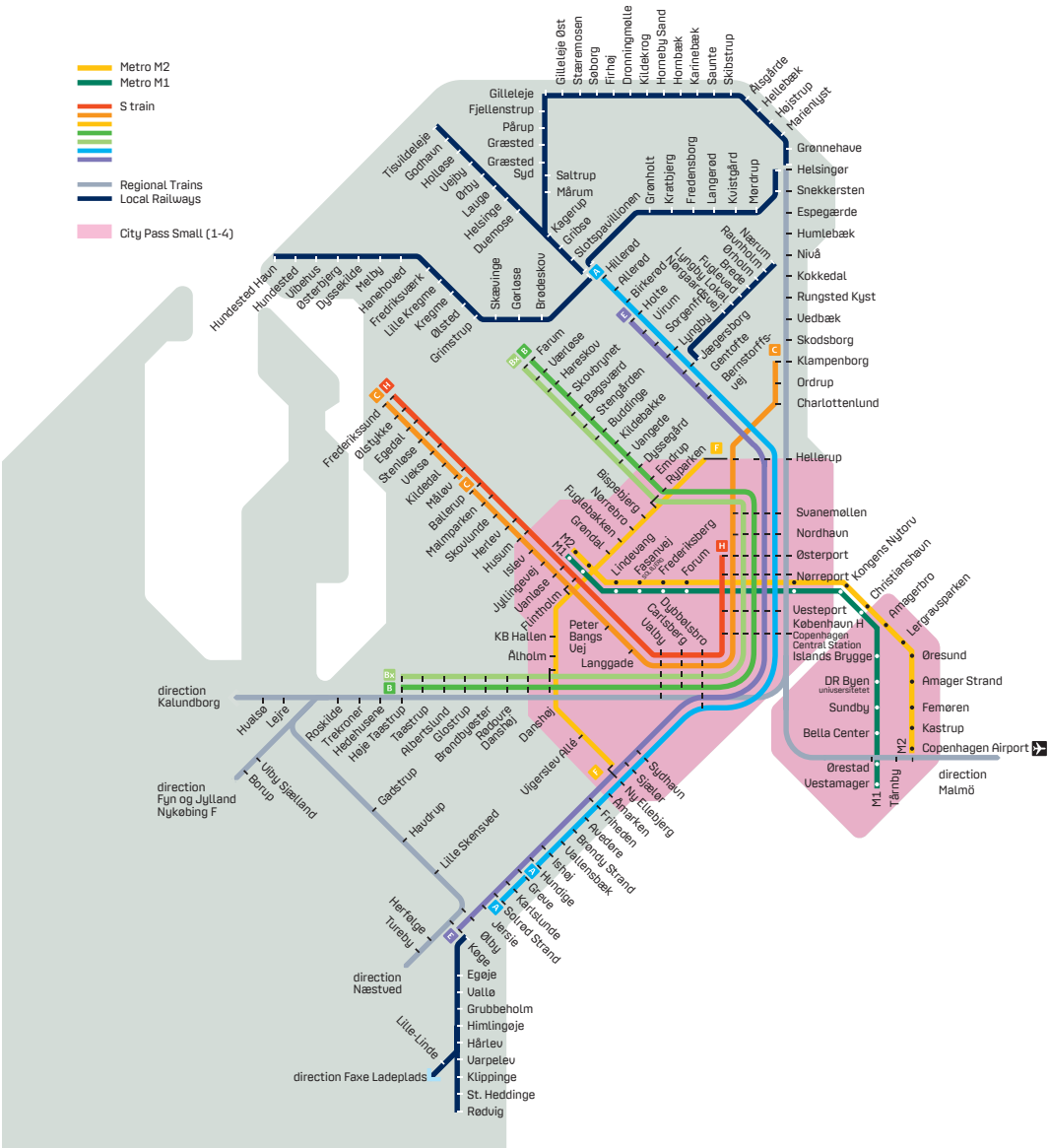
Buy your City Pass at ticket machines, via the app 'DOT billetter' or on citypass.dk



DOT Din Offentlige Transport

BUSES, METRO & TRAINS IN COPENHAGEN

Monday - Friday. Weekends only line A, B C & F on the S-train system



PRACTICAL INFORMATION

BANKS AND ATMS

Banks are generally open between 10:00 and 16:00 Mon-Fri (Thu until 18:00). Some exchange bureaux stay open until 20:00. You can withdraw Danish currency from all ATMs. Most ATMs and many stores accept international credit cards.

BOX OFFICES

Tickets for most performances can be purchased online from: www.ticketmaster.dk or call: +45 70 15 65 65 Mon-Fri 10:00-17:00. The Royal Danish Theatre: www.kglteater.dk or call +45 33 69 69 69 Mon-Fri 9.30-16:00.

DISABLED VISITORS

For information on disabled access and facilities visit www.godadgang.dk

EMERGENCIES

For ambulance and fire services, call 112. For police, call 114. Emergency calls from public phone booths are free.

FLIGHT INFORMATION

For arrivals, departures and flight tables: www.cph.dk or download the CPH Airport app. **LOST CREDIT CARDS** Dankort, *Visa*/*Dankort* og *Visa Electron*: Phone: +45 44 89 29 29. *MasterCard* og *Visa*: Phone: +45 44 89 27 50.

LOST PROPERTY

Metro: Phone: +45 70 15 16 15. www.m.dk. Trains and S-trains: Phone: +45 70 13 14 15. www.dsb.dk. Police: Phone: +45 38 74 88 22. Email: kbh-hittegods@politi.dk

MEDICAL CARE

Phone 1813. The hotline is staffed 24/7.

EMERGENCY WARDS

The following hospitals have 24-hour emergency wards:

- Bispebjerg Hospital, Bispebjerg Bakke 23.
- Hvidovre Hospital, Kettegårds Allé 30 2650 Hvidovre.
- Herlev Hospital, Herlev Ringvej 75, 2730 Herlev.
- Nordsjællands Hospital, Dyrehavevej 29 3400 Hillerød.

Please note that emergency wards are generally only open to patients who have called 1813 in advance. Wait time must be expected. For emergency dental care call 1813 and ask for nearest emergency dental clinic.

PHARMACIES.

Pharmacies often follow regular shopping hours. Opposite the central station you find Steno Apotek, which is open 24/7. Address: Vesterbrogade 6C.

SHOPPING HOURS

Shopping hours vary between Mon-Thu 10:00-18:00, Fri 10:00-20:00 and Sat 10:00-17:00. Department stores and some boutiques are open on Sundays. Supermarkets are open all days, often until 20:00/22:00. Corner stores are often open 24/7.

SPEED LIMITS

50 kph/30mph in urban areas, 80kph/50mph on major roads and 130kph/80mph on motorways (or 110kph/68mph on some stretches).

TOURIST INFORMATION

Copenhagen Visitors Centre, Vesterbrogade 4. Phone: +45 70 22 24 42 (Opposite the Central Station) www.visitcopenhagen.dk

TRAVEL PLANNER

For information and travel planning with public transport in Denmark, visit www.rejseplanen.dk or download the Rejseplanen app.

Published by: Guide Forlaget ApS
Text: CopenhagenEditors.com
Desktopping: *Specialtrykkeriet Arco*
Maps: *Krak*
Photos: *Copenhagen Media Center - Wonderful Copenhagen, DenmarkMediaCenter - VisitDenmark, CopenhagenEditors.com, iStock or as stated*
Print: *Stibo*
No part of this guide may be reproduced without written permission from the publisher. Without responsibility for possible errors and changes.
Copenhagen Tourist® Ystadvej 12 DK-2850 Nærum



MAP OF NORTH ZEALAND



Amalienborg slot (palace)	F6	Fredensborg Slot (palace)	E3
Anniske	C3	Frederiksborgmuseerne	F6
Arresø (lake)	C3	Frederiksborg Slot (castle)	DE3
Asserbo	B2	Frederikssund	C5
Bella Centret	F7	Frederiksværk	BC3
Birkerød	E4	Furesø (lake)	E5
Blixen Museum, Karen (Rungstedlund)	F4	Gl. Humlebæk Kro	F3
Blovstrød	E4	Ganløse	D5
Brede	F5	Gentofte	F6
Bregnerød	E5	Gerlev	B5
Charlottenslund	F6	Gilleleje	D1
Circus Museum	E7	Greve	D8
Copenhagen Airport	G7	Gribskov (forest)	DE2-DE3
Danmarks Tekniske Museum	F2	Græsted	D2
Dronningmølle	E1	Guldsmedene i Roskilde	C7
Dyrehaven (deer park and forest)	F5	Gurre	F2
Dyrehavsbakken (amusement park)	G5	Hedehusene	CD7
Elsinore (Helsingør)	FG2	Hellebæk	F2
Espergærde	F3	Hellerup	F6
Esrum	E2	Helsingør (Elsinore)	FG2
Esrum Sø (lake)	E2-E3	Hillerød	DE3
Farum	E5	Holte	EF5
Fields	G7	Hornbæk	E1
		Humlebæk	F3
		Hundested	A3
		Hørsholm	F4

Ishøj	E7	Rådvad	F5
Jyllinge	C6	Rågeleje	C1
Jørnlunde	CD5	Sjælsø (lake)	E4
Karen Blixen Museum	F4	Skibby	B6
Karlebo	E4	Skodsborg	F5
Karlslunde	D8	Skovshoved	F5
Kastrup Lufthavn (Copenhagen Airport)	G7	Skovshoved Hotel	FG5
Klampenborg	FG5	Skuldelev	B5
Kokkedal	F4	Skævinge	C4
Kregme	C3	Slangstrup	CD4
Kronborg Slot (castle)	G2	Sletten	F3
Kulhuse	AB3	Smidstrup	D1
Kvistgård	F3	Snekkersten	F2
KØS (art museum)	D8	Sporvejsmuseet Skjoldenæsholm (tram museum)	A8
Lejre	B7-B8	Stenløse	D5
Lille Værlose	E5	Stenløse	D5
Louisiana (art museum)	F3	Stenløse	D5
Lynby	F5	Stenløse	D5
Lynge	D4-D5	Stenløse	D5
Lynæs	A3	Stenløse	D5
M/S Museet for Søfart (maritime museum)	G2	Stenløse	D5
Museum Nordsælland	D3	Stenløse	D5
Måløv	DE6	Stenløse	D5
Mårum	D2	Stenløse	D5
Nivå	F3	Stenløse	D5
Nordskoven (forest)	B4	Stenløse	D5
Nærum	F5	Stenløse	D5
Nødebo	E3	Stenløse	D5
Osted	B8	Stenløse	D5
Ragnarock	C7	Stenløse	D5
Ringsted Outlet Village	A8	Stenløse	D5
Roskilde	C7	Stenløse	D5
Roskilde Fjord	C6	Stenløse	D5
Rudolph Tegnens Museum	E1	Stenløse	D5
Rungsted	F4	Stenløse	D5
Rungstedlund (Karen Blixen Museum)	F4	Stenløse	D5



MAP OF COPENHAGEN CITY

* Please note: Not all locations on the map are mentioned

Adelgade	J8	Gammeltorv	H9	Lille Kongensgade	J9	Silkegade	J9
Admiralgade	J9-J10	Georg Brandes Plads	H7	Lille Strandstræde	K9	Sjæleboderne	J8
Adolph Steens Alle	E8	Gernersgade	J7-K7	Linnésgade	G8-H8	Skindergade	H9
Ahlefeldtsgade	G8	Gothersgade	G8-J9	Læderstræde	H9	Skoubogade	H9
Amagertorv	H9	Grønnegade	J9	Løngangstræde	H10	Slotsholmsgade	J10
Amaliegade	K8-L7	Grønningen	K7	Lønporten	H8	Sluttergade	H10
Amalienborg Slotsplads	K8	Gråbrødrestræde*	H9	Løvstræde	H9	Smedegade	F8
Andreas Bjørns Gade	L10	Gråbrødretorv	H9	Magstræde	H10	Snaregade	H10
Antonigade	J9	Gåsegade	H10	Martinsvej	E9-F9	Staunings Plads	F10-G9
Asiatisk Plads	K10	H.C. Andersens Boulevard	G10-H11	Meldahlsgade	F10	Stenosgade	F10-F11
Asylgade	J9	Hammerensgade	K7	Mikkel Bryggers Gade	G10-H10	Stokhusgade	J7
Axeltorv	G10	Hammerichsgade	G9-G10	Mikkel Vibes Gade	K10-K11	Store Kannikestræde	H9
Banegårdspladsen	G10-G11	Haregade	J7-K7	Murergade	F8	Store Kirkestræde	J9
Bartholinsgade	G7-G8	Hausegade	H8	Møntergade	J8-J9	Store Kongensgade	J8-K8
Bertel Thorvaldsens Plads	H10	Havnegade	K9-K10	Naboløs	H9-H10	Store Regnegade	J8-J9
Bispetorvet	H9	Heibergsgade	K9	Nansensgade	G8-G9	Store Strandstræde	K9
Bodenhoffs Plads	L9-L10	Herholdts Gade	F10	Nicolai Eigtveds Gade	J11-K10	Strandgade	K10-L10
Boldhusgade	J9-J10	Herluf Trolles Gade	K9	Niels Hemmingsens Gade	H9	Strædet (Kompagnistræde	
Borgergade	J8	Hestemøllestræde	H10	Niels Juels Gade	J10-K10	and Læderstræde	H10-J10
Bornholmsgade	K7	Hindegade	J8-K8	Nikolajgade	J9-J10	Strøget (Frederiksberggade, Nygade,	
Bredgade	K7-K8	Hjertensfrydsgade	J7	Nina Bangs Plads	H9	Vimmelskafte, Amagertorv and	
Bremerholm	J9-J10	Holbergsgade	K9	Ny Adelgade	J9	Østergade)	G10-J9
Brobergsgade	L10	Holmens Kanal	J9-J10	Nybrogade	H10	Suensongade	J7-K7
Brolæggerstræde	H9-H10	Hovedvagtsgade	J9	Nygade	H9	Suhmsgade	H8-H9
Bryghusgade	J11	Hyskenstræde	H9	Nyhavn	K9	Suomisvej	E9-F9
Burmeistersgade	L10	Højbro Plads	J9	Nyropsgade	F9-F10	Svend Trøsts Vej	E9-E10
Børsen	J10	Inderhavnsbroen	K9-L9	Nytorv	H9-H10	Sværtgade	J9
Børsgade	J10	Israels Plads	G8	Ny Vestergade	H10	Sølvgade	H7-J7-J8
Bådsmandsstræde	K10-L10	Jakob Danneferds Vej	G8	Ny Østergade	J9	Sølvtorvet	H7
Carl Plougs Vej	E9-E10	Jarmers Plads	E8	Nørre Farimagsgade	G8-G9	Søren Kierkegaards Plads	J10-J11
Charlotte Ammundsens Plads	G8	Jens Kofods Gade	E9	Nørregade	G9-H9	Søtorvet	G8
Christiania	L10	Jernbanegade	G9	Nørre Søgade	F8-F9	Teglårdstræde	G9
Christian IX's Gade	J8-J9	Julius Thomsens Gade	G10	Nørre Voldgade	G9	Thorupsgade	F8
Christiansborg Slot	J10	Kattesundet	E8-E9	Ofelia Plads	L8	Tigergade	K7
Christianshavns Kanal	K10	Kjældes Gade	G10-H10	Ole Suhrs Gade	G7-H7	Timiansgade	J7
Christianshavns Torv	K11	Klareboderne	F8-G8	Olfert Fischers Gade	J7-K7	Toldbodgade	K8-L8
Citypassagen	J9	Kleinsgade	H9	Overgaden Neden Vandet	K10-K11	Tordenskjoldsgade	K9-K10
Cort Adelers Gade	K9	Klerkegade	H8-F9	Palægade	J8-K9	Tørnebuskegade	H8
Dahlerupsgade	F9	Klosterstræde	J7-J8	Peder Hvitefeldts Stræde	H8-H9	Trangravsvej	L9
Danas Plads	E9	Knabrostræde	K9-K10	Peder Skrams Gade		Trommesalen	F10-F11
Dantes Plads	H10	Knapstræde	J9	Pilestræde	J9	Turesensgade	F9-G9
Dronningens Tværgade	J8-K8	Knippelsbrogade	H9-H10	Pistolstræde	J9	Tøjhusgade	J10
Dronning Louises Bro	F7-G8	Kompagnistræde	K10	Poul Ankers Gade	K7	Tømregerade	F8
Dybensgade	J9	Kongens Nytorv	H9-H10	Pustervig	H8-H9	Valkendorfs Gade	H9
Dyrkøb	H9	Kristen Bernikows Gade	J9	Ravnsborggade	F7	Vandkunsten	H10
Elsdyrsgade	J7-K7	Krokodillegade	J7-K7	Rigsgade	J7	Ved Stranden	J9-J10
Energiens Torv	F9	Kronprinsensgade	J9	Rigsdagsgården	J10	Ved Vesterport	F10-G10
Esplanaden	K7-L7	Kronprinsessergade	J7-J8	Rosenborggade	H8	Vendersgade	G8
Ewaldsgade	F8-F9	Krusemyntegade	J7	Rosengade	J7	Vester Farimagsgade	F10-G9
Farvergade	H10	Krystalgade	H8-H9	Rosengården	H8-H9	Vestergade	G10-H9
Filippavej	F9	Krøyers Plads	J7-K7	Rævegade	J7-K7	Vester Søgade	F9-F10
Fiolstræde	H8-H9	Kultortorvet	K9-L10	Rømsgade	G8	Vester Voldgade	G10-H10
Fortunstræde	J9	Kvæsthusgade	H8	Rørholmssgade	G7-H7	Vimmelskafte	H9
Fredericiagade	J7-K8	Købmageregade	G10	Rådhuspladsen	G10	Vindebrogade	H10
Frederiksberggade	G10-H10	Laksegade	H10	Rådhusstræde	H10	Vingårdstræde	J9
Frederiksborggade	G8	Landemærket	J9-J10	Sankt Annæ Gade	K10-L11	Vodroffslund	E9-E10
Frederiksholms Kanal	H10	Landgreven	H8-H9	Sankt Gertruds Stræde	H8	Vognmagergade	H8-H9
Fælledvej	F7	Larsbjørnsstræde	J8	Sankt Hans Gade	F7-G7	Wesselsgade	F8
Fælledvejens Passage	F7	Larsens Plads	G9	Sankt Jørgens Allé	F10-F11	Wildersgade	K10-K11
Gammel Mønt	J9	Larslejsstræde	L8	Sankt Markus Alle	E9	Worsaaesvej	E8
Gammel Strand	H9-H10	Lavendelstræde	G9	Sankt Pauls Gade	J7	Østergade	J9
Gammeltoftsgade	G7-H7	Lille Kannikestræde	G10-H10	Sankt Peders Stræde	G9-H9	Øster Voldgade	H8-J7
		Lille Kirkestræde	H9	Schacksgade	G9	Åbenrå	H8
			J9	Schlepppegrellsgade	F7-G7		



F

G

H

J

K

L



8

10

11

Map legend:

- Map bullit
- Harbour Bus
- Metro
- Cityringen Metro (Åbner sommer 2019)

FUR FASHION INTERIOR LIFESTYLE

SUPERIOR
MODEL
FURK CO

BACH

COPENHAGEN

HOVEDVAGTSCADE 6
1103 COPENHAGEN
WWW.BACHCOPENHAGEN.COM

TIVOLI
.....

Welcome to Tivoli Gardens



A world of its own in the heart of Copenhagen

Tivoli Gardens in the center of Copenhagen is truly a place for all ages and preferences: rides, entertainment, scenery and Copenhagen's biggest dining spot with more than 40 restaurants, ranging from gourmet style to delicious fast food.

Stroll through the beautiful gardens, enjoy an excellent dinner or see a show or an outdoor concert. There's always something going on in Tivoli.



BUCHERER

FINE JEWELLERY

B DIMENSION COLLECTION

Exclusively available in all Bucherer stores
1001 København - Østergade 52 - [bucherer.com](https://www.bucherer.com)