

2019-2020 COPENHAGEN

# CITY GUIDE

FREE COPY



**Shopping & dining**  
**Museums & attractions**

**City Map**



# *Need Cash* *Visit Euronet*

Find us on Google Map

Euronet's ATMs are placed in airports, railway stations, pedestrian zones, shopping centers, hotels, and other high traffic locations.



?  
ATMs

S



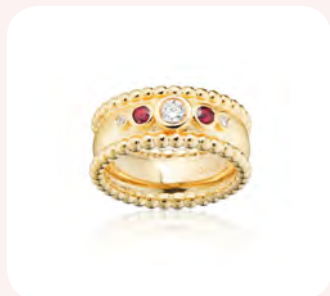
Get local currency at any of the ATMs or Euro at the airport.  
Search for „Euronet ATM Copenhagen”.  
[www.euronetworldwide.com](http://www.euronetworldwide.com)



# ☆☆ Milas Jewellery



## Dreams of gold made by hand

Milas Jewellery is a shop and goldsmith studio in the heart of old Copenhagen. The jewellery is hand-crafted using exquisite materials, creating personal treasures of gold, diamonds and other precious stones in wonderful colours. Milas Jewellery was established in 1995.



Kompagnistræde 8, [www.milas.dk](http://www.milas.dk)  

Map **86**

KENZO PARIS

DONDUP

IH NOM UH NIT

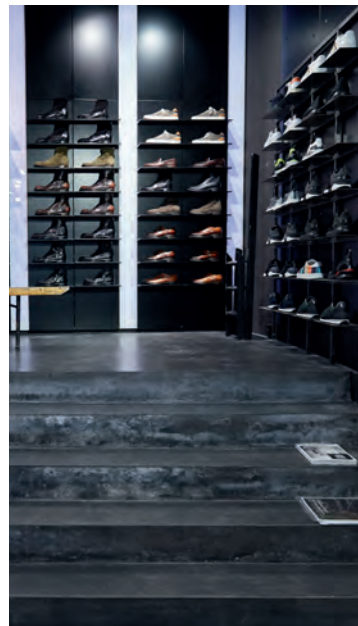
PARIS

Paul Smith

C.P.  
COMPANY

VERSACE  
COLLECTION

FIND THEM ALL AT



Gammel Mønt 1 • 1117 København K  
Tlf. 33 11 01 12 • [www.axel.dk](http://www.axel.dk)

AXEL

Map **60**





HAPPY HEARTS COLLECTION

*Chopard*

THE ARTISAN OF EMOTIONS - SINCE 1860

**stenstrup**  
WATCHES & JEWELLERY

Østergade 26 Tlf. 3315 2422  
1100 København K [stenstrupjuveler.dk](http://stenstrupjuveler.dk)

Map 88

HOUSE OF  
AMBER

SINCE 1933



House of Amber introducing

BLOSSOM COLLECTION

In shops May 2019



Copenhagen Amber Museum & Shop by Nyhavn, Kongens Nytorv 2  
House of Amber on Stroegat, Nygade 6  
House of Amber by Tivoli, Vesterbrogade 1A

[HOUSEOFAMBER.COM](http://HOUSEOFAMBER.COM)

Map 80



# Get together. Over coffee.

Join us for a latte, cappuccino or your Starbucks favourite. We look forward to seeing you and to making your drink exactly the way you like it.

Locate your nearest store at  
[www.starbucks.com/store-locator](http://www.starbucks.com/store-locator)



**STARBUCKS®**

Map **55**

© 2019 Starbucks Coffee Company Ltd. All rights reserved.

## CONTENTS



- 10** Copenhagen Urban Districts
- 19** Shopping secrets
- 30** Taste the city
- 44** Museums & Attractions
- 54** Practical information
- 58** Map North Zealand
- 60** Metro and train
- 63** Map Copenhagen



Published by: *Guide Forlaget ApS*  
 Text: *CopenhagenEditors.com*  
 Layout & desktopping: *Specialtrykkeriet Arco*  
 Maps: *Krak*  
 Photos: *Copenhagen Media Center - Wonderful Copenhagen, DenmarkMediaCenter - VisitDenmark, CopenhagenEditors.com, iStock or as stated*  
 Print: *Specialtrykkeriet Arco*

*No part of this guide may be reproduced without written permission from the publisher.  
 Without responsibility for possible errors and changes.*

Copenhagen Tourist® Ystadvej 12 DK-2850 Nærum

# WELCOME

Open, easygoing and liveable, Copenhagen is a city designed for people. With its popular green parks and streets made for pedal-power, Copenhagen invites you to explore its sights and neighbourhoods by foot, bicycle, kayak and waterbus. Copenhagen is a city with quality of life, of world-class dining and innovative New Nordic Cuisine. This issue of 'Copenhagen Tourist' lets you discover some of the very best the Danish capital has to offer and introduces you to the city's great classic attractions as well as new, cutting edge urban landmarks.

**ENJOY!**

## Welcome to TIVOLIHALLEN

Tivolihallen has been serving Copenhagen since 1791.

We offer a wide variety of open-faced sandwiches (smørrebrød) both for lunch and for dinner.

We are open from 11:30-9:30 pm Monday-Saturday.

For dinner we also have an exciting selection of time-honored traditional Danish meals, and offer a sampler "A taste of Denmark", which will let you taste some of our favorites.

Visit us for a true Copenhagen experience in Danish Cuisine.

We are listed in in the book: "1001 Restaurants You Must Experience Before You Die" where only 4 Danish restaurants are listed.

Vester Voldgade 91, 1552 København V  
 Tel. + 45 3311 0160, [www.tivolihallen.dk](http://www.tivolihallen.dk)

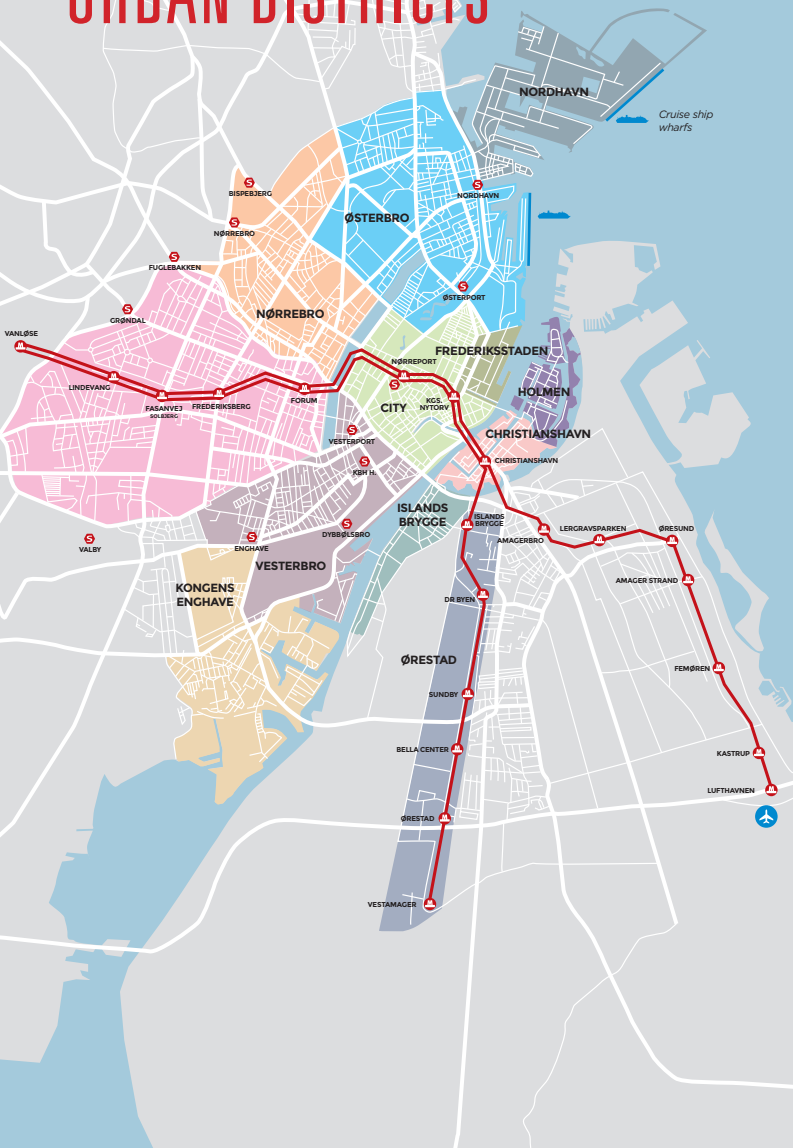
*We look forward to seeing you!*





# COPENHAGEN

## URBAN DISTRICTS



### CITY CENTRE

#### A square mile of boutique shopping

Copenhagen's walkable city centre offers a square mile of shopping and historic attractions. Explore the many side streets with quaint town-house boutique and warm-lit cafés and restaurants.

### FREDERIKSSTADEN

#### Art spaces and design stores

Art galleries and design stores line the main street, Bredgade, in one of northern Europe's largest Rococo districts, Frederiksstad. Here you also find the design museum and the Royal Palace, Amalienborg.

### VESTERBRO

#### Rough and tumble in the Meatpacking District

An on-the-move district known for its late-night clubbing and urban dining, not least in the Meatpacking District, Kødbyen. For laidback living head to Istedgade and the streets around Værnedamsvej.

### NØRREBRO

#### Home of urban cool

The district is home to some of Copenhagen's most talked-about hipster hangouts. Head down Ravnsborggade, Elmegade, Blågårdsgade and Jægersborggade for community living and cool hunting.



## CHRISTIANSBORG PALACE

### — Visit the Queen's Glittering Halls

Christiansborg Palace is one of the world's few working palaces which you can visit. In The Royal Representation rooms, the Queen receives kings, queens and presidents from foreign countries. She receives the people in audience and hosts gala dinners. The renowned tapestries from 2000 adorn The Great Hall and tell 1000 years of Danish history. Visit The Royal Reception Rooms and The Royal Stables which are both still in use today, and explore The Royal Kitchen, and the Medieval castle ruins beneath the palace.



Map 20



# 10% Discount for foreign visitors

Magasin du Nord offers an exclusive 10% discount\* for all foreign visitors. Simply present your valid passport, a national identity card or solid proof of a foreign address at the cash register.

HOUSE OF MOST  
★  
**Magasin**  
— LOVED BRANDS

**Magasin du Nord** is the home of some of the most recognized and loved Scandinavian and international brands spanning clothing for women, men and children, lifestyle products, Danish design, perfume, beauty products and accessories as well as cafés, food and wine.



Furthermore, all non-EU residents can save from 20-27% on their purchases (10%+your tax refund).



# Papercut Paradise

Fairytales were not Hans Christian Andersen's sole art form, as Vincent Van Gogh, a great admirer of his illustrations and papercuts, well knew. Often while talking or telling stories, Andersen made papercuts that he gave to friends and acquaintances – his early designs were not appreciated, but around 1840, when the writer became famous, people started saving them.

## Old tradition

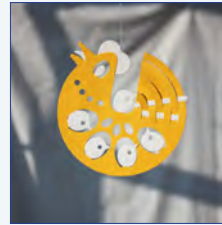
Inspired perhaps by fairytale author Andersen, the papercut or paper art tradition is very old, dating back in Europe to the 16th century and still going strong in Denmark, especially around the festive season.

The visitor will find these cardboard ornaments in homes all round the country, throughout the year, designs changing from season to season.

In wintertime, the decorations show Christmas figures and situations, in the spring you will find Easter designs and during the summer and autumn seasonal designs decorate most homes in the form of papercuts or mobiles.



# Papercut Paradise



In central Copenhagen, **Danish Art & Christmas Shop** is the absolute mecca for papercut buffs, offering a wide range of cutouts and mobiles of just everything from ladybirds and tulips to frames featuring angels, dancers and flowers and hearts with trees and Santa figures, cat and heart mobiles, cutouts of trees and pixies – in all imaginable shapes and sizes, oval, round or square.



## Danish Art & Christmas Shop

Danish designed and traditional handmade Christmas-ornaments and paper cuts for all seasons

Knabrostræde 3, 1210 Copenhagen K  
[www.danishshop.dk](http://www.danishshop.dk) | phone (+45) 33 32 31 61 Map 15

# SAVE UP TO 70% ON FAMOUS BRAND PRODUCTS



Come and find your favourite designer brands and save up to 70% on the recommended retail price all year round at Langelinie Outlet. At our unique location, which offers beautiful views of Copenhagen, you can enjoy hot & cold drinks and sandwiches in the café or sandwich bar as well as access to 50 different brands. Parking is free. There is something for everyone. Here you'll find everything from Danish design to iconic fashion brands as well as your preferred sports and casual wear.



Langelinie Outlet Centerforening • Langelinie Allé 40  
2100 - Copenhagen • [www.langelinie-outlet.dk](http://www.langelinie-outlet.dk)



## ME & AUDREY

*Me & Audrey offers exclusively handcrafted jewellery inspired by the clean and classic style of Audrey Hepburn.*

*Located in the city centre across the Kings Garden the boutique has an intimate atmosphere where every piece of handcrafted jewellery celebrates the delightfulness and simplicity of the fashion icon.*

*Gold, diamonds, silver and pearls melt together in exquisite pieces proving that true classics never go out of style. Jewellery made from coloured rosecut diamonds as well as jewellery made from diamond beads are among the signature pieces.*

## ME & AUDREY

JEWELLERY

CHRISTIAN IX'S GADE 7 - DK-1111 COPENHAGEN K - TEL +45 2095 4151

[WWW.MEANDAUDREY.COM](http://WWW.MEANDAUDREY.COM)





A black and white photograph of a vintage delivery truck, likely from the 1920s, parked in a field. The truck is dark-colored with a white cab and a large cargo box. The cargo box has the text "C.F. GEDDIS &amp; CO." and "BENTLEY-LAUREL" printed on it, along with "PETERborough, ONT." below. The number "871" is visible on the side of the cab. A driver wearing a cap and a light-colored uniform is seated in the cab. The photograph is mounted within a gold-colored frame.



GEISMARS  
SINCE 1988

(BETWEEN KONGENS NYTORV AND AMALIENBORG CASTLE - A BEAUTIFUL WALK)

THERE ARE MANY INSPIRING SIDE STREETS TO  
DISCOVER CLOSE TO THE COPENHAGEN LANDMARK  
ATTRACTIONS



Map 56



EMQUIES  HOLSTEIN

jewellery · copenhagen

Pay a visit to this charming goldsmith studio where designers Diana Holstein & Hanan Emquies make handcrafted jewelry with a modern twist and a keen eye on tradition.

Lille Kirkestræde 5

close to Amagertory · Phone +45 3212 1389

webshop

www.emquies-holstein.com

### Bustling high street with The Round Tower

Branching off from Strøget and brimming with lofty high-street fashion stores, Købmagergade leads to the Round Tower and to the city's food

halls, Torvehallerne. Remember to discover the side streets with fashion and design, such as Kronprinsensgade/Pilestræde, and the quaint Gråbrødretorv square with its colourful townhouses.

## PILESTRÆDE

Once lined with late-night dive bars, the street now curates one of the city's finest blends of fashion stores, design boutiques and on-trend eateries.



## NIKOLAJ PLADS

A hidden gem and home to a church-turned-art-centre, Nikolaj Kunsthal. Branching out from the leafy square are narrow streets with coveted restaurants.



## KRONPRINSENSGADE

A fashion street with flagship stores, mainly local Danish brands. The street, which spills into Pilestræde, has attracted fashionistas for more than two decades.



NO99  
KAREN FLY  
LENE HALD

Visit the Nordic-cozy goldsmith studio where creativity flourishes. Here you can find a wide selection of elegant whimsical handmade jewelry of high quality. Situated nearby the busy Nørreport station with a view to Rosenborg castle and across from the Kings Garden.

Open TUE-FRI 12-17.30 & SAT 11-15  
GOTHERSGADE 99 · DK-1123 KØBENHAVN K  
WWW.NO99.DK · Instagram LENEHALD.DK / KARENFLYNO99 Map 62



ORIGINAL DANISH  
DESIGN JEWELRY

Address:  
Gothersgade 54, Copenhagen, Denmark,  
Badstuegade 8, Aarhus, Denmark  
www.janekoenig.com Map 5

Jane Koenig





**COME AND SEE**  
what others don't have

**ALPACAHUSET**  
is the only exclusive  
shop in Denmark  
where you can find  
jumpers and other  
articles of clothing  
in pima cotton,  
cashmere and  
the finest alpaca

**ALPACAHUSET**

Map **4**

Opening hours: Monday Closed, Tuesday - Friday 11.00 - 17.00  
and Saturday 10.00 - 14.00  
Store Kongensgade 90 • 1264 Copenhagen K  
Tel.: 3314 1228 • info@alpcahuset.dk • www.alpcahuset.dk

**TIVOLI**  
.....

# Welcome to Tivoli Gardens



**Organic • Recycled • Fair Trade • Sustainable • Natural**

**Copenhagen's green lifestyle store  
since 2008**

Unique shop with all you need for home, office, body and fun  
Eco-gifts and souvenirs

We make it easy to be **green**

**Nørre Farimagsgade 82  
1364 Copenhagen K  
Tel.: +45 32 12 06 12  
info@ecoego.dk  
www.ecoego.dk**

**ECOEGO**  
green living made easy



Map **78**

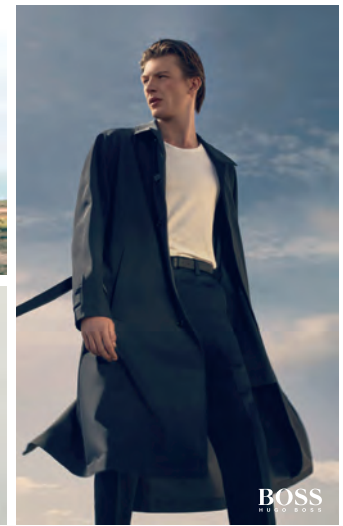
## A world of its own in the heart of Copenhagen

Tivoli Gardens in the center of Copenhagen is truly a  
place for all ages and preferences: rides, entertainment,  
scenery and Copenhagen's biggest dining spot with  
more than 40 restaurants, ranging from gourmet style  
to delicious fast food.

Stroll through the beautiful gardens, enjoy an excellent  
dinner or see a show or an outdoor concert. There's  
always something going on in Tivoli.

**Vesterbrogade 3, 1630 Copenhagen V • tivoligardens.com**

Map **90**



# RINGSTED OUTLET VILLAGE

**Visit Ringsted Outlet for a day of unique leisure shopping at Denmark's only international outlet village**

Enjoy great savings of 30-70% in top brand flagship outlets such as BOSS, NIKE, LEVI'S, ADIDAS, LACOSTE, SUPERDRY, LE CREUSET, PEAK PERFORMANCE, GANT, GUESS, WOLFORD, PUMA and many more of your favorite brands. Tax Free shopping is offered in most stores.

Ringsted Outlet offers a great variety of fashion for men and women, jeans, children's wear, sportswear, luggage and home & living.

Situated in the beautiful Danish countryside just 40 minutes outside Copenhagen, Ringsted Outlet is part of the typical small Danish village of Ringsted, which is rich in history and everyday life.

The Outlet is located right at exit 36N on the E20 and with 4 trains from Copenhagen every hour, Ringsted is easily accessible by both car and train. From the station the local bus routes will take you to the village.

## EXTRA 10% OFF

Bring this advert to our LEGO® Wear Outlet Store to receive our special voucher book offering an additional 10% off in participating stores.

We look forward to welcoming you at Ringsted Outlet

Monday - Friday 10-19 | Saturday - Sunday 10-18  
June - July - August: Monday - Friday 9-19 | Saturday - Sunday 9-18  
Ringsted Outlet | Klosterparken Allé 1 | 4100 Ringsted | ringstedoutlet.dk





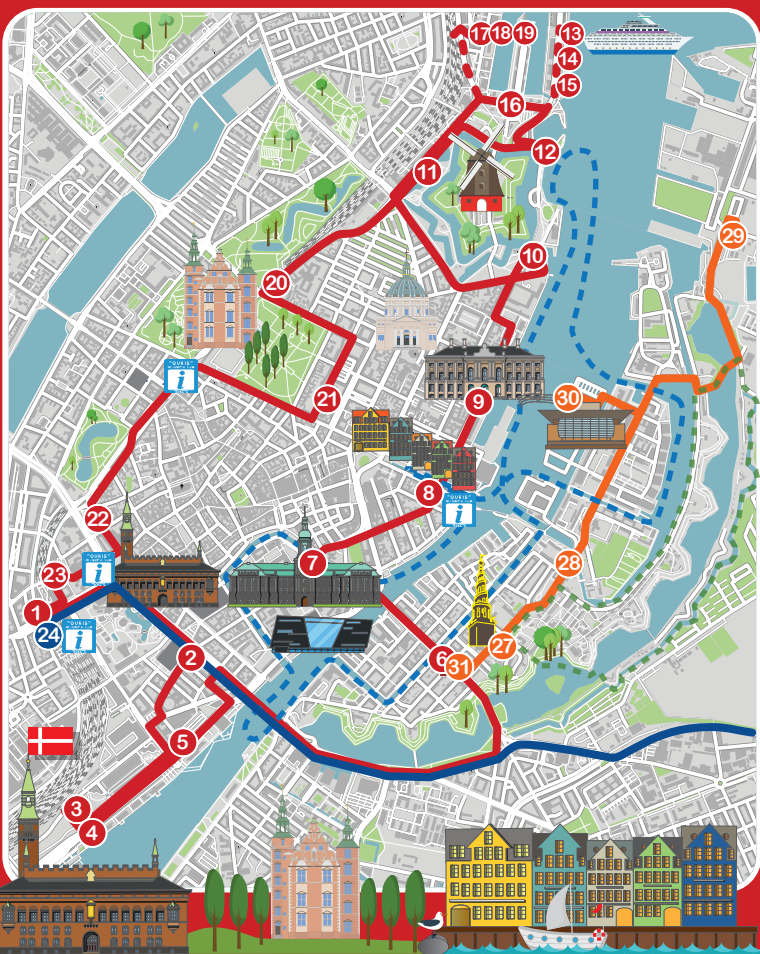
# RED BUSES HOP-ON HOP-OFF

**BUS  
&  
BOAT**

**CHILDREN  
0-14 FREE**



Discover the beautiful city of Copenhagen with our open air double -decker buses! Hop on and off as much as you like at any of our conveniently located stops around the city. Explore the city's must-see attractions and activities at your own pace!



## Danish Arts & Crafts **Kunst & Håndværk**

Map **12**

Open: Mon-Thu 11.00-16.00  
Fri 11.00-18.00, Sat 11.00 -16.00

Landemærket 9 - next to the Round Tower  
Phone: +45 3311 6881  
[www.kunstoghaandvaerk.dk](http://www.kunstoghaandvaerk.dk)  
[www.facebook.com/kunstoghaandvaerk.dk](https://www.facebook.com/kunstoghaandvaerk.dk)



**A unique collection of exclusive Danish arts and crafts run by six Danish artists. In addition to their own creations, the shop is home to selected works of more than 50 independent Danish artists. Est. 1977.**

**You will find a wide range of arts and crafts in glass, pottery, porcelain, jewellery, clothes, scarfs, knitwear, bags and belts. You will easily find a present for yourself or Danish design to bring back home.**



### SIGHTSEEING BY BOAT

Experience Copenhagen from the waterside, on board a blue NETTO-BOAT.

Make yourself comfortable and enjoy the scenery, while our guide tells about the beautiful sights in Danish, English and German.

The tour starts at Holmens Church or Nyhavn (Heibergsgade) Duration: 60 min.

Prices: Adults 50 DKK - Children 20 DKK.

Map **23**



# Christmas Shop

— in the heart of Copenhagen

Pixies - Posters -  
Music - Christmas cards  
Paper cutouts



## Danish Art & Christmas Shop

Danish designed and traditional handmade  
Christmas-ornaments and paper cuts for all seasons

Knabrostræde 3, 1210 Copenhagen K  
www.danishshop.dk | phone (+45) 33 32 31 61 Map 15

Ripley's Believe It or Not!



GENUINE HUMAN  
SHRUNKEN HEAD

WE HAVE THE WEIRDEST  
STUFF IN COPENHAGEN!

Map 17

RÅDHUSPLADSEN 57, CITY HALL SQUARE | RIPLEYS.DK |

Map 18

EUROPE'S  
ONLY



ATTRACTION

ØSTERGADE 16, STRØGET



© Ripley Entertainment Inc.



# TASTE THE CITY

## DISCOVER THE FLAVOURS OF COPENHAGEN



### SMØRREBRØD Danish open-faced sandwiches

The elaborately designed toppings of Danish open-faced sandwiches are an art form. A classic way to enjoy these lunchtime favourites is to start with cured or fried fish, continue with cold cut and finish with cheese. And don't forget a cool glass of craft beer!

### DANISH PASTRY

#### Fluffy, butter-baked delights

The best place to try fluffy, butter baked Danish pastries is – surprise! – at a baker shop. Many bakers serve coffees. And some of the most dedicated baker shops have their own cafés. Head to the hipster hives of Nørrebro and Vesterbro for high-level baking. But all baker chains offer Danish pastries.



### STREET FOOD A world of choice

Open from morning to late evening, the Bridge Street Kitchen and Reffen street food markets offer a wide choice of cuisines. Grab a waterfront deck chair and enjoy a veggie or seafood bowl – or goodies from the barbecue.



### NEW NORDIC Farm-fresh and foraged

New Nordic Cuisine has been developed around seasonal local produce fresh from the market and fresh from the Nordic wilderness. Subtle combinations of ingredients that are simple and honest. Here a dish from a restaurant in the COFOCO chain.



# WHICH RESTAURANTS ARE YOU LOOKING FOR WHEN TRAVELING?

We are a family of restaurants found all over Copenhagen and each location has it's own unique menu and interior design.

At one restaurant you can enjoy a modern European fare, another offers sustainable greens and a third may specialize in Italian cooking.

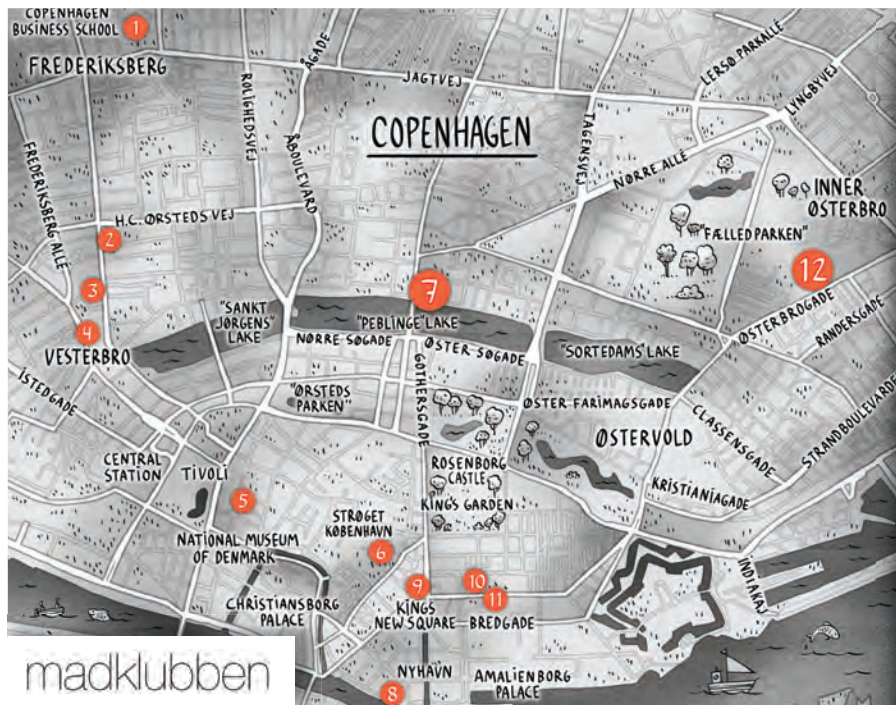


All of our restaurants are open for **dinner** and selected restaurants are open for **breakfast and lunch** as well.



Madklubben is Danish for "The Food Club" because we care equally about the culinary and the social aspect of dining out.

Explore all of our tasty locations on the map, through [madklubben.dk](https://www.madklubben.dk) and [@madklubben](https://www.instagram.com/madklubben)



- |   |   |
|---|---|
| <p><b>1 MADKLUBBEN FREDERIKSBERG</b><br/>SOLBJERGVEJ 6<br/>2000 FREDERIKSBERG<br/>PHONE: +45 38414170</p>     | <p><b>7 FRANKIE'S PIZZA NØRREBRO</b><br/>SØRTEDAM DOSSERING 5<br/>2200 COPENHAGEN N<br/>PHONE: +45 38414172</p>   |
| <p><b>2 HANZØ</b><br/>GAMMEL KONGEVEJ 96<br/>1850 FREDERIKSBERG<br/>PHONE: +45 38414167</p>                   | <p><b>7 BAR NEXT DOOR</b><br/>SØRTEDAM DOSSERING 3<br/>2200 COPENHAGEN N<br/>PHONE: +45 38414130</p>              |
| <p><b>3 FRANKIE'S PIZZA VESTERBRO</b><br/>VÆRNEDAMSGADE 14<br/>1619 COPENHAGEN V<br/>PHONE: +45 38414172</p>  | <p><b>8 TONY'S HAVNEGADE</b><br/>HAVNEGADE 47<br/>1058 COPENHAGEN K<br/>PHONE: +45 33133307</p>                   |
| <p><b>4 MADKLUBBEN VESTERBRO</b><br/>VESTERBROGADE 62<br/>1620 COPENHAGEN V<br/>PHONE: +45 38414143</p>       | <p><b>9 BISTRO ROYAL</b><br/>KONGENS NYTORV 26<br/>1050 COPENHAGEN K<br/>PHONE: +45 38414164</p>                  |
| <p><b>5 MAMMA'S</b><br/>REGNBUE PLADSEN 3-5<br/>1550 COPENHAGEN V<br/>PHONE: +45 38414149</p>                 | <p><b>10 BAZAAR</b><br/>DRONNINGENS TVERGADE 21<br/>1302 COPENHAGEN K<br/>PHONE: +45 38414171</p>                 |
| <p><b>6 MADKLUBBEN STEAK</b><br/>PILESTRADE 23<br/>1112 COPENHAGEN K<br/>PHONE: +45 33133334</p>              | <p><b>11 MADKLUBBEN BISTRO-DE-LUXE</b><br/>STORE KONGENSGADE 66<br/>1264 COPENHAGEN K<br/>PHONE: +45 33323234</p> |
| <p><b>7 ALABAMA SOCIAL</b><br/>SØRTEDAM DOSSERING 3<br/>2200 COPENHAGEN N<br/>PHONE: +45 38414166</p>         | <p><b>12 FRANKIE'S PIZZA ØSTERBRO</b><br/>ØSTERBROGADE 79<br/>2100 COPENHAGEN Ø<br/>PHONE: +45 38414172</p>       |
| <p><b>7 FOOD CLUB</b><br/>SØRTEDAM DOSSERING 7 C, COURTYARD<br/>2200 COPENHAGEN N<br/>PHONE: +45 38424264</p> | <p><b>12 MADKLUBBEN ØSTERBRO</b><br/>ØSTERBROGADE 79, 1ST FLOOR<br/>2100 COPENHAGEN Ø<br/>PHONE: +45 38414173</p> |

madklubben



## Afternoon tea at Perch



Opening hours  
MON-THU 9.00 - 17.30, FRI 9.00 - 19.00, SAT 9.30 - 16.00  
Tea Room reservation at [tearoom@perchstearoom.dk](mailto:tearoom@perchstearoom.dk)  
or +45 33 15 35 62  
Kronprinsensgade 5, 1114 København K

Relax and refresh yourself with a delightful cup of tea in the elegant and cosy setting of Perch's Tea Salon. Perch's has over 175 years of experience, and our competent staff is capable of guiding you through the huge tea list of 150 different teas. Enjoy your tea with freshly baked scones with lemon curd; dainty and delicious finger sandwiches, and an assortment of cakes and pastries.

We're looking forward to welcoming you on the 1st floor of No. 5 Kronprinsensgade.



Map **31**

## JERNBANECAFEEN

*Visit my cozy, old fashioned Danish Pub*

*My guests are young and old, from all over the country - even the whole world. Most guests tell me:*



*This is the very best pub in Copenhagen*

*We always stop by, whenever we are in Cph.*

**Live Music**

**7 pm every**

**Sunday Monday  
Tuesday Wednesday**

*The four generation family, behind the success of The Railroad Pub, dressed in typical clothes of 1930'ies. The pub opened in 1933*

**JERNBANECAFEEN**  
*The Railroad Pub*

Reventlowsgade 16

next to **The Central Station**  
opposite **TIVOLI**  
1651 Copenhagen V

Map **84**

**TIGHT**  
RESTAURANT & BAR

Our Nordic kitchen takes inspiration from the South to create tasteful dishes for lunch and dinner.

3 small dishes  
**149 kr.**



Combine a lunch platter from our selection of small dishes or choose between our large lunch dishes.



An evening in historical surroundings with a charming, authentic atmosphere and delicious cooking. Our friendly staff will welcome you and make sure to give you an exceptional evening.



**50 m from shopping street (Strøget)**

Restaurant Tight, Hyskenstræde 10, 1207 Copenhagen K  
+45 26693999, [tightkbh@gmail.com](mailto:tightkbh@gmail.com) – [www.tight-cph.dk](http://www.tight-cph.dk)

Map **89**





# Large grill buffet

## MENU

- Min. 3 starters and fresh bread
- Min. 15 kinds of meat on the grill
- Large salad bar with min. 50 variants
- Min. 10 kinds of accompaniments

**Eat as much  
as you can**

**DKK. 199,-\***

\*Fr., Sa. and public holidays DKK 219,- Children under 12 years eat at ½ price, and children under 4 years eat free of charge.

Restaurant Flammen  
Nyropsgade 2,  
1602 Copenhagen

Restaurant Flammen  
H. C. Andersens Blvd. 37  
1553 Copenhagen

RESTAURANT  
**FLAMMEN**



For more details and to book your table,  
visit [restaurant-flammen.dk](http://restaurant-flammen.dk)

Map 83



## TIVOLI Food Hall



**Discover a  
unique take on  
international  
dining**



**OPEN ALL YEAR AND WITH FREE ENTRANCE**  
[WWW.TIVOLI.DK/FOODHALL](http://WWW.TIVOLI.DK/FOODHALL)

Map 74





**G1.  
Humlebak  
Kro**

[WWW.GAMLEHUMLEBAEKKRO.DK](http://WWW.GAMLEHUMLEBAEKKRO.DK)



*Home cooked dishes and famous "smørrebrød" served with a smile in a cosy atmosphere. We are open every day from 12 p.m. Monday closed - then we rest.*

*200 m. north of Louisiana  
- 8 km. to Elsinore and Culture  
Harbour Kronborg.*

**FOR RESERVATIONS  
PLEASE CALL US ON +45 49 19 02 65**

**Humlebak Strandvej 2A · 3050 Humlebak**

*Map page 58-59 F3*

## STRÆDET

### Laidback Cafes and townhouse boutiques

Running parallel with Strøget, the city's main high street, Strædet, lets

you relax over coffee or lunch in the candlelit cafes. With its many basement boutiques selling arts and crafts the street is ultimately discoverable



## THE SWEETER SIDE OF COPENHAGEN



**DUNKIN'**

**COPENHAGEN CENTRAL STATION  
[WWW.DUNKIN-DONUTS.DK](http://WWW.DUNKIN-DONUTS.DK)**

# COPENHAGENCARD

SEE MORE. PAY LESS.



GET YOUR  
COPENHAGEN  
CARD ON  
YOUR  
SMARTPHONE



Free access  
to 87  
museums and  
attractions

One adult can bring  
along 2 children  
under the age  
of 10 for free

Free transport by train,  
bus and Metro in the  
entire metropolitan area

[WWW.COPENHAGENCARD.COM](http://WWW.COPENHAGENCARD.COM)







## KRONBORG CASTLE — HOME OF HAMLET

Kronborg is a must-see! Hamlet's Castle in Elsinore is a UNESCO World Heritage Site, a Renaissance castle with soaring towers, a huge ball room and damp casemates. There are few sites in the world where so much drama and history has played out. From June to August, Hamlet and his family, friends and enemies move into Kronborg during Hamlet Live. Experience the famous scenes and meet the characters in the chambers and halls. Kronborg is only a 40 minute direct train ride from Copenhagen Central Station.



### TIP

Experience HAMLET LIVE  
at Kronborg Castle  
daily June-August.

Buy your ticket at  
[Kronborg.dk](http://Kronborg.dk)

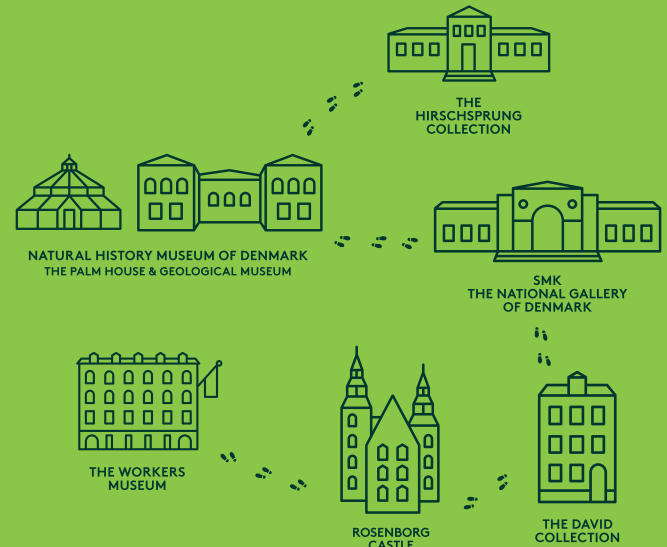
Map page 58-59 F2

[parkmuseerne.dk](http://parkmuseerne.dk)

# 1 TICKET 6 MUSEUMS 50% DISCOUNT

## ONE YEAR - SIX VISITS

Illustration: Pernille Høegh and Pernille Høegh



# MUSEUMS & ATTRACTIONS

Copenhagen offers a rich variety of classical and contemporary collections, many housed in heritage-listed merchant townhouses, romantic palaces and modern galleries. Created by the great names of contemporary architecture, several of them melt into the surrounding parklands and nestle among the sand dunes by the coast, several near Copenhagen.

Children are also always a part of the picture at Danish museums with hands-on activities that allow children to explore the natural world and tomorrow's cutting-edge technology, not least at the city's science and natural history museums and the new National Aquarium Denmark – Den Blå Planet. Children can also discover their artistic talent at workshops at leading art museums, such as the Louisiana Museum of Modern Art, SMK – National Gallery of Denmark and Thorvaldsens Museum.

No visit to Copenhagen is complete without a day in Tivoli – one of the world's most magical amusement parks with white-knuckle rides, parade bands and family fun. And it's right in the heart of town!



## THE DAVID COLLECTION

### Dauids Samling

The museum comprises three permanent collections: European 18th-century art, Danish modern art from 1880-1950 with a fine collection of works by Vilhelm Hammershøi, and Islamic art from the 7th century to ca.1850 – one of the most important collections of Islamic art in the world.

ADMISSION: FREE

### *The David Collection* Dauids Samling

Kronprinsessegade 30,  
1306 Copenhagen K,  
Tel.+45 3373 4949,  
[www.davidmus.dk](http://www.davidmus.dk)

Open: Tue to Sun 10-17,  
Wed 10-21. Monday closed. Map **3**



DAVIDS SAMLING

[www.davidmus.dk](http://www.davidmus.dk)

## Glyptoteket

An Oasis in the Heart of Copenhagen

Ny Carlsberg Glyptotek  
Dantes Plads 7 • 1556 Cph

[glyptoteket.com](http://glyptoteket.com)





**Visit Copenhagen City Hall**, built in the years 1892- 1905. The architect Martin Nyrop was part of the great Arts and Crafts movement and just as Gaudi in Barcelona he created everything from keys, doorknobs to the tower. Take a guided tour or visit the tower, a historic landmark celebrating the Danish constitution from 1849. From the tower there is a great view, overlooking the old city and on a clear day you can see even as far away as the coast of Sweden.



## Copenhagen City Hall

The Tower, **DKK 30**  
Mon-Fri 11:00 am – 2:00 pm  
Sat 12:00 noon

Guided tours, **DKK 50**  
Mon-Fri 1:00 pm  
Sat 10:00 am



## Københavns Rådhus

Tårnet, **30 kr.**  
Man-Fre 11:00 og 14:00  
Lør 12:00

Rundvisning, **50 kr.**  
Man-Fre 10:00 og 15:00  
Lør 11:00

Ticket sales at the information/maingate  
Further info/groups/special tours: +45 3366 2586  
Mail: Rundvisning@kk.dk

Map **28**

# NATIONALMUSEET

Meet The Danes and the Vikings at the National Museum of Denmark and experience world-famous treasures with a starring role in Danish history!

Welcome to the largest museum of Danish culture and history – right in the heart of Copenhagen.

## Meet the Danes

Take a guided tour with a Dane and get a local's personal view on Danish cosiness, happiness and life-work balance. Are Danes really the happiest people in the world? How does the Danish royal family manage to be so popular? Why are there so many cycles in Denmark? Why on earth do Danes think it's safe to leave their babies sleeping in prams on the street while they are in a café? What is that famous Danish liberal-mindedness all about?

## Meet the Vikings

The National Museum's new and very popular exhibition: Meet The Vikings welcomes visitors to the multifaceted universe of the Vikings. The exhibition includes one of Denmark's largest treasure troves of gold and silver jewellery. Join a guided tour and learn more about myth and facts about our famous ancestors.

## For children

Let the kids hunt for the hidden magical button.

Anything can happen when they press it. Statues turn to life, dragons spit fire and ancient skeletons break wind!

You can also visit the Children's Museum, an indoor playground where children can sail across the sea in a Viking ship or cook in the old kitchen. This is a museum where kids can touch absolutely everything!

## Eat Food

With clear references to classic lunch and local dishes, the museum's restaurant serves new interpretations of Danish food.

Map **10**

## ADMISSION

Day Ticket Adult: DKK 95  
Family Ticket  
(1 child + 1 adult) DKK 80  
Child under 18 is free

## OPENING HOURS

October-May:  
Tuesday-Sunday: 10.00-17.00

June-September:  
Monday-Sunday: 10.00-18.00



# LOUISIANA

MUSEUM  
OF  
MODERN  
ART



Louisiana Museum of Modern Art beckons with world-class exhibitions, Danish modernist architecture and the lovely Sculpture Park by the seaside. Famed also for its Café with a panoramic view, Children's Wing and impressive design shop. For more info visit [www.louisiana.dk](http://www.louisiana.dk)

*Map page 58-59 F3*



## MUSEUMS & ATTRACTIONS IN COPENHAGEN

**Amalienborg, Copenhagen.** Tel. (+45) 3312 2186, [amalienborg.dk](http://amalienborg.dk). Open: Christian VIII's Palace: 1 Jan 11-19. 2 Jan-30 Apr Tues-Sun 10-15. 1-31 May daily 10-16. 1 June-31 August daily 10-17. 1 Sep-31 Oct daily 10-16. 1 Nov-31 Dec Tues-Sun 10-15. Book tours of Christian VII's Palace on [amalienborg.dk](http://amalienborg.dk) or in the ticket office in Christian VIII's Palace.



Amalienborg offers two royal experiences that allow you to get close to royal history through the last 250 years. In **Christian VIII's Palace** the museum gives an insight into royal life past and present. From the museum there is access to the magnificent royal reception rooms. **Christian VII's Palace** is where many official festivities are held. Book a guided tour on our website or in our ticket office.

Map **13**

**Folketinget – The Danish Parliament, Christiansborg Palace –** [www.thedanishparliament.dk](http://www.thedanishparliament.dk).



Free guided tours in English 12:00 pm selected Sundays, public holidays and some weekdays during summer. Highlights: The Folketing Chamber and Denmark's first democratic constitution from 1849. You are also introduced to the political system in Denmark. Check and book tours at [www.ft.dk/visit](http://www.ft.dk/visit) or call the Visitors' Service weekdays 8.30 am to 3 pm: +45 3337 3221. Tickets can also be collected at the main entrance from 10 am on the day of a guided tour.

The Tower - Folketinget, Christiansborg Palace - [www.taarnet.dk](http://www.taarnet.dk). A visit to the tower is free of charge and it is open every day except Mondays. Visit the highest tower in Copenhagen and enjoy the amazing view of the city. Find more information at [www.taarnet.dk](http://www.taarnet.dk).

Map **25**



## MUSEUMS & ATTRACTIONS IN COPENHAGEN

**Det Kgl. Bibliotek/Den Sorte Diamant – Royal Danish Library/The Black Diamond,** Søren Kierkegaards Plads, Copenhagen, Tel. 3347 4747, [kultur@kb.dk](mailto:kultur@kb.dk), [www.densortediamant.dk](http://www.densortediamant.dk)



Den Sorte Diamant  
Moderne arkitektur,  
levende kulturscene,  
aktuelle udstillinger, café og  
restaurant – Den Sorte Diamant  
er meget mere end et bibliotek!  
Tjek det aktuelle program online.  
Omvisninger mandage kl. 15.  
**Udstillinger:** man – fre 10-19  
lør 10-18

Den Sorte Diamant  
Modern architecture, live  
events' stage, exhibitions,  
café and restaurant – The Black  
Diamond is much more than a  
library! Stay updated with the  
current event program online.  
Guided tours Mondays 3 pm.  
**Exhibitions:** Mon – Fri 10-19  
Sat 10-18

Map **39**

**Medical Museion, Bredgade 62, Copenhagen.** [www.museion.ku.dk](http://www.museion.ku.dk)  
Open: Tuesday-Friday 10 am – 4 pm. Saturday-Sunday 12 pm – 4 pm



Medical Museion is not for delicate souls – diseases and their treatment have always been dramatic. But if you dare to face how the human body has been understood and treated over time - from Antiquity to the age of the gene - this is the place for you.

Explore the beautiful exhibitions in the historical Royal Academy for Surgeons (from 1787), either on your own or on a guided tour (included in admission fee).

Map **40**

**Rosenborg Castle, Øster Voldgade 4A, Copenhagen, Tel. (+45) 3315 3286, [rosenborgcastle.dk](http://rosenborgcastle.dk).** 2 Jan-15 Apr Tues-Sun 10-15. 16 Apr – 31 May daily 10-16 (closed 29 Apr). 1 June-31 Aug daily 9-17. 1 Sep – 31 Oct daily 10-16. 1 Nov-31 Dec Tues-Sun 10-15.



The beautiful 400-year-old castle is situated in central Copenhagen's popular park, The King's Garden. Impressive art treasures are displayed, and among the main attractions is the Great Hall, which features the coronation throne with three silver lions standing guard. The priceless crown jewels and royal regalia sparkle in the treasury. Book your ticket at [rosenborgcastle.dk](http://rosenborgcastle.dk).

Map **11**

**SMK (National Gallery of Denmark), Sølvgade 48-50, 1327 Copenhagen K**  
Tel. 3374 8494. Open: Tue - Sun 10-18, Wed 10-20. Mondays closed.



SMK viser 700 års  
dansk og international  
kunst – fra den tidlige renæs-  
sance til den helt nye samtids-  
kunst.  
Oplev også kunsten i særudstil-  
linger og arrangementer eller  
Besøg Børnenes Værksted,  
museets KAFETERIA og shop.

SMK shows 700 years  
of Danish and interna-  
tional art – from early Renais-  
sance to cutting-edge contem-  
porary works. You can also ex-  
perience the art through special  
exhibitions and events or visit  
the Children's Workshop,  
KAFETERIA and shop.

Map **30**

# MUSEUMS & ATTRACTIONS BEYOND COPENHAGEN

**The Museum of National History – Frederiksborg Castle, Hillerød, Tel. 4826 0439, [www.dnm.dk](http://www.dnm.dk) – Open daily April-October 10-17, November-March 11-15.**



Frederiksborg Castle in Hillerød was built by King Christian IV in the first decades of the 17th century as the largest Renaissance castle and grounds in Scandinavia. The castle houses The Museum of National History and is ideal for excursions offering cultural experiences, garden strolls and boat tours on the lake.

Map page 58-59 DE3



The Sea Station from Copenhagen

**Under the age of 18 free admission**  
**Bus 203 from Roskilde Station**

**5 original Viking ships** · Boat trips  
Boat yard · Viking crafts · Activities

**VIKING SHIP MUSEUM**

Vindeboder 12 · 4000 Roskilde · Tlf. +45 46 300 200 · [vikingshipmuseum.dk](http://vikingshipmuseum.dk)

Map page 58-59 C7



# CITY PASS

## The easiest ticket for bus, train and metro

City Pass is your all-in-one ticket to Copenhagen's public transportation network which is valid for up to 5 days. City Pass makes it easy to visit popular attractions in Copenhagen City and Greater Copenhagen.

### CITY PASS SMALL FROM 80 DKK

Unlimited travel within  
Copenhagen City,  
including the airport

### CITY PASS LARGE FROM 160 DKK

Unlimited travel within  
Greater Copenhagen,  
including Copenhagen City

**Buy your City Pass at ticket machines, via the app 'DOT billetter' or on [citypass.dk](http://citypass.dk)**



**DOT** Din Offentlige Transport



# GETTING AROUND



## Air-Rail Trains

Link Copenhagen Airport and the Central Station in Copenhagen. The journey takes approx. 14 minutes and trains run every 10 minutes. The Metro also links the airport and central Copenhagen, and takes approx. 15 minutes to Nørreport and run every 5-6 minutes. One way ticket: Dkr 36.

## CPH Card

The CPH Card offers free and unlimited travel by buses, trains and the Metro throughout the Greater Copenhagen region in addition to entrance-fees to 86 museums and attractions. It also allows you discounted prices at a number of activities, restaurants etc. The card is valid for either 24, 48, 72 or 120 hours for both adults and children. [www.visitcopenhagen.dk](http://www.visitcopenhagen.dk) and [www.copenhagencard.dk](http://www.copenhagencard.dk)

## Parking

When parking, visitors can pay with cash or card: Use the pay stations placed in the streets. Important: You need to enter your license plate. Sometimes time-limited parking is free but a special parking disc must be used. These are available at service stations in Denmark. You have to pay for parking at all times from 08:00 on Monday until 17:00 on Saturday. Your parking ticket is valid for the zone in which it was bought and also in any cheaper zones. Note: Your parking is valid for all zones from 18:00 in the evening until 08:00 the next morning because charges are the same everywhere for that time period. [www.kk.dk/parkering](http://www.kk.dk/parkering)

## Public Transportation

S-trains, trains, Metro and buses link the areas of inner and outer Copenhagen. Single tickets or travel cards are valid for all four means of transport and for transfer between them. Copenhagen Airport [www.cph.dk](http://www.cph.dk) Copenhagen Metro [www.m.dk](http://www.m.dk) Copenhagen Central Station [www.hovedbanen.dk](http://www.hovedbanen.dk)

Where to purchase tickets and travel cards Tickets or travel cards can be purchased at most stations, a number of kiosks and at your mobile at 1415.dk Furthermore, you can purchase single tickets from bus drivers, and the City Pass can also be purchased at Copenhagen Airport. [www.moviatrafik.dk](http://www.moviatrafik.dk)

**Harbour Buses** line 991, 992 and 993 interconnect the city daily. Discount cards, 24-hour tickets and CPH Cards are all valid for the Harbour Bus. Cash tickets are available on board.

## Regional trains

Depart frequently from Copenhagen Central Station to major neighbouring towns. Kystbanen (the Northern Line) runs between Copenhagen Airport and Helsingør/Elsinore 3-6 times/hour. Western line runs to Roskilde 3-6 times/hour. [www.dsb.dk](http://www.dsb.dk) InterCity trains Hourly services connect Copenhagen with Odense/Funen and the main towns of Jutland. Seat reservation is not required, but recommended. [www.dsb.dk](http://www.dsb.dk)

## Children

One adult can bring along two children under the age of 12 free, on several of the tickets. Children under the age of 16, can buy tickets. (half price), and bring along one child, under the age of 12 free.

## Taxi

In Copenhagen you can hail a taxi on the street or pick one up at taxi stands throughout the city. You can also book a taxi by phone (increased basic fare!). A vacant taxi carries the sign "FRI" (free) in the window.

## GOING TO SWEDEN

Scandlines - car & passenger ferry Helsingør-Helsingborg. 2-3 departures / hour. Duration: 20 min. Tel. +45 3315 1515 or [www.scandlines.dk](http://www.scandlines.dk)

## Öresundsbron – by train and car

The Öresund Bridge linking Denmark and Sweden is a toll bridge. It is open to motorists and trains. Bicycles are not allowed but you can bring them with you on the trains that cross the bridge between Copenhagen and Malmö every 20 minutes. [www.oresundsbron.dk](http://www.oresundsbron.dk)

## Transport to the cruise terminal

Copenhagen has four cruise terminals, Langelinie Quay, Nordre Toldbod, the Freeport (Frihavnen) and Ocean Quay (Oceankaj). The new cruise terminal Ocean Quay in Copenhagen's North Harbour, Nordhavn, was inaugurated in 2014 and is expected to welcome 60% of cruise calls in Copenhagen.

Bus 27 runs from Oceankaj to Østerport Station and further on to Nørreport Station (only when we have a cruise line)

Bus 26 is a regular route to Kongens Nytorv, Copenhagen Central Station, Østerport and Rådhuspladsen. During the season, the bus is also extended to Søndre Freeport Ferry Terminal and Langelinie Quay and Ocean Quay (Oceankaj).

You will need a two-zone ticket, which costs Dkr 24.

# PRACTICAL INFORMATION

## BANKS AND ATMS

Banks are generally open between 10:00 and 16:00 Mon-Fri (Thu until 18:00). Some exchange bureaux stay open until 20:00. You can withdraw Danish currency from all ATMs. Most ATMs and many stores accept international credit cards.

## BOX OFFICES

Tickets for most performances can be purchased online from: [www.ticketmaster.dk](http://www.ticketmaster.dk) or call: +45 70 15 65 65 Mon-Fri 10:00-17:00. **The Royal Danish Theatre:** [www.kglteater.dk](http://www.kglteater.dk) or call +45 33 69 69 69 Mon-Fri 9.30-16:00.

## DISABLED VISITORS

For information on disabled access and facilities visit [www.godadgang.dk](http://www.godadgang.dk)

## EMERGENCIES

For ambulance and fire services, call 112. For police, call 114. Emergency calls from public phone booths are free.

## FLIGHT INFORMATION

For arrivals, departures and flight tables: [www.cph.dk](http://www.cph.dk) or download the CPH Airport app.

## LOST CREDIT CARDS

**Dankort, Visa/Dankort og Visa Electron:** Phone: +45 44 89 29 29.  
**MasterCard og Visa:** Phone: +45 44 89 27 50.

## LOST PROPERTY

Metro: Phone: +45 70 15 16 15. [www.m.dk](http://www.m.dk).  
Trains and S-trains: Phone: +45 70 13 14 15. [www.dsb.dk](http://www.dsb.dk).  
Police: Phone: +45 38 74 88 22.  
Email: [kbh-hittegoods@politi.dk](mailto:kbh-hittegoods@politi.dk)

## MEDICAL CARE

Phone 1813. The hotline is staffed 24/7.

## EMERGENCY WARDS

*The following hospitals have 24-hour emergency wards:*

### Bispebjerg Hospital

Bispebjerg Bakke 23.

### Hvidovre Hospital

Kettegårds Allé 30 2650 Hvidovre.

### Herlev Hospital

Herlev Ringvej 75, 2730 Herlev.

### Nordsjællands Hospital

Dyrehavevej 29 3400 Hillerød.

Please note that emergency wards are generally only open to patients who have called 1813 in advance. Wait time must be expected. For emergency dental care call 1813 and ask for nearest emergency dental clinic.

## PHARMACIES

Pharmacies often follow regular shopping hours. Opposite the central station you find Steno Apotek, which is open 24/7. Address: Vesterbrogade 6C.

## SHOPPING HOURS

Shopping hours vary between Mon-Thu 10:00-18:00, Fri 10:00-20:00 and Sat 10:00-17:00. Department stores and some boutiques are open on Sundays. Supermarkets are open all days, often until 20:00/22:00. Corner stores are often open 24/7.

## SPEED LIMITS

50 kph/30mph in urban areas,  
80kph/50mph on major roads and  
130kph/80mph on motorways (or  
110kph/68mph on some stretches).

## TOURIST INFORMATION

Copenhagen Visitors Centre,  
Vesterbrogade 4. Phone: +45 70 22 24 42  
(Opposite the Central Station)  
[www.visitcopenhagen.dk](http://www.visitcopenhagen.dk)

## TRAVEL PLANNER

For information and travel planning with public transport in Denmark, visit [www.rejseplanen.dk](http://www.rejseplanen.dk) or download the Rejseplanen app.

# INDEX - MAP OF NORTH ZEALAND

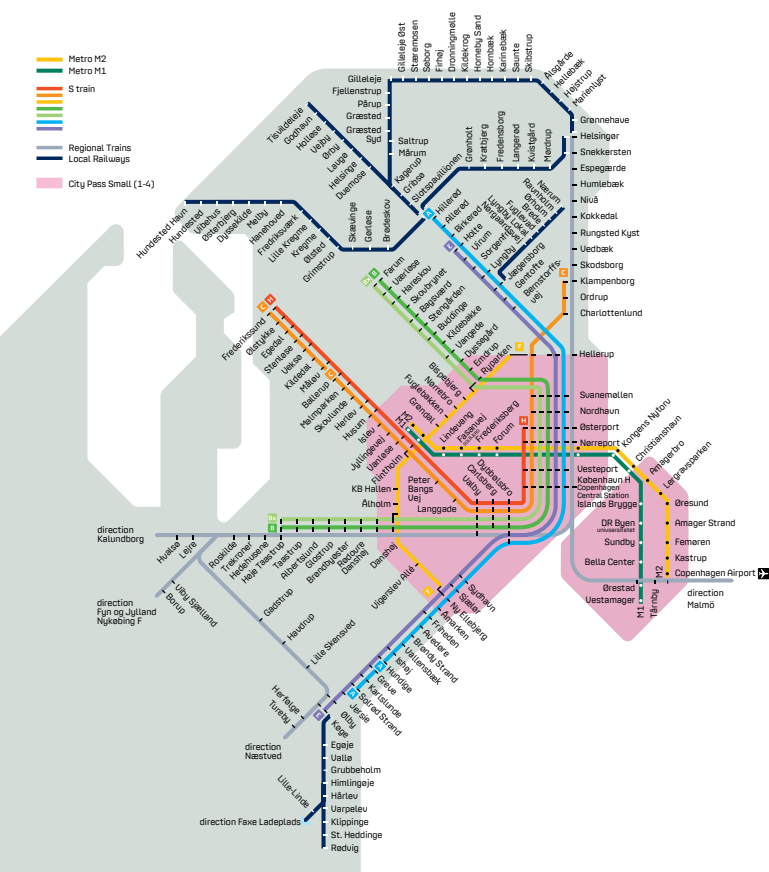
Annisø	C3	Kregme	C3
Arresø (lake)	C3	Kronborg	F2
Asserbo	B2	Kulhuse	AB3
Bella Centret	F7	Kvistgård	F3
Birkerød	E4	Lejre	B7-B8
Blovstrød	E4	Lille Værlose	E5
Brede	F5	Louisiana (art museum)	F3
Bregnerød	E5	Lyngby	F5
Charlottenlund	F6	Lynge	D4-D5
Copenhagen Airport	G7	Lynæs	A3
Dronningmølle	E1	Måløv	DE6
Dyrehaven		Mårum	D2
(deer park and forest)	F5	Nivå	F3
Elsinore (Helsingør)	FG2	Nordskoven (forest)	B4
Espergærde	F3	Nærum	F5
Esrum	E2	Nødebo	E3
Esrum Sø (lake)	E2-E3	Osted	B8
Farum	E5	Ringsted Outlet Village	A8
Frederiksborg Slot (castle)	DE3	Roskilde	C7
Frederikssund	C5	Roskilde Fjord	C6
Frederiksværk	BC3	Rungsted	F4
Furesø (lake)	E5	Rådvad	F5
Gl. Humlebæk Kro	F2	Rågeleje	C1
Ganløse	D5	Sjælsø (lake)	E4
Gentofte	F6	Skibby	B6
Gerlev	B5	Skodsborg	F5
Gilleleje	D1	Skovshoved	F5
Greve	D8	Skuldelev	B5
Gribskov (forest)	DE2-DE3	Skævinge	C4
Græsted	D2	Slangerup	CD4
Gurre	F2	Sletten	F3
Hedehusene	CD7	Smidstrup	D1
Hellebæk	F2	Snekkersten	F2
Hellerup	F6	Stenløse	D5
Helsingør	D2	Svigerslev	BC7
Helsingør (Elsinore)	FG2	Søborg	D1
Hillerød	DE3	Søllerød	F5
Holte	EF5	Tikøb	E2
Hornbæk	E1	Tisvilde	C2
Humlebæk	F3	Tisvildeleje (beach)	C2
Hundested	A3	Tisvilde Hegn (forest)	BC2
Hørsholm	F4	Tåstrup	D7
Ishøj	E7	Udsholt	CD1
Jyllinge	C6	Valby	F7
Jørnlunde	CD5	Vedbæk	F4
Karlebo	E4	Vejby	C2
Karlsunde	D8	Vikingskibsmuseet (Viking Ship Museum)	C7
Kastrup Lufthavn (Copenhagen Airport)	G7	Værlose	E5
Klampenborg	FG5	Ølstykke	C5
Kokkedal	F4	Ålgårde	F1





# METRO & TRAIN SYSTEM OF GREATER COPENHAGEN

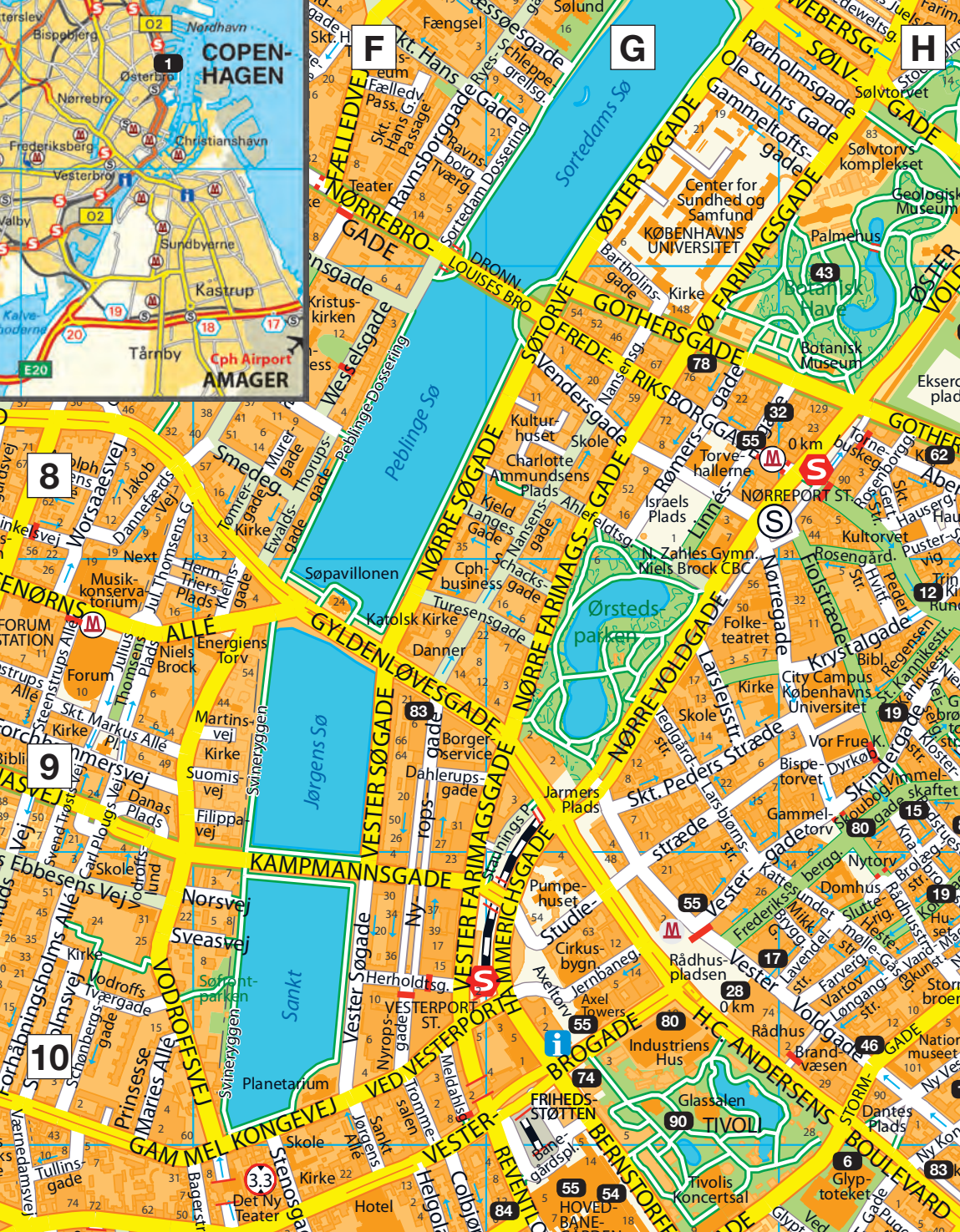
Monday - Friday. Weekends only line A, B C & F on the S-train system



## INDEX - MAP OF COPENHAGEN CITY

Adelgade	J8	Gammeltorv	H9
Admiralgade	J9-J10	Georg Brandes Plads	H7
Adolph Steens Alle	E8	Gernersgade	J7-K7
Ahlefeldtsgade	G8	Gothersgade	G8-J9
Amagertorv	H9	Grønnegade	J9
Amaliegade	K8-L7	Grønningen	K7
Amalienborg Slotsplads	K8	Gråbrødretorv	H9
Andreas Bjørns Gade	L10	Gåsegade	H10
Antonigade	J9	H.C. Andersens Boulevard	G10-H11
Asiatisk Plads	K10	Hammerensgade	K7
Asylgade	J9	Hammerichsgade	G9-G10
Axeltorv	G10	Haregade	J7-K7
Banegårdspladsen	G10-G11	Hausergade	H8
Bartholinsgade	G7-G8	Havnegade	K9-K10
Bertel Thorvaldsens Plads	H10	Heibergsgade	K9
Bispetorvet	H9	Herholdtsgade	F10
Bodenhoffs Plads	L9-L10	Herluf Trolles Gade	K9
Boldhusgade	J9-J10	Hestemøllestræde	H10
Borgergade	J8	Hindegade	J8-K8
Bornholmshgade	K7	Hjertensfyrdsgade	J7
Bredgade	K7-K8	Holbergsgade	K9
Bremerholm	J9-J10	Holmens Kanal	J9-J10
Brobergsgade	L10	Hovedvagtsgade	J9
Brolæggerstræde	H9-H10	Hyskenstræde	H9
Bryghusgade	J11	Højbro Plads	J9
Burmeistersgade	L10	Inderhavnsbroen	K9-L9
Børsen	J10	Israels Plads	G8
Børsgade	J10	Jakob Danneferds Vej	E8
Bådsmændsstræde	K10-L10	Jarmers Plads	G9
Carl Plougs Vej	E9-E10	Jens Kofods Gade	K7
Charlotte Amundsens Plads	G8	Jernbanegade	G10
Christiania	L10	Julius Thomsens Gade	E8-E9
Christian IX's Gade	J8-J9	Kattesundet	G10-H10
Christiansborg Slot	J10	Kjeld Langes Gade	F8-G8
Christianshavns Kanal	K10	Klareboderne	H9
Christianshavns Torv	K11	Kleinsgade	F8-F9
Citypassagen	J9	Klerkegade	J7-J8
Cort Adelers Gade	K9	Klosterstræde	H9
Dahlerupsgade	F9	Knabrostræde	H9-H10
Danas Plads	E9	Knippelsbrogade	K10
Dantes Plads	H10	Kompagnistræde	H9-H10
Dronningens Tværgade	J8-K8	Kongens Nytorv	J9
Dronning Louises Bro	F7-G8	Kristen Bernikows Gade	J9
Dybssgade	J9	Krokodillegade	J7-K7
Dyrkøb	H9	Kronprinsensgade	J9
Elsdyrsgade	J7-K7	Kronprinsessegade	J7-J8
Energien Torv	F9	Krusemyntegade	J7
Esplanaden	K7-L7	Krystalgade	H9
Ewaldsgade	F8-F9	Krøyers Plads	K9-L10
Farvergade	H10	Kultorget	H8
Filippavej	F9	Kvæsthusgade	K9
Fiolstræde	H8-H9	Købmagergade	H9-J9
Fortunstræde	J9	Laksegade	J9-J10
Fredericiagade	J7-K8	Landemærket	H8-H9
Frederiksberggade	G10-H10	Landgreven	J8
Frederiksborggade	G8	Larsbjørnsstræde	G9
Frederiksholms Kanal	H10	Larsens Plads	L8
Fælledvej	F7	Larslejsstræde	G9
Fælledvejens Passage	F7	Lavendelstræde	G10-H10
Gammel Mønt	J9	Lille Kannikestræde	H9
Gammel Strand	H9-H10	Lille Kirkestræde	J9
Gammeltorftsgade	G7-H7	Lille Kongensgade	J9









Map bullet

Harbour Bus

Metro

Cityringen Metro (Åbner sommer 2019)



TASTE THE BEST OF THE MEDITERRANEAN

# RIZ RAZ

*Modern Mediterranean*

GREEN BUFFET, STEAKS & BURGERS, SEAFOOD  
ORGANIC BEER & COCKTAILS

LET'S MEAT HERE!



ST.KANNIKESTRÆDE 19  
KOMPAGNISTRÆDE 20  
COPENHAGEN

Enjoy our beautiful **COURTYARD**

11.30 - 00.00

Map 19

[rizraz.dk](http://rizraz.dk)



## RESTAURANT MAVEN

A Nordic bistro placed inside the Nikolaj Church



Map 70

Nikolaj Plads 10 · Tlf. 32 20 11 00 · [www.restaurantmaven.dk](http://www.restaurantmaven.dk)

## KROGS FISH RESTAURANT

Copenhagen's finest



We are looking forward to welcoming everyone with an appetite for the best fresh fish in town – served in our unique surroundings

Gammel Strand 38 · Tel +45 33 15 89 15 · [www.krogs.dk](http://www.krogs.dk)

Map 68



# THE SWISS HOUSE OF WATCHES AND FINE JEWELLERY



 <b>ROLEX</b>	 <b>CARL F. BUCHERER</b> LUCERNE 1888	<b>BUCHERER</b> FINE JEWELLERY	 <b>BAUME &amp; MERCIER</b> MAISON D'HORLOGERIE GENEVE 1830
<i>Cartier</i>	<i>Chopard</i>	<b>IWC</b> SCHAFFHAUSEN	 <b>JAEGER-LECOULTRE</b>
<b>LONGINES</b>	 <b>MONTBLANC</b>	 <b>OMEGA</b>	 <b>TUDOR</b>
 <b>VACHERON CONSTANTIN</b> GENEVE, DEPUIS 1755	 <b>GEORG JENSEN</b> COPENHAGEN	 <b>OLE LUNDGAARD</b> COPENHAGEN	and many more